

UBCM 2023

BALANCING ~~A~~CT



A group of people in a meeting, overlaid with a teal and purple gradient. The image shows several individuals, including a woman in a red top and a man in a blue shirt, engaged in conversation. The background is a blurred office setting with a computer monitor and a table with a water bottle.

BC Association of Community Health Centres

**Presentation to the Union of BC
Municipalities**

September 19, 2023

Agenda

- Community Health Centre (CHC) Overview
- BC Association of Community Health Centres (BCACHC) Overview

Valerie St. John, Executive Director, BCACHC

BCACHC acknowledges that we work to advance health in a colonial context and we do so on the unceded lands of First Nations and Indigenous Communities. We recognize the harms of colonialism and commit to deepening our understanding and supporting healthy relationships.



Community Health Centre Overview

5 criteria are used to define a CHC in B.C. and are included in Ministry of Health policy:

- Provides team based, interdisciplinary primary health care
- Integrates services in primary care, health promotion, and community well being
- Is community governed
- Actively addresses the social determinants of health
- Demonstrates commitment to health equity and social justice

What is a CHC?



- Have 50 years of history in BC (REACH, CoolAid, Mid-Main)
- Diverse mix of urban and rural settings serving range of populations – specialized or geographic or both
- Heterogeneous service models with diverse funding and operations
- Community governed – for the community by the community
- Offer a broad range of programming for health promotion and the social determinants of health
- Over 150,000 people access a CHC every year (2020)

CHCs in B.C.





BCACHC Member CHCs by Health Region (2023) (partial list)

- **Island Health:**
Cool Aid, AVI, Island Sexual Health, **Gabriola, Galiano, Pender, Salt Spring**, Luther Court, Westshore, Victoria Health Co-Op, **Pender Island, Sooke, Cowichan (e), Campbell River (e)**
- **Fraser Health:**
Umbrella Multi-Cultural Health Co-Op, Roots, E. Fry , SHARE (e), The Alec (e)
- **Vancouver Coastal Health**
Atira, Catherine White Holman, Reach, Rise, **Pender Harbour, Bowen Island (e)**, Mid-Main
- **Northern Health:**
Central Interior Native Health, **Lower Post (e)**
- **Interior Health:**
STEPS, **Sun Peaks**, Lake Country, Healthy Essentials, Community First, **Sicamous, North Shuswap, South Shuswap, Kootenay Boundary (Prima) (e), Lower Columbia(e)**



Cool Aid – Victoria

- Primary care, housing, addictions, dental care, outreach
- GP, NP, Counsellors, Dentist, Pharmacist, Social Worker

Umbrella Multi-Cultural Co-Op

- Primary care, health promotion, outreach, refugee supports, pediatric care, care for migrant farm workers
- GP, NP, Social Worker, Physio, Outreach

Galiano Island

- Primary care, mental health, MHSU, Dental care, Food, Lab, Home support
- GP, NP, RN, Social Worker, OT, Speech, OT, Dietician, Telehealth

CHC Service Models





BC Association of Community Health Centres (BCACHC)

Our History & Our Role:

- Founded in 2017
- Represents 40+ CHC/community members
- Supports members in all stages of development
- Provides education, research, evaluation, governance, engagement and advocacy supports
- www.bcachc.org





BCACHC (continued)

Key Activities of BCACHC

Member Support:

- How to develop a CHC, how to govern, how to engage in community
- Operations supports
- CHC evaluation & research
- Networking
- Grants \$\$
- Relationships with partner organizations and program ministries

Advocacy:

- Sustainable funding model
- CHC Inclusion in health and wellness planning; PCN relationships; decision making; integrated care delivery



Team-Based Care



Philosophy of 'any door is the right door' for patient access to care.

Teams enjoy working in this model with the patient at the centre.

Patients appreciate multi-disciplinary approaches.





Our Discussion Today

Panel Discussion

Sooke Region Community Health Network (emerging CHC)

- Mary Dunn, President
- Mayor Maja Tait

Health Essentials Clinic (in operation for 10 years)

- Christina Camilleri, Founder
- Mayor Blair Ireland



Valerie St. John
Executive Director
vstjohn@bcachc.org
250-216-1691

Catherine Aw
Operations Director
caw@bcachc.org

Come see us at Booth
#319 _ UBCM Trade
Show





Thank you

www.bcachc.org

An aerial photograph of a coastal highway. The road curves along a steep, forested cliffside. A small white boat is visible in the water near the road. The water is a deep blue-green, and the sky is a pale, hazy blue. The overall scene is serene and scenic.

UBCM 2023

BALANCING ~~A~~CT



**SOOKE REGION COMMUNITIES
HEALTH NETWORK**

SRCHN

CHC/UPCC Model

UBCM Convention, Vancouver, September 18-22, 2023

Sooke Region Communities Health Network



- We are a non-profit with charitable status that has been in existence since 2001.
- Our board is made up of representatives from the communities we serve and organizations that support our mission.
- Catchment Area:
 - Beecher Bay, East Sooke, T'Sou-ke, Sooke, Otter Point, Shirley, Jordan River, Pacheedaht, Port Renfrew
- Current programs:
 - Senior's non-medical support and activities, Volunteer and Resources Centre, Seasonal Tax Clinic, Women's Cancer Group, Community Consultations

The Genesis of the Sooke CHC/UPCC



- Since our inception, the need for more community-based health services that work in a multidisciplinary model was evident and wanted by the communities we serve.
- As members of the Sooke Primary Health Working Group, the model of CHCs has been explored for more than 10 years.
- In 2022, all the pieces coalesced and the Sooke Health Care Committee and the PCN supported SRCHN to put in the proposal and become the governing organization.
- SRCHN and the local medical clinic started to plan how we could transition the clinic into the CHC/UPCC and expand it to meet the needs of our full catchment.

Our Vision and Experience



- 2 of our board members had experience with the Ontario CHC model, one as a Registered Nurse and Clinical Manager, the other as a board president.
- This experience influenced our commitment to have a CHC that provided the full scope of service, including urgent care.
- Given that we often experience road closures that cut off our access to hospital and other medical services, it is important to us that we serve the entire region.
- Our CHC/UPCC proposal was approved in March 2023.

Hybrid CHC/UPCC at Work



SOOKE REGION COMMUNITIES
HEALTH NETWORK
SRCHN

Funding

- Ministry of Health funds all staff salaries, and operating costs.

Governance

- Not for profit, charity
 - Community Based Board of Directors
 - Governance - ED & managers
 - HR functions
- One access point for clients**

Space

- 15,000 sq. feet
- Some shared space with co-located services
- Space for visiting specialists

Health Care

- Doctors, NPs, nurses, etc.
- Primary longitudinal care
- Urgent Care
- Indigenous Cultural Liaison

Health Promotion

- Mental Health/Substance Use
- Social Worker

Co-located Services

- Imaging
- Lab services
- Ambulance
- 15,000 sq. feet

Current Status



- Working with the MoH and VIHA to finalize:
 - Service Model refinement
 - Decision on funding for lease hold improvements or full build
- Working with Indigenous leaders to ensure:
 - Complimentary services
- To date all work has been done by 3 board volunteers in collaboration with BCACHC, who provided a consultant to assist with the proposal.
- We have recently received funding from the MoH to hire a project director and are in the recruitment phase.

Challenges



- Sharing of client information across service providers such as IH and FNHA to allow for seamless service.
- Compensation model for physicians and NPs.
- Nailing down numbers and budgets when we are 2 years out:
 - Salaries, staff being integrated from the local clinic, lease costs.
- Long wait for a decision from the MoH on paying for the full build or lease hold improvements only.
 - This decision influences impacts many aspects of moving forward, including getting guarantees from co-located services and starting construction.
- To meet the Ministry's expectation of opening spring 2025.

An aerial photograph of a coastal highway, likely the Sea-to-Sky Highway in British Columbia, Canada. The road curves along a steep, forested cliffside. A small white boat is visible in the water near the shore. The water is a deep blue-green, and the sky is a clear, light blue. The overall scene is bright and scenic.

UBCM 2023

BALANCING ~~A~~CT

Healthy ESSENTIALS CLINIC

*We acknowledge that we live and work
within the ancestral, traditional
and unceded territory of the Syilx
Nation.*

HEC is for people struggling with physical and mental health issues
who need quality integrated care from multiple practitioners.

We are dedicated to providing timely access to individuals and their family.

Our structured programs are personalized for the mild, moderate or acute need.

The Need

Why *H*EC is important for our communities

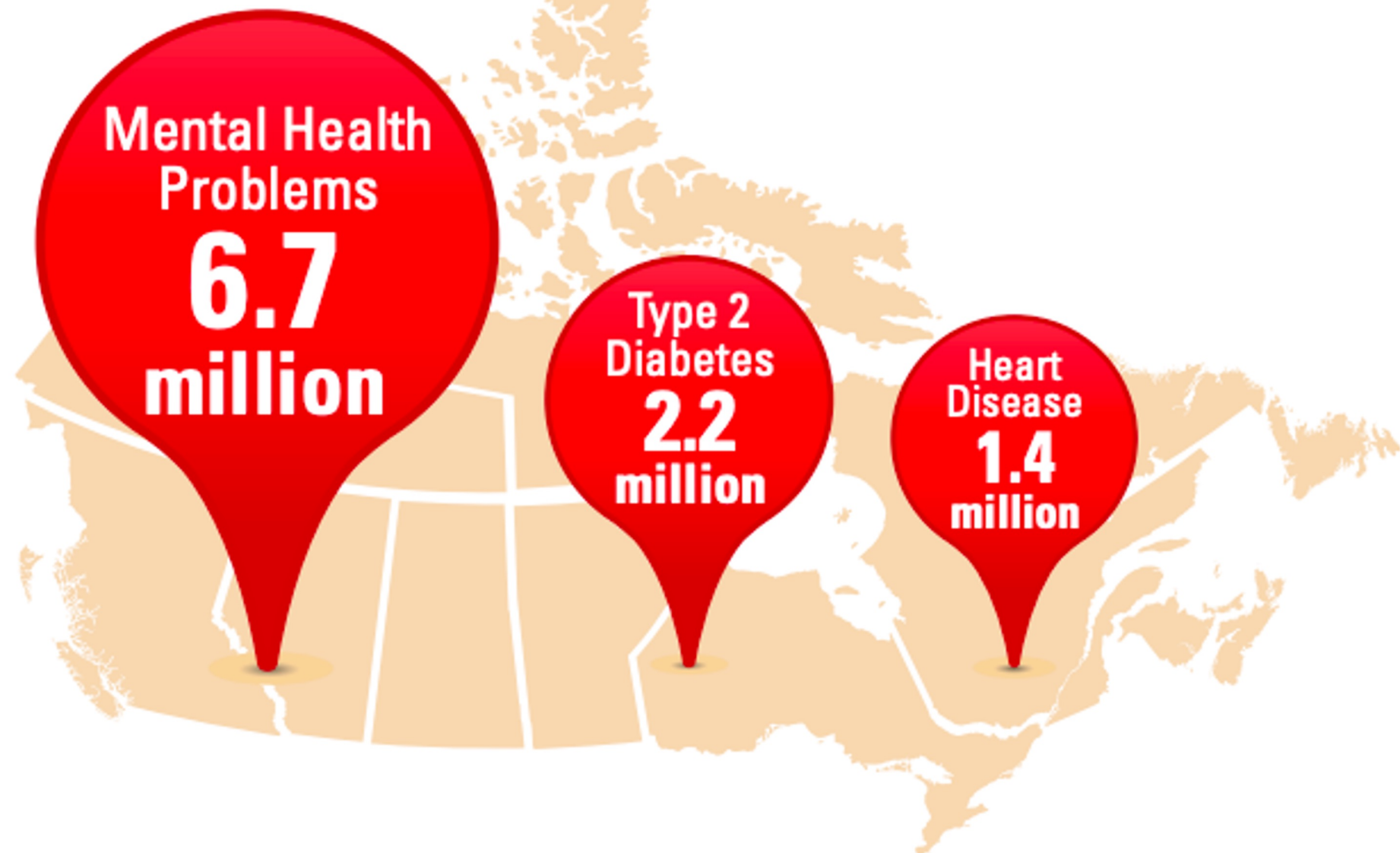




Mental Health
Commission
of Canada

Commission de
la santé mentale
du Canada

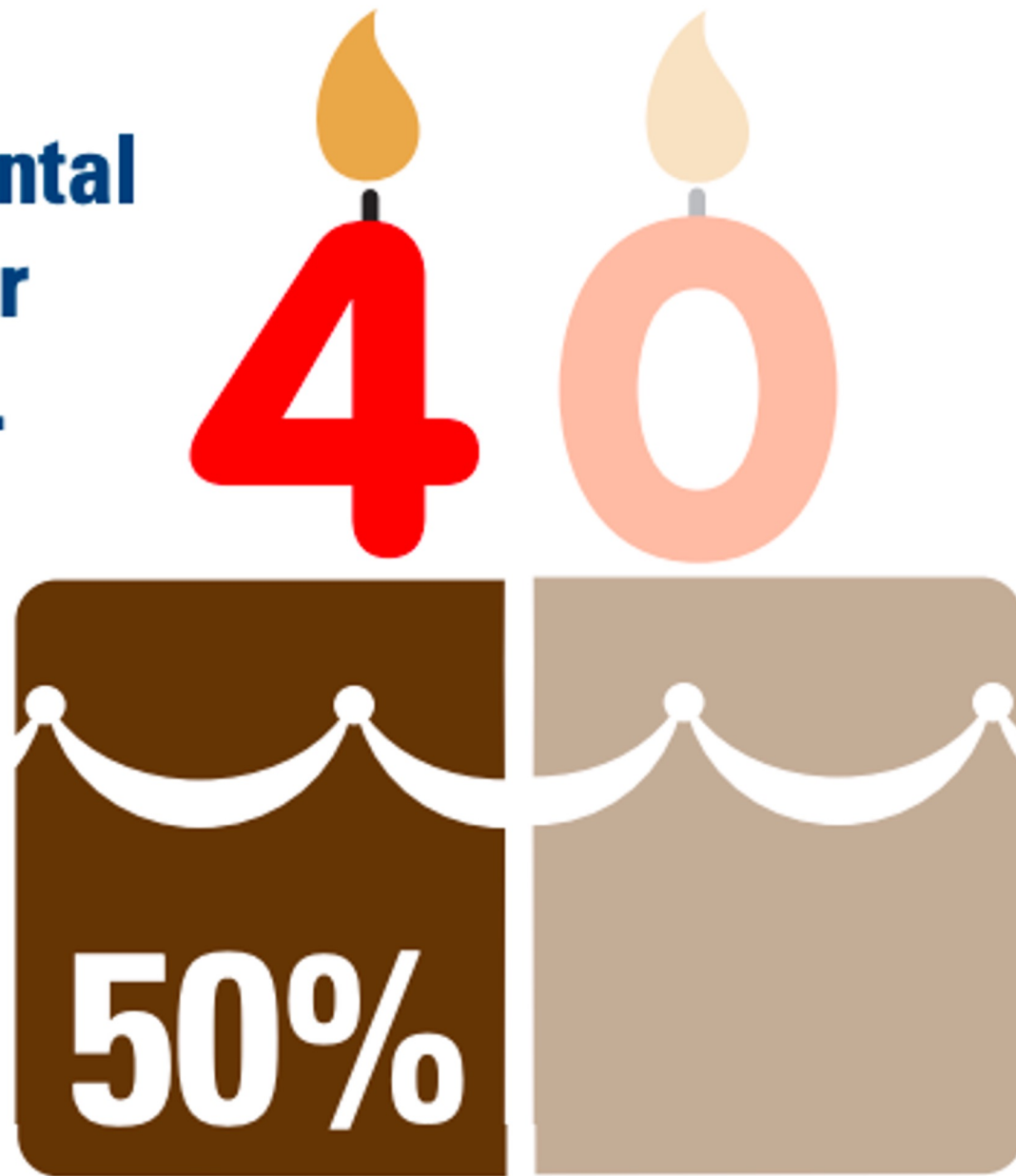
Canadians are living with:



One in five Canadians currently live with a mental illness.



People who will experience a mental health problem or illness by age 40.



Annual productivity impact of mental illness in the workplace

2041

\$16
billion

2011

\$6.4
billion

The present value of the cumulative 30-year productivity impact is expected to be **\$198 billion.**



Reducing

the number of people experiencing a new mental illness in a given year

by 10%

would save the economy

\$4 billion per year.

Source: *Making the Case for Investing in Mental Health*, Mental Health Commission of Canada.



23% **75%** **70%** **\$200B**

CDNS aged 9-19
living with mental
illness

of those don't receive
proper treatment

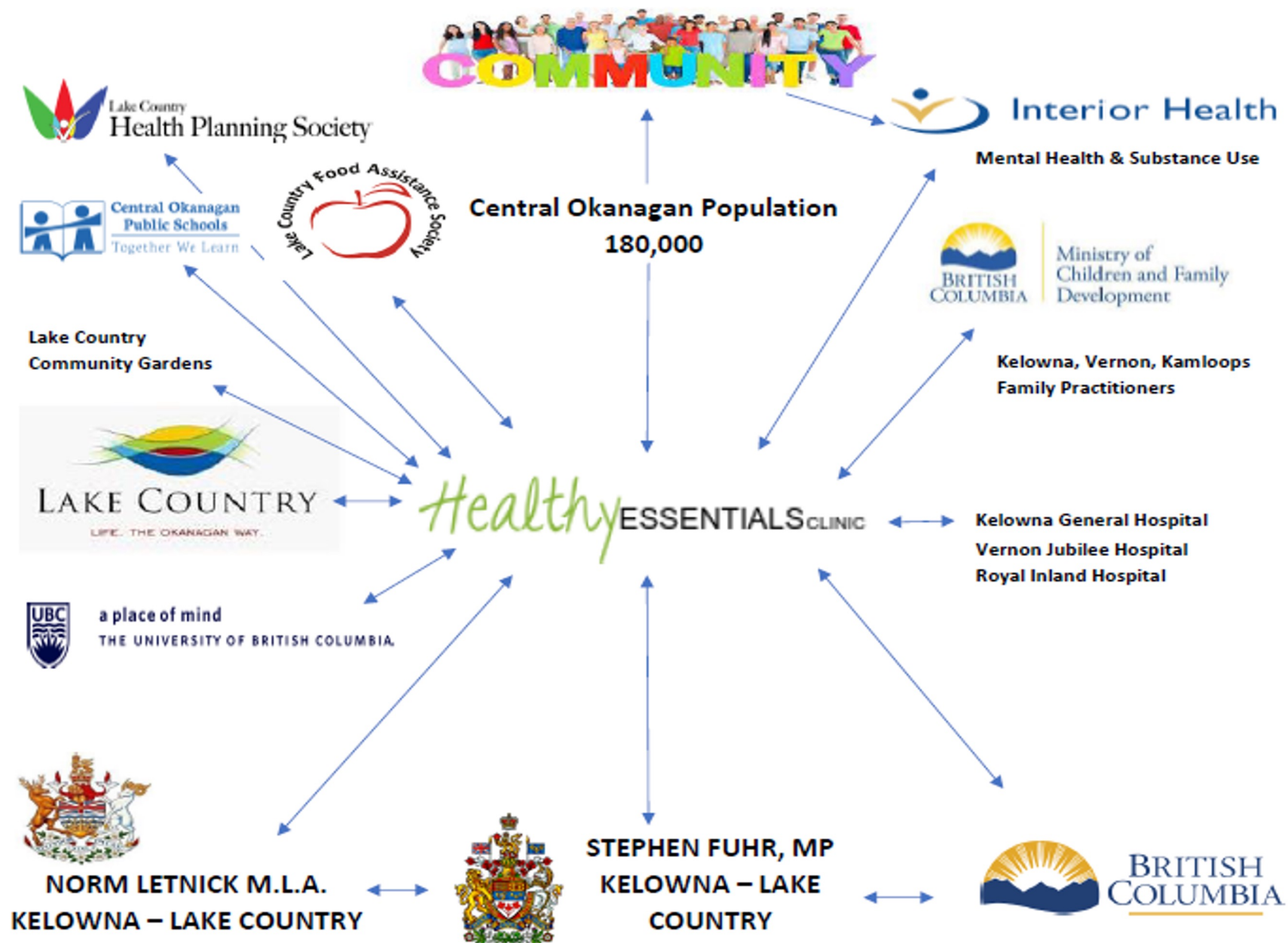
of mental health
problems emerge in
childhood

Burden of childhood
onset mental illness

START
CHANGE

The Story





Our mission: to de-stigmatize mental health in our community by offering primary healthcare and specialized services in one location to ease the burden of care for the individual, family and practitioner.



Healthy ESSENTIALS CLINIC

healthy heart, *healthy* mind, *healthy* essentials

Information: admin@healthyessentialsclinic.com

224-3121 Hill Rd Lake Country BC

www.healthyessentialsclinic.ca

An Integrative Service

**HEC Clinic
Primary Care ++ Model**

HEC Practitioners

Physicians

Psychiatrists

Counsellors

Social Workers

Family Therapists

Play Therapist

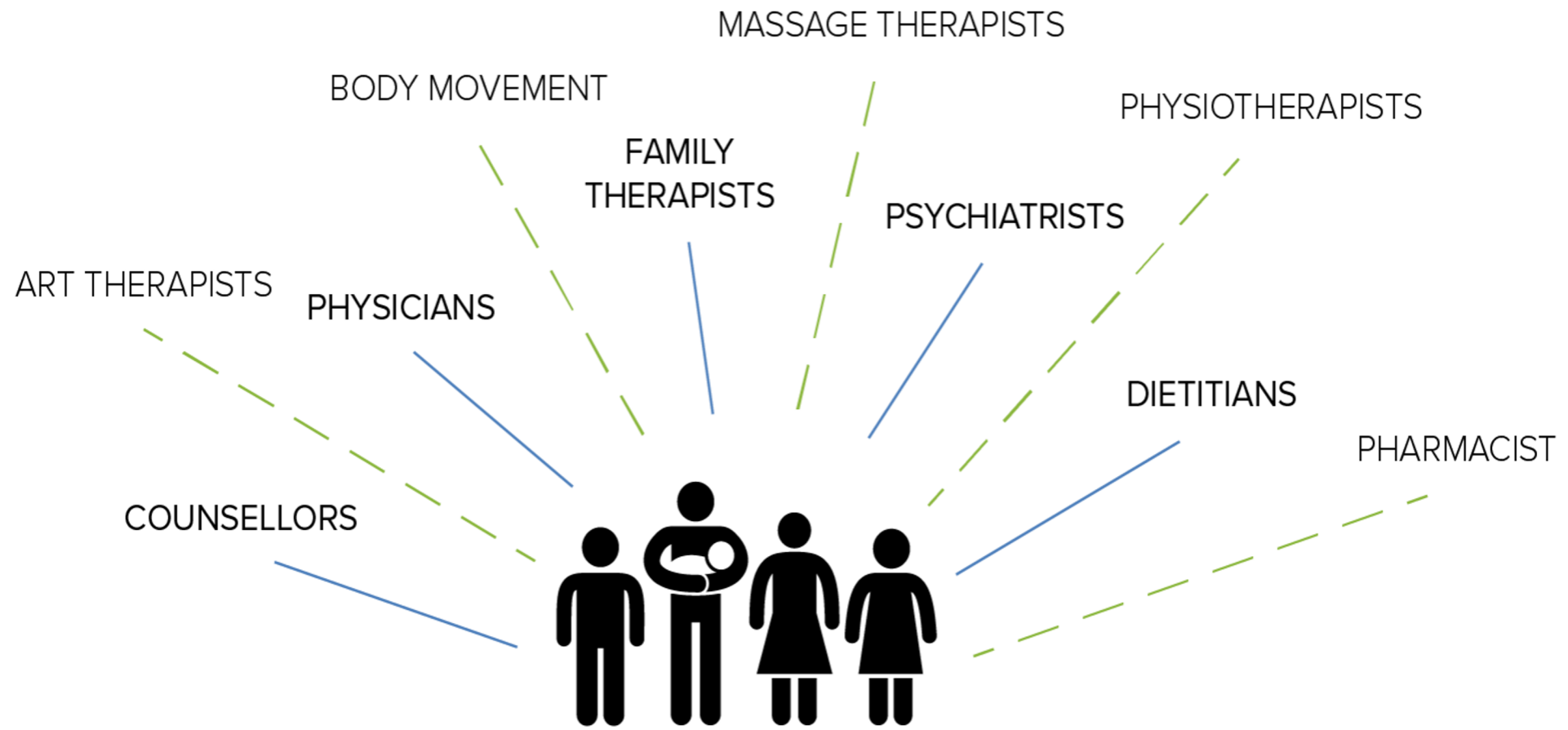
Physiotherapists

Occupational Therapists

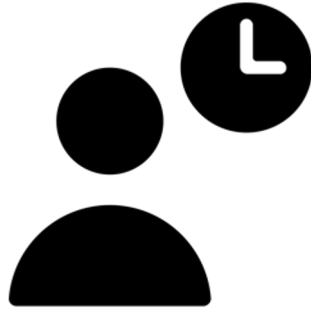
Dietitians

Body Movement

Pharmacist



Improved Outcomes



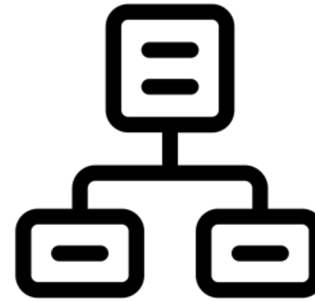
Created by Creative Stall
from Noun Project

Timely access



Created by Aneeqe Ahmed
from Noun Project

**Interdisciplinary
Multi-modality**



Created by Gregor Cresnar
from Noun Project

Structured programs



Created by Gan Khoon Lay
from Noun Project

Shared burden of care

The Challenge

Navigating systemic barriers

Lessons Learned



Reflections

- pioneering is not easy
- stay focused on your why
- mis-understandings and mental models
- DSRP Cabrera and Cabrera
- need for clear communication and documentation
- keep things simple

The Leadership: passion and perseverance



Christina Camilleri

Founder & Director

BASc RD RCC MAL CHE

- Certified Health Executive (CHE) CCHL
- 30 years in health and wellness
- Social Entrepreneur
- Specializing in healthcare strategy, business consulting, nutrition, mental health, substance use, learning difficulties, autism, ADHD, concussion recovery, person and family therapy

LEADS

- build and maintain trust with your team
- build strong relationships
- be courageous
- take risks
- recognize your strengths and share them
- recognize your areas for growth-blind spots
- stay informed
- perspective taking- reflection
- face tough situations

Finding Solutions

- shared values
- shared vision
- shared purpose
- shared learning
- practice collaboration-collaborative mindset
- be intentional towards building culture
- care for clinicians and care for clients
- be humble
- practice self-compassion and self-empathy

The Model

How to make **HEC** sustainable and impactful





Extended Health Program



COMMUNITY FOUNDATION north okanagan



UBCM 2023

BALANCING ~~A~~CT



Modernized Emergency Management Legislation and Local Governments

Councillor Jen Ford, UBCM President
September 19, 2023
Mid-Sized Communities Forum



Background

- The current *Emergency Program Act* has not seen meaningful change since 1993.
- British Columbia is facing many new challenges (e.g., floods, wildfires, extreme heat).
- Decision to modernize how we address emergency management.

Timeline

B.C. Flood & Wildfire Review (2018)

Emergency Program Act Review (2019 - 2022)

Introduction of New Legislation (2023)

Phased Implementation & Development of Regulations (2023 - 2024)

Key Principles

- The United Nations Declaration on the Rights of Indigenous Peoples (UNDRIP) and B.C.'s *Declaration on the Rights of Indigenous Peoples Act* (DRIPA).
- The Sendai Framework for Disaster Risk Reduction.
- Focus on all four phases of emergency management.

Five New or Enhanced Duties

Thorough Risk Assessments

**Comprehensive
Emergency
Management
Plans**

**Business
Continuity Plans**

**Consultation &
Cooperation**

**Reporting
Requirements**

Other Provisions

- Longer state of local emergency
- Updated definition of “emergency”
- Recovery period
- Agreements
- Minister’s authority to direct
- Local response and recovery powers
- Five year review

Primary LG Concerns

Funding

Capacity

UBCM Advocacy

- Submission in response to Province's 2019 report.
- Dedicated working groups and Executive committees.
- Endorsed resolutions.
- Meetings with provincial Ministers and MLAs.
- 2021 report, *Ensuring Local Government Financial Resiliency*, and Local Government Financial Review Working Group.

Next Steps

- Legislation to be introduced this fall.
 - Local governments encouraged to review the Province's technical paper.
- Phased implementation of certain provisions.
- Development of regulations.
 - Provincial policy session – *Modernizing Emergency Management Regulations @ 3:15 p.m.*
- Ongoing advocacy.



UBCM 2023

BALANCING ~~A~~CT



DMAF

DISASTER MITIGATION AND ADAPTION FUND

[INFRASTRUCTURE.GC.CA](https://www.infrastructure.gc.ca)



DMAF

DISASTER MITIGATION AND ADAPTION FUND

[INFRASTRUCTURE.GC.CA](https://www.infrastructure.gc.ca)



DFAA

DISASTER FINANCIAL ASSISTANCE ARRANGEMENTS

PUBLICSAFETY.GC.CA



DFAA

DISASTER FINANCIAL ASSISTANCE ARRANGEMENTS

PUBLICSAFETY.GC.CA



DFA
DISASTER FINANCIAL ASSISTANCE
FOR COMMUNITIES



DFA

DISASTER FINANCIAL ASSISTANCE FOR COMMUNITIES

C-LAP PROGRAM
BUY-OUTS

405,059 SQ METRES

MERRITT.CA/FLOOD



UBCM 2023

BALANCING ~~A~~CT

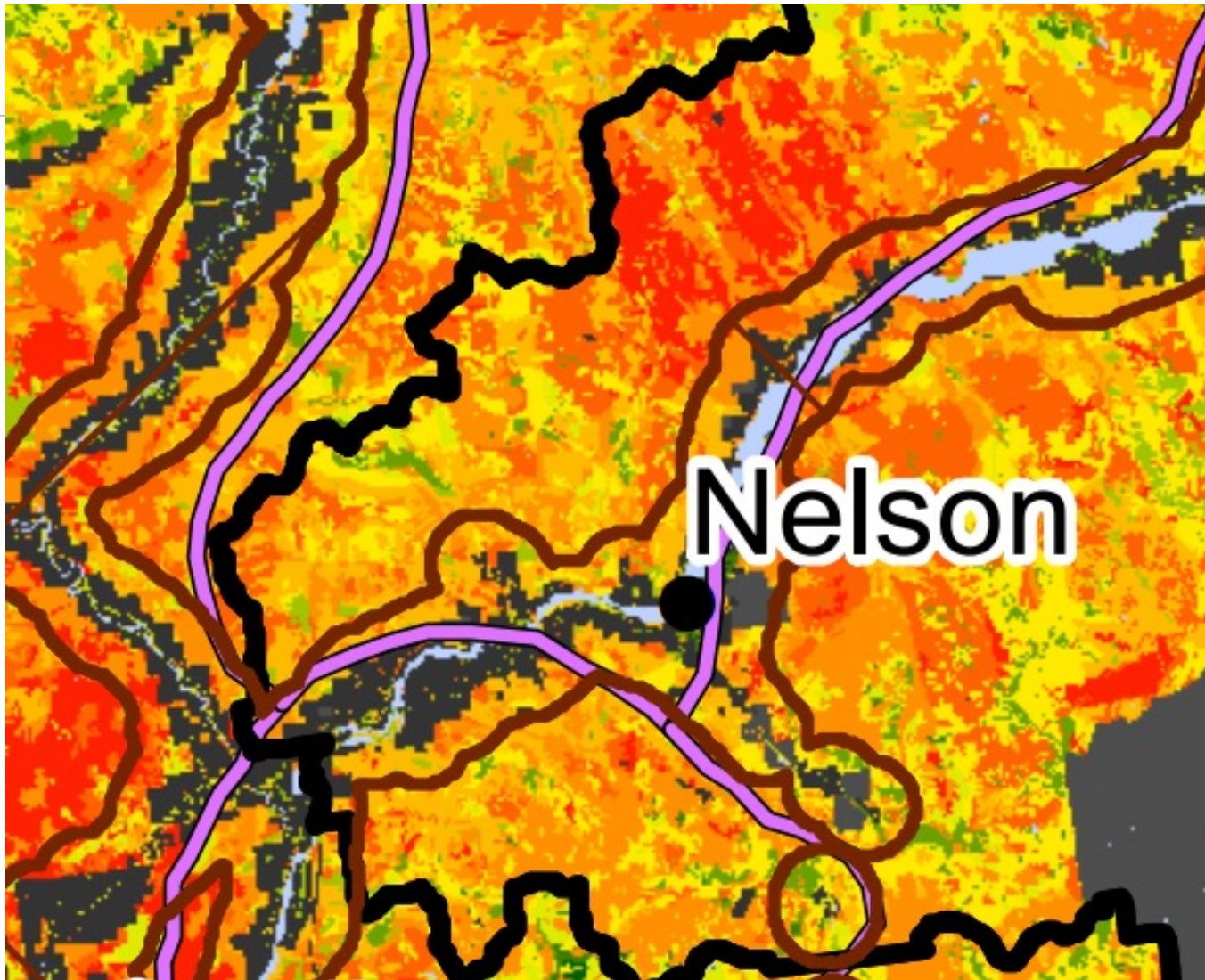
3 LEARNINGS

NELSON & AREA WILDFIRE RISK REDUCTION PARTNERSHIP

CHRIS JOHNSON

CJOHNSON@NELSON.CA

SOME HISTORY



2021 Provincial Strategic Threat Analysis
BC Wildfire Service

Fire Threat and Wildland Urban Interface Area

2021 Fire Threat Rating

- No Data (Private Land)
- No Data (Private Managed Forest Land)
- Water
- No Threat
- 1 - Low
- 2 - Low
- 3 - Low
- 4 - Moderate
- 5 - Moderate
- 6 - Moderate
- 7 - High
- 8 - High
- 9 - Extreme
- 10 - Extreme

2020 Wildland Urban Interface

- 2 km Interface Buffer
- ≥ 6 Structures/km²

Base Data

- Fire Centres
- Fire Zones
- Highway

LESSON #1 – The Power of Collaboration



LESSON #2 – The Power of Commitment



LESSON #3 – The Power of People



END



UBCM 2023

BALANCING ~~A~~CT



Danyta Welch

Archway for Domestic Peace

In appreciation of our speakers today and with thanks for your contribution, UBCM has made a donation to the Archway Society for Domestic Peace. The Archway Society provides a wide range of supportive services for survivors of domestic and sexual violence. Services include; safe shelter, counselling, child and youth advocacy, outreach services, and collaborative community projects.