

# A Land Back Story

LEQ'Á:MEL  
MATHEXWI  
SEMÁ:TH SOCIETY  
& City of Mission



# A Land Back Story

## Fostering Relationships with Local Government

- First Nations Unity & Perseverance
- Partnership
- Economic Development

Bonus: A deepening relationship leading to a brighter future for all





# VISION

---



---

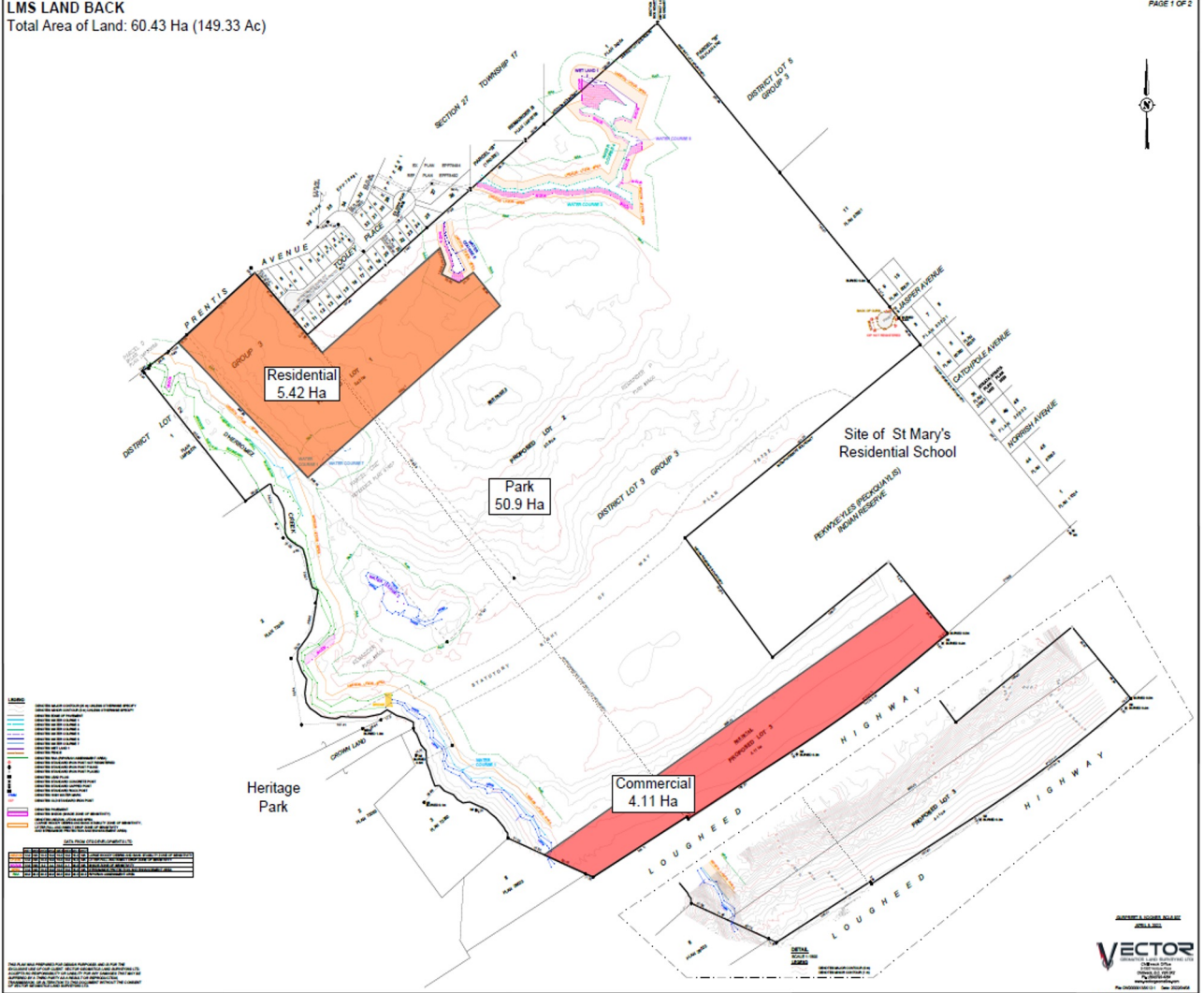
Return lands to LMS communities













# LMS Society Opportunity

## Land Back

- 60.4 ha (149.25 ac) of land back

## Development

- 9.5 acres of Residential (Townhouse)/Commercial development

## Cultural/Historical Significance

- First Nation control and management





# City of Mission Opportunity

## Certainty

- LMS Society

## Learning Opportunity

- Truth

## Legacy

- Forward Approach





# Opportunities Together...

## Emerging Partnership Possibilities

- Development
- Shared Parkland



99 Year Lease to the City of Mission



Joint LMS-Mission Park Management



Commitment to Maintain Public Use Space



Educational Signage



Cultural Events



# Í:XEL SQ'EQ'Ó AGREEMENT

(ee-hul skuhkah)


*together we paddle*



LEQ'Á:MEL  
MATHEXWI  
SEMÁ:TH SOCIETY  
& City of Mission







Being an ally means taking an active role to do whatever is within your power to ensure all individuals are treated equitably.



# SIGNING CEREMONY



July 2021





**Í:XEL SQ'EQ'Ó** (ee-hul skuhkah)  
*together we paddle*

## Key Take-Aways

- Patience
- Relationships
- Commonalities
- Political Will





Empathy and gratitude  
are a measure of  
a relationship's value.



A photograph of two people standing in a field of tall, dry grasses. The scene is misty and has a blueish tint. The people are seen from behind, looking towards a line of bare trees in the distance. The overall mood is quiet and contemplative.

**QUESTIONS  
AND DISCUSSION**