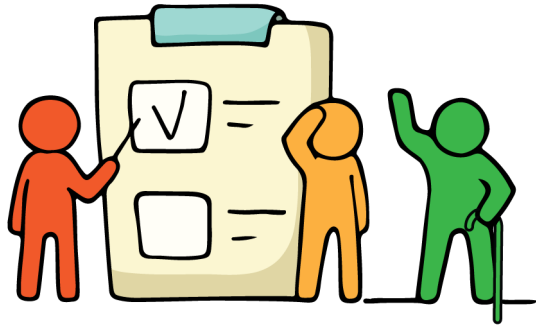




# Accessibility in the District of X



## Census Questions

- Does anyone in your household have difficulties with their daily activities, or have activities which are reduced because of a long-term physical, mental or other health condition?*

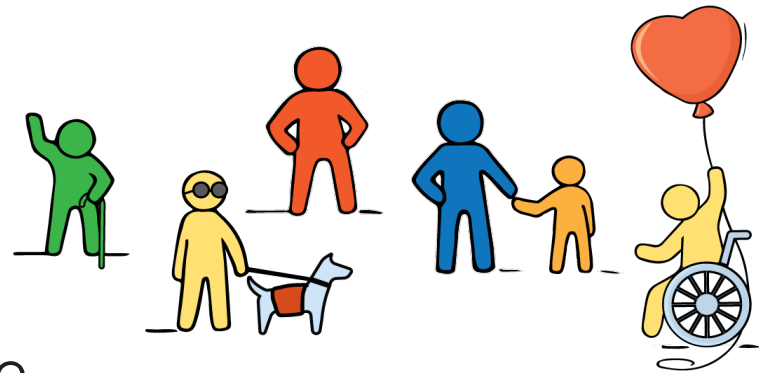
This question, is intended to identify people who are likely to have a disability for a follow-up survey—**the Canadian Disability Survey** and does not itself provide an estimate of disability in Canada.



# Definition of Frequency & Type

Only difficulties or long-term conditions that have lasted or are expected to last for **six months or more** should be considered.

People can also have episodic disabilities and this is reflected in the Census by people that report as *“Often and Sometimes have a limitation.”*

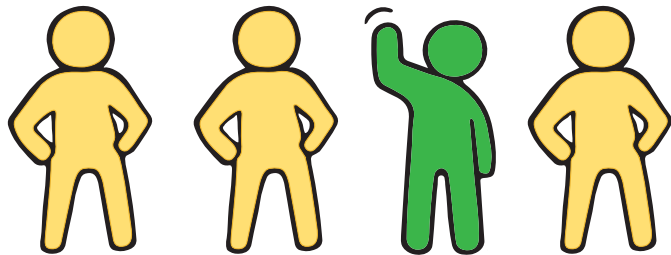


# Population with Health and Activity Limitations (HALs)

In 2016, **X in 4 individuals** living in the District of X reported that they experienced a health and activity limitation that affected their ability to participate in activities of daily living. This translates into XX,XXX individuals out of a total population of XX,XXX individuals. It is anticipated that 2021 data will be available later this year.

	Total Population	Total with HALs	% of the Population
British Columbia	X,XXX,XXX	X,XXX,XXX	XX.X%
Metro Vancouver	X,XXX,XXX	XXX,XXX	XX.X%
X	XX,XXX	XX,XXX	XX.X%

Census Data, 2016

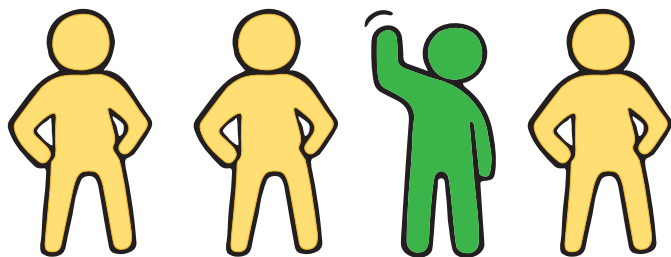




# Population with Health and Activity Limitations (HALs)

	Always	Often	Sometimes	Total with HALs
British Columbia	XXX,XXX	XXX,XXX	XXX,XXX	X,XXX,XXX
Metro Vancouver	XXX,XXX	XXX,XXX	XXX,XXX	XXX,XXX
X	X,XXX	X,XXX	X,XXX	XX,XXX

Census Data, XXXX



# Types of Activity Limitations

Activity Limitations	Always	Often	Sometimes	Total with HALs
A) Seeing / Low Vision	X,XXX	XXX	X,XXX	X,XXX
B) Hearing	XXX	XXX	X,XXX	X,XXX
C) Physical	X,XXX	XXX	X,XXX	X,XXX
D) Cognitive	X,XXX	XXX	X,XXX	X,XXX
E) Mental-health related	XXX	XXX	X,XXX	X,XXX
F) Other health problem or long-term condition that has lasted or is expected to last for six months or more	X,XXX	XXX	X,XXX	X,XXX
G) All HALs	X,XXX	X,XXX	X,XXX	XX,XXX



Note: Each limitation could be alone or in combination with another limitation.

# Age Profile of Individuals with HALs

	Total Population	Total with HALs	Incidence
0 to 14 years	X,XXX	XXX	X.X%
15 to 19 years	X,XXX	XXX	XX.X%
20 to 29 years	X,XXX	XXX	XX.X%
30 to 39 years	X,XXX	XXX	XX.X%
40 to 49 years	X,XXX	X,XXX	XX.X%
50 to 59 years	X,XXX	X,XXX	XX.X%
60 to 64 years	X,XXX	XXX	XX.X%
65 years and over	XX,XXX	X,XXX	XX.X%
Total	XX,XXX	XX,XXX	XX.XX%



# Gender profile of Individuals with HALs

Gender	Total Population	Total with HALs	Incidence
 Male	XX,XXX	X,XXX	XX.X%
 Female	XX,XXX	X,XXX	XX.X%

# The Accessible British Columbia Act

*The following accessibility principles are included in the Accessible B.C. Act*

In developing a proposed accessibility standard, the provincial accessibility committee must consider the following principles:




- (a) Inclusion
- (b) Adaptability
- (c) Diversity
- (d) Collaboration
- (e) Self-determination
- (f) Universal design

# Removing Barriers/Creating Inclusion






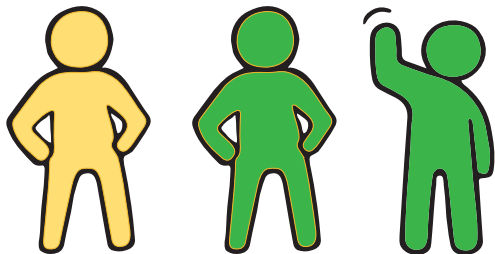


# Education

Education Type	Total Population	Total with HALs	Incidence
 No certificate, diploma or degree	X,XXX	X,XXX	XX.X%
 Secondary (high) school diploma or equivalency certificate	X,XXX	X,XXX	XX.X%
 Postsecondary certificate, diploma or degree	XX,XXX	X,XXX	XX.X%

# Education of Individuals with HALs

Education Type	Always	Often	Sometimes	Total
 No certificate, diploma or degree	XXX	XXX	XXX	X,XXX
 Secondary (high) school diploma or equivalency certificate	XXX	XXX	X,XXX	X,XXX
 Postsecondary certificate, diploma or degree	X,XXX	XXX	X,XXX	X,XXX



**X out of 3 individuals** 15 and older with health and activity limitations living in the District of X have post-secondary education.

# Field of study in the District of X of Individuals with HALs

Main Field of Study	Always	Often	Sometimes	Total
Education	XXX	XXX	XXX	X,XXX
Humanities	XXX	XXX	XXX	X,XXX
Social and behavioral sciences and law	XXX	XXX	XXX	X,XXX
Business, management and public administration	XXX	XXX	XXX	XXX
Physical and life sciences and technologies	XXX	XX	XXX	XXX
Mathematics, computer and information sciences	XXX	XX	XXX	XXX
Architecture, engineering, and related technologies	XXX	XX	XXX	XXX
Agriculture, natural resources and conservation	XXX	XX	XXX	XXX
Health and related fields	XX	XX	XXX	XXX
Personal, protective and transportation services	XX	XX	XXX	XXX



# Participation in the Labour Force

Labour Status	Total Population age 15+	Total with HALs	Incidence
In the labour force	XX,XXX	X,XXX	XX.X%
Not in the labour force	XX,XXX	X,XXX	XX.X%



# Labour Force Participation of Individuals with HALs

Labour Status	Always	Often	Sometimes	Total with HALs
In the labour force	X,XXX	XXX	X,XXX	X,XXX
Not in the labour force	X,XXX	XXX	X,XXX	X,XXX

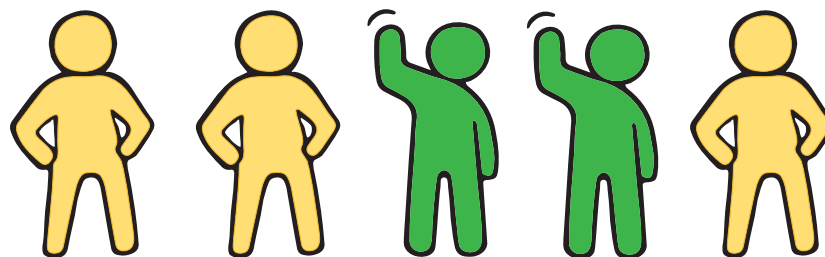


Individuals with HALs who are 15 and older who are living in the District of X are **less likely** to be in labour force.

# Full-Time Employment for Individuals with HALs

	Total with HALs	Always	Often	Sometimes
Worked during the year	X,XXX	X,XXX	XXX	X,XXX
Worked full-time	X,XXX	XXX	XXX	X,XXX
% Working full-time	XX.X%	XX.X%	XX.X%	XX.X%

Only **X in Five** Individuals with HALs who are in the labour force are employed on a full year, full time bases.



# Type of Occupations

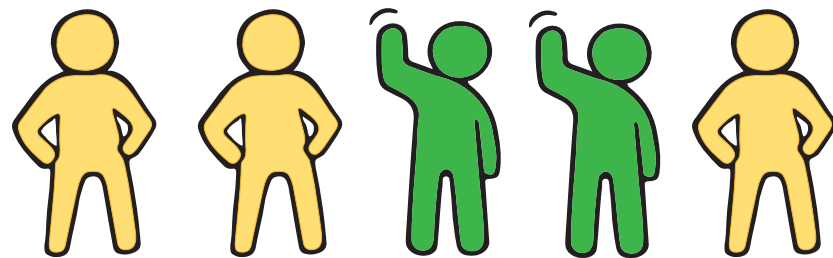
Types of opportunities for persons with HALs living in the District of X

Occupations (NOC)	Always	Often	Sometimes	Total
Sales and service occupations	XXX	XXX	XXX	XXX
Management occupations	XXX	XXX	XXX	XXX
Business, finance and administration	XXX	XX	XXX	XXX
Education law, social, community & government services	XXX	XX	XXX	XXX
Arts, culture, recreation and sport	XX	XX	XXX	XXX
Natural and applied sciences	XX	XX	XXX	XXX
Health occupations	XXX	XX	XXX	XXX
Trade, transport and equipment	XX	XX	XXX	XXX
Natural resources, agriculture, and production	--	XX	XX	XX
Manufacturing and utilities	XX	--	XX	XX

# Working Arrangements of Individuals with HALs

Work Activity	Always	Often	Sometimes	Total w/ HALs
Self-employed	XXX	XXX	XXX	X,XXX
Worked at home	XXX	XX	XXX	XXX
Worked in X	XXX	XX	XXX	XXX
Worked elsewhere in the region	XXX	XXX	X,XXX	X,XXX

**X in Five** Individuals with HALs work elsewhere in the region.



# Getting Around



# Travel to work for Individuals with HALs

Commuting mode	Always	Often	Sometimes	Total
Drive to work	XXX	XXX	X,XXX	X,XXX
Are a passenger	XX	XX	XX	XXX
Public transit	XXX	XX	XXX	XXX
Walked or cycle	XX	XX	XXX	XXX
Other methods	XX	X	XX	XX



**XX%** of individuals with health and activity limitations travel to work in a vehicle as either a driver or passenger.



**XX%** of individuals with health and activity limitations who travel to work, rely on the use of public transit.



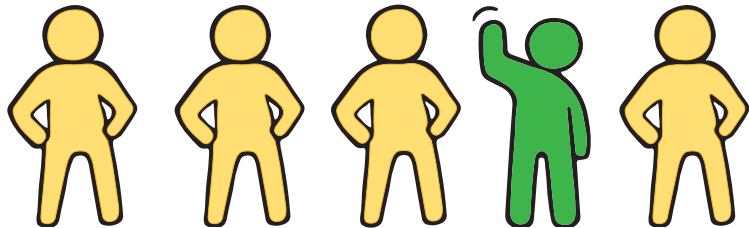
# Belonging and Connection



# Incidence of Low Income among Individuals with HALs

	Total Population	Total with HALs	Incidence
In low-income based on LIM-AT	X,XXX	X,XXX	XX.X%

LIM-AT is Statistics Canada's Low-Income Measure and represents 50% of the median adjusted after-tax income of all households.



**One in five individuals** with HALs living in the District of X were in low income based on Statistics Canada's Low Income Measure (after tax).

# Diversity of Individuals experiencing HALs

	Total Population	Total with HALs	Incidence
Immigrants	XX,XXX	X,XXX	XX.X%
Non-immigrants	XX,XXX	X,XXX	XX.X%
Non-permanent residents	X,XXX	XXX	XX.X%

# Nature of the Limitations among Individuals from Immigrant Backgrounds

	Total with HALs	Always	Often	Sometimes
Immigrants	X,XXX	X,XXX	XXX	X,XXX
Non-immigrants	X,XXX	X,XXX	XXX	X,XXX
Non-permanent residents	XXX	XX	XX	XX

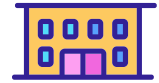


# Access to housing



# Housing Choices by Housing Type

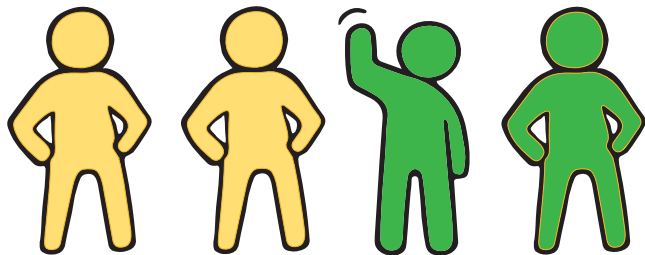
## for Individuals with HALs



	Single-detached house	Semi, row, town house units	Apartment stock (low-rise & high-rise)	Garden suites & accessory units
Total Pop.	X,XXX	X,XXX	X,XXX	X
Total with HALs	X,XXX	X,XXX	X,XXX	X
Incidence	XX.X%	XX.X%	XX.X%	--

# Housing tenure of Individuals with HALs

	All Households	Total with HALs	Incidence
Owners	XX,XXX	X,XXX	XX.X%
Renters	X,XXX	X,XXX	XX.X%



**Half of** Individuals renting in the District of X are individuals with HALs.



# CMHC Average Market Rents (October 2022)

	Metro Vancouver	X
Bachelor unit	\$X,XXX	\$X,XXX
1-bedroom unit	\$X,XXX	\$X,XXX
2-bedroom unit	\$X,XXX	\$X,XXX
3+ bedrooms	\$X,XXX	\$X,XXX



By comparison monthly shelter costs for rented dwellings are for individuals with HALs are **higher in the District of X** than in Metro Vancouver.

# Income profile of Individuals with HALs

	Total Households	Total with HALs	Incidence
Total Number of Households	XX,XXX	X,XXX	XX.X%
Under \$45,000	X,XXX	X,XXX	XX.X%
\$45,000 - \$69,999	X,XXX	X,XXX	XX.X%
\$70,000 - \$89,999	X,XXX	XXX	XX.X%
\$90,000 - \$124,999	X,XXX	XXX	XX.X%
\$125,000 - \$199,999	X,XXX	X,XXX	XX.X%
\$200,000 and over	X,XXX	X,XXX	XX.X%

# Average & Median Income of Individuals with HALs

	X	Metro Vancouver	British Columbia
Average household income 2015	\$XXX,XXX	\$XX,XXX	\$XX,XXX
Median household income 2015	\$XX,XXX	\$XX,XXX	\$XX,XXX



By comparison household incomes for 2015 for individuals with HALs **were higher in the District of X** than in Metro Vancouver.

# Inventory of Non-Market Housing (March 2022)

	Metro Vancouver	X
Transitional and Supportive Housing	X,XXX	XXX
Group homes and special needs housing	X,XXX	X
Supportive housing for seniors	X,XXX	XXX
Non-Market Housing /Social Housing Units	XX,XXX	XXX
Seniors' housing	XX,XXX	XXX
Family housing	XX,XXX	XX
Rent assistance for households living in the private market	XX,XXX	XXX
SAFER (Shelter Aid for Elderly Renters)	XX,XXX	(Fewer than XX units)
RAP (Rental Assistance for Low Income Families)	X,XXX	(Fewer than XX units)
Canada-BC Benefit	X,XXX	(Fewer than XX units)