



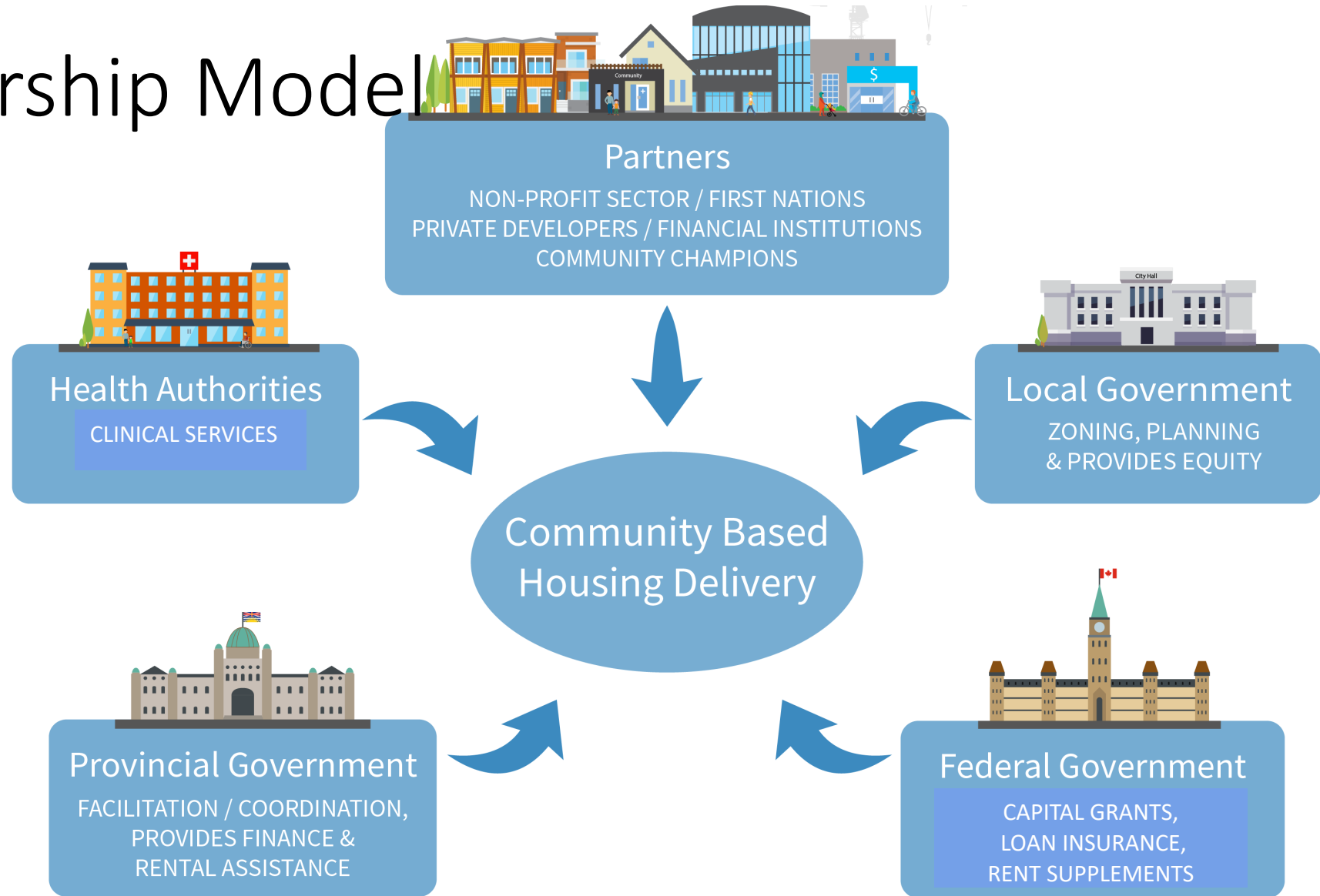
Tackling Homelessness

Heidi Hartman, Associate Vice President
Supportive Housing & Homelessness

- April 4, 2023



Partnership Model



Housing Ecosystem: determine priorities based on regional and community needs



Supporting the homelessness response

- Short-term
- Temporary shelter
- Temporary supportive homes
- Homeless rent supplements
- Outreach teams



Long-term

- Permanent homes with supports
- Affordable rental housing
- Private market rent assistance



Challenges

- Capacity in sector – housing and service providers
- Extreme Winter Response (EWR) review
- Space for temporary shelters, temporary housing
- Sites for long-term purpose-built homes

Working together

- Create a municipal housing strategy, in collaboration with Indigenous partners
- Identify non-profit housing champions in your community #buildhomesnotbarriers
- Offer developable land at nominal value for the creation of affordable housing
- Expedite zoning on short-term solutions and long-term community housing
- Municipal incentives for affordable rental housing



Questions?

Heidi Hartman

Associate Vice President

Supportive Housing & Homelessness

hhartman@bchousing.org

604-631-0367