

Managing Old Forests in British Columbia

What's Next

U B C M
W O R K S H O P

S E P T E M B E R 1 3 , 2 0 2 2



Workshop Purposes:

- Provide an update on the pathway to move forward on all recommendations.
- Share the approach for engaging communities in the dialogue around old forests management.



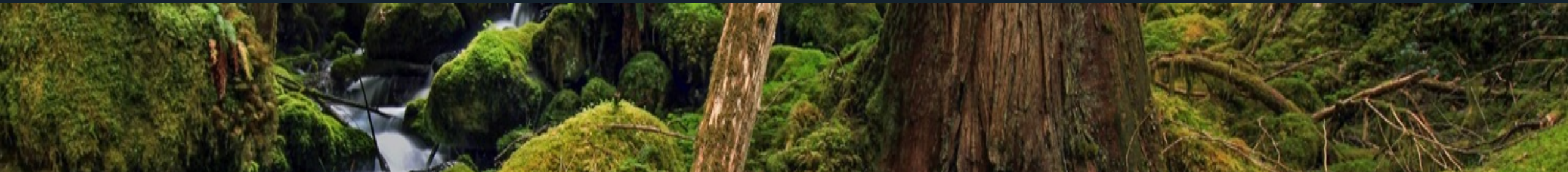
Mandates by Ministry

Minister Conroy:

- Overall public facing lead on the old growth strategic review.
- First Nation engagement; industry and stakeholder engagement.
- Lead for operational recommendations (e.g., inventory, innovation in silviculture).

Minister Osborne:

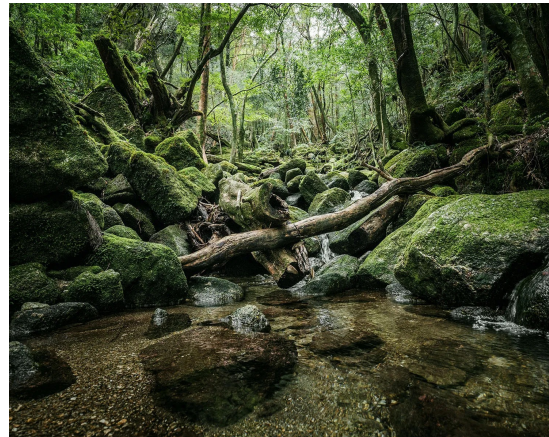
- Lead for foundational recommendations that set the required conditions for change (prioritizing ecosystem health, more inclusive governance).
- Lead for land use objective setting.



Agenda:

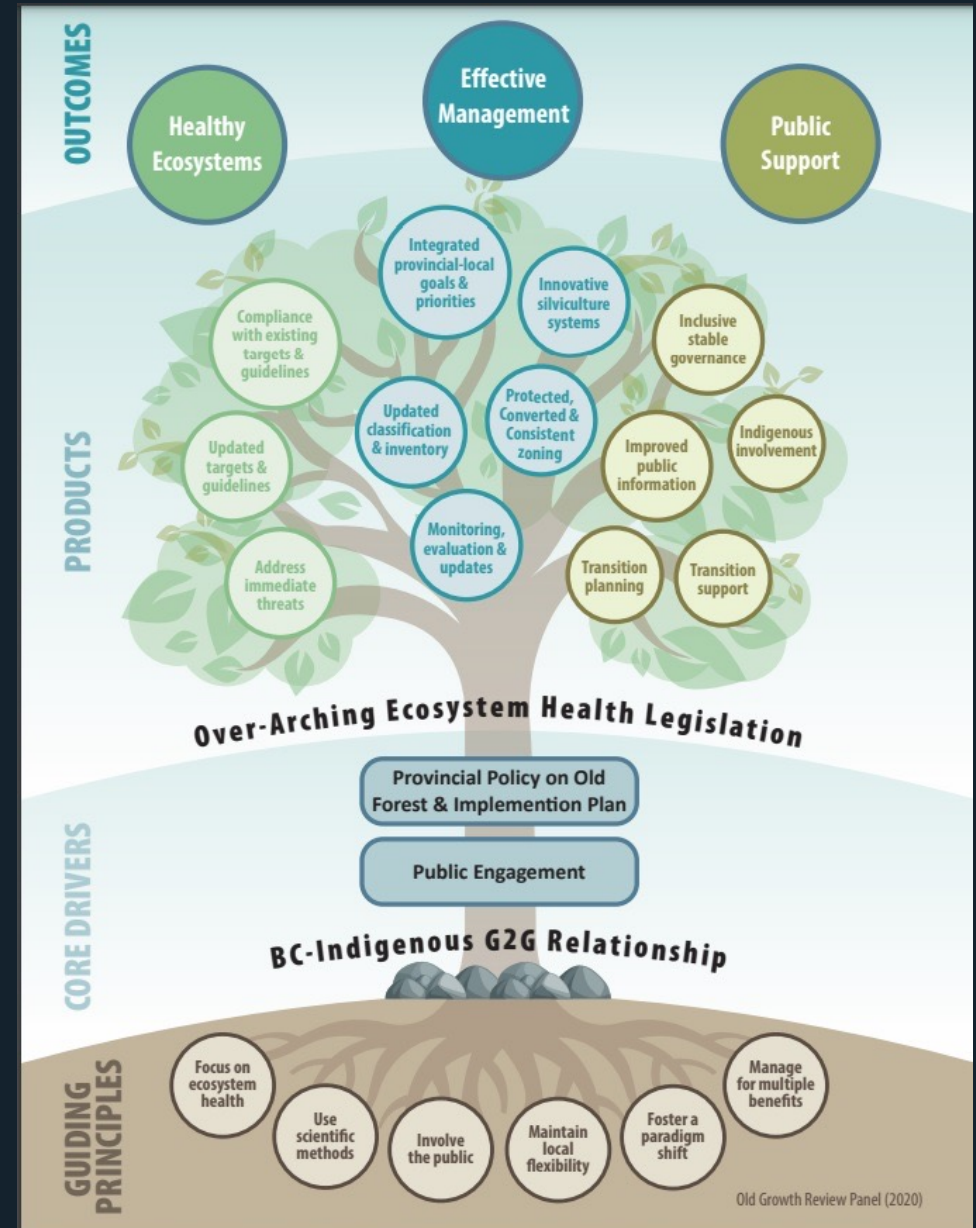
1. High-level Re-cap of Strategic Review
2. Engagement Approach

Discussions after each topic



A New Future for Old Forests

A Strategic Review of How
British Columbia Manages
for Old Forests Within its
Ancient Ecosystems



Healthier Ecosystems, Better Management and Greater Public Support

Transformational

:

Indigenous
partnership

Prioritize ecosystem
health

Strengthen governance

Better public
information

Operational:

Protect ecosystems at risk

Improve management of BC's
forests by setting objectives,
developing targets and guidance

Monitor and evaluate

Develop innovative silviculture
practices

Improve inventory

Adopt 3-zone management system

Transitional:

Transition to new
management
approaches

Create resilient
communities

BC's Forest Landscape



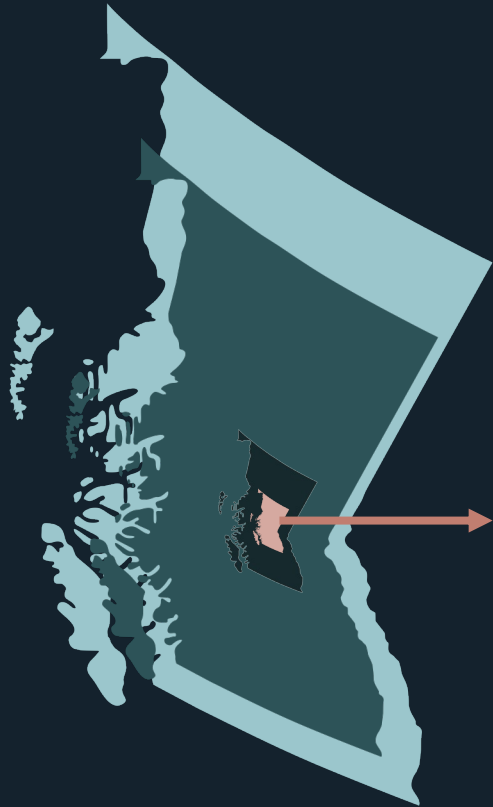
Total Area of BC: 95 million ha

Provincially Managed Forests
and National Parks: 56 million ha

Old Forests: 11 million ha

At-risk old forests as identified by the
Technical Advisory Panel (includes a small
amount of older mature forests):
4 million ha

At Risk Old Forests



Old forest
in which
conversations
with First
Nations are
ongoing and
deferral status
has not been
confirmed
1.5 million ha

Old forest
in which
deferral is
supported by
First Nations
or area is
voluntarily
deferred
1.1 million ha

Protected areas or
areas generally
unavailable
for harvesting
1.4 million ha

As of April 2022

Pathway to Implementation – Outcomes



Short Term

Develop a plan to
implement the
recommendation.



Medium Term

Align annual priority
work to deliver on the
plan.



Long Term

Realize the shared
provincial and
Indigenous vision for
old forests
management,
through policy
development,
strategic, tactical and
operational plans.



Discussions


Engagement Approach

Moving from “engagement” to
“partnership”



Local government, industry,
environmental organizations,
labour groups





Design the process in collaboration with
stakeholder groups

Leverage existing relationships and organizations
including communities (e.g., UBCM), industry
(e.g., COFI), ENGOs, and labour organizations

Prioritize working with innovative, solution
orientated leaders

Targeted
Engagement with
Communities and
Stakeholders

Indigenous Collaboration

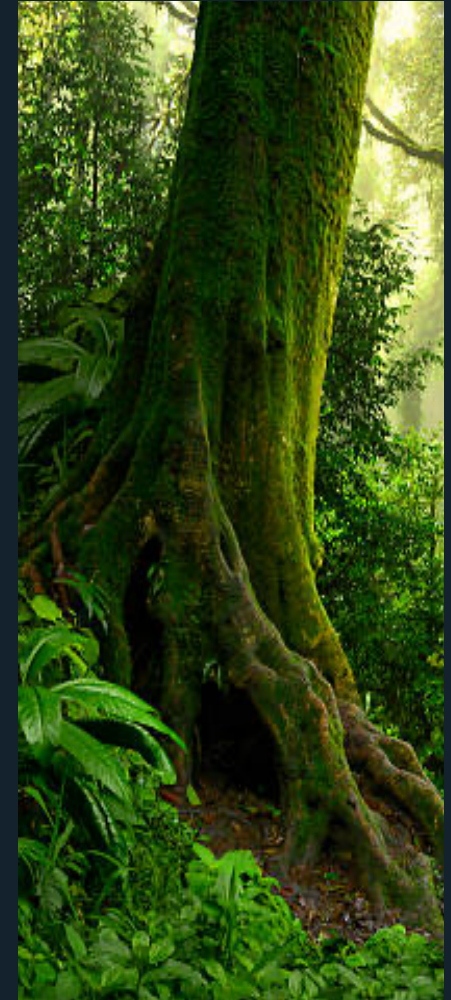
Implement collaboration approaches based on past successful models

Provide opportunities for Nations to engage at a broad provincial level, through existing provincial-Indigenous forums, or at G2G level

Collate ideas through the various mechanisms to identify key actions

Socio-economic and Community Support

- Ministry of Jobs, Economic Recovery, and Innovation leads the coordination of forest worker and community supports, in collaboration with the Ministry of Advanced Education and Skills Training and the Ministry of Labour.
- Budget 2022 provides \$185 million over the fiscal plan to support forestry workers and communities affected by old-growth logging deferrals.
- Longer-term socio-economic impacts will depend on new approaches to old forest management including:
 - Areas that may be considered for long-term protection.
 - New forest management silviculture, retention, zoning or land use objectives.
- Continued work on broader forest policy modernization.





Discussions

Summary

1. Your input is valuable
2. Commitment to ongoing communications and connections
3. Community support during transition is critical to success





Thank You