

Community-Led Economic Recovery: The Boundary Approach

Roly Russell (RDKB Chair) & Jennifer Wetmore,
Community Futures Boundary)



(image: Rafferty Baker/CBC)

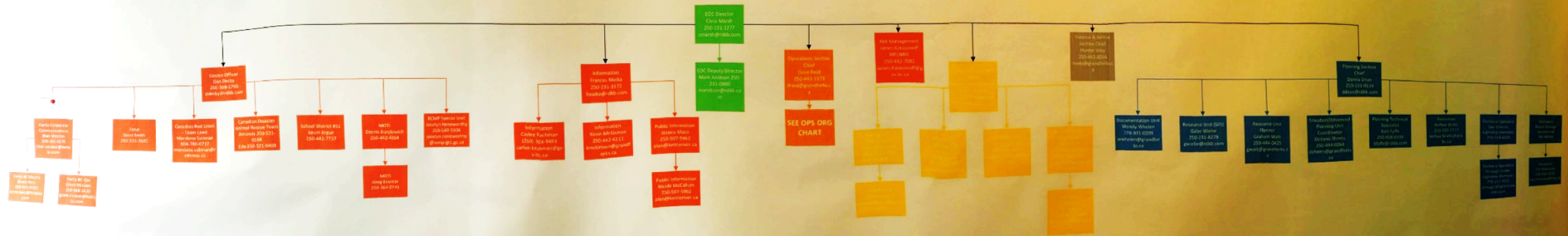


Significant flooding occurred throughout the Boundary Region in May 2018. 300km of river/lake front were evacuated, nearly 3,000 residents. Current analysis indicates this was a 1 in 200 year flood.

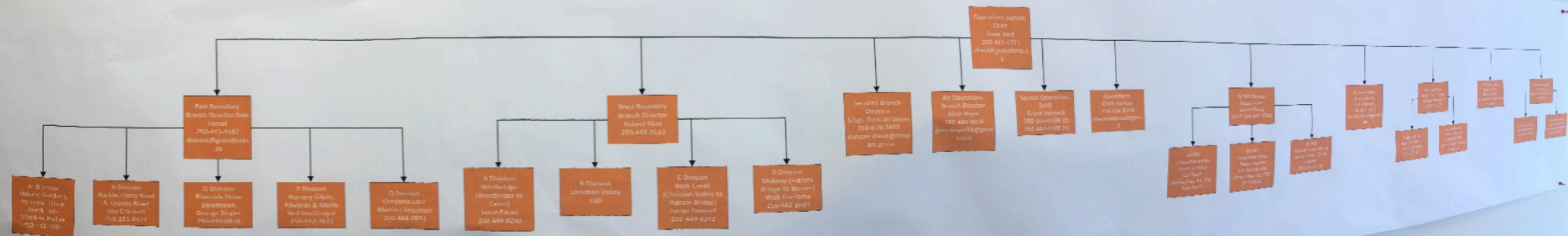
(JESSE WINTER/STARMETRO VANCOUVER)



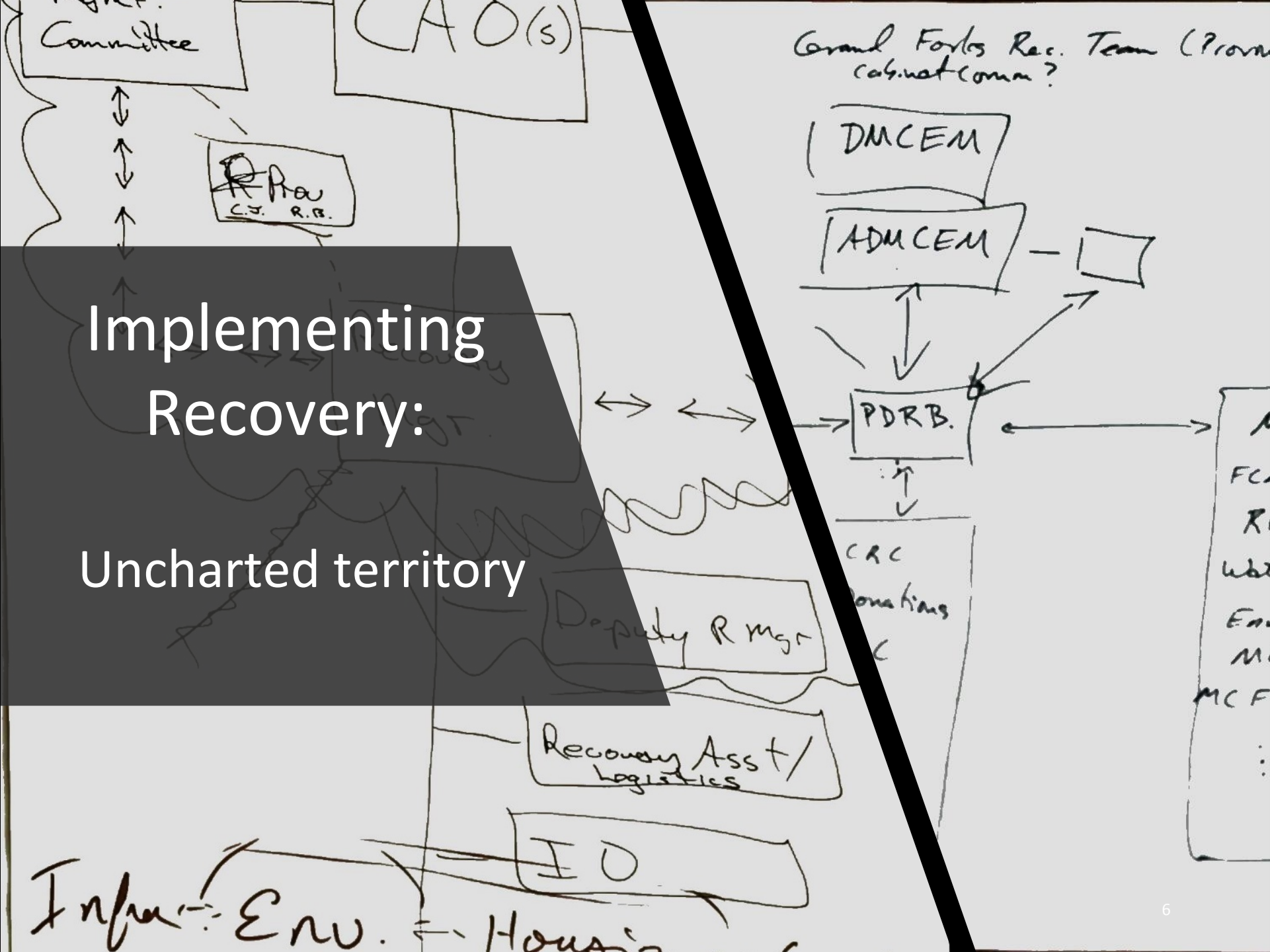
EOC ORGANIZATIONAL CHART – MAY 16, 2018



BOUNDARY EOC – OPERATIONS ORG CHART (MAY 16, 2018)







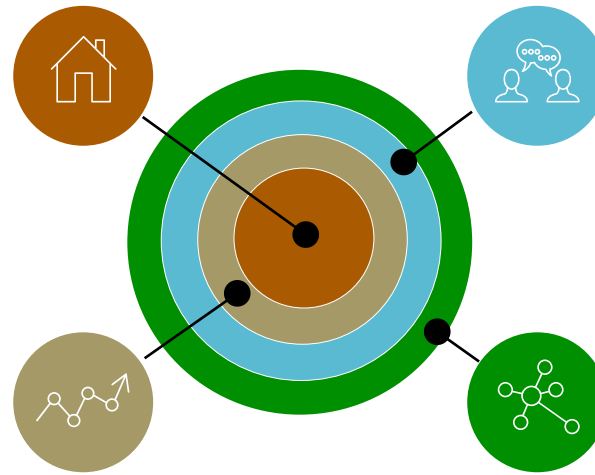
Boundary flood recovery pillars

BUILT INFRASTRUCTURE
& HOUSING

SOCIAL / HUMAN
Community & Personal

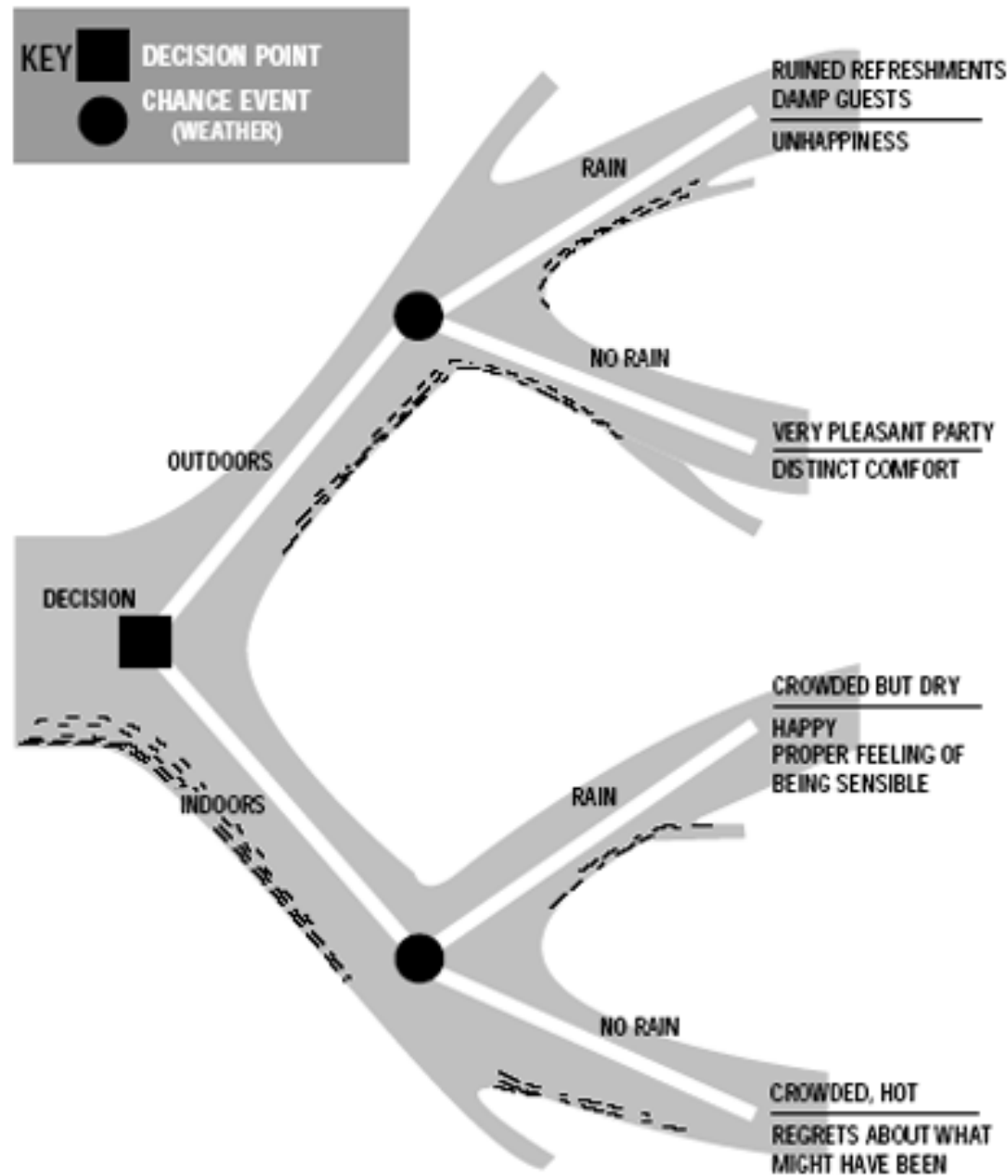
ECONOMIC /
BUSINESS

NATURAL /
ENVIRONMENTAL



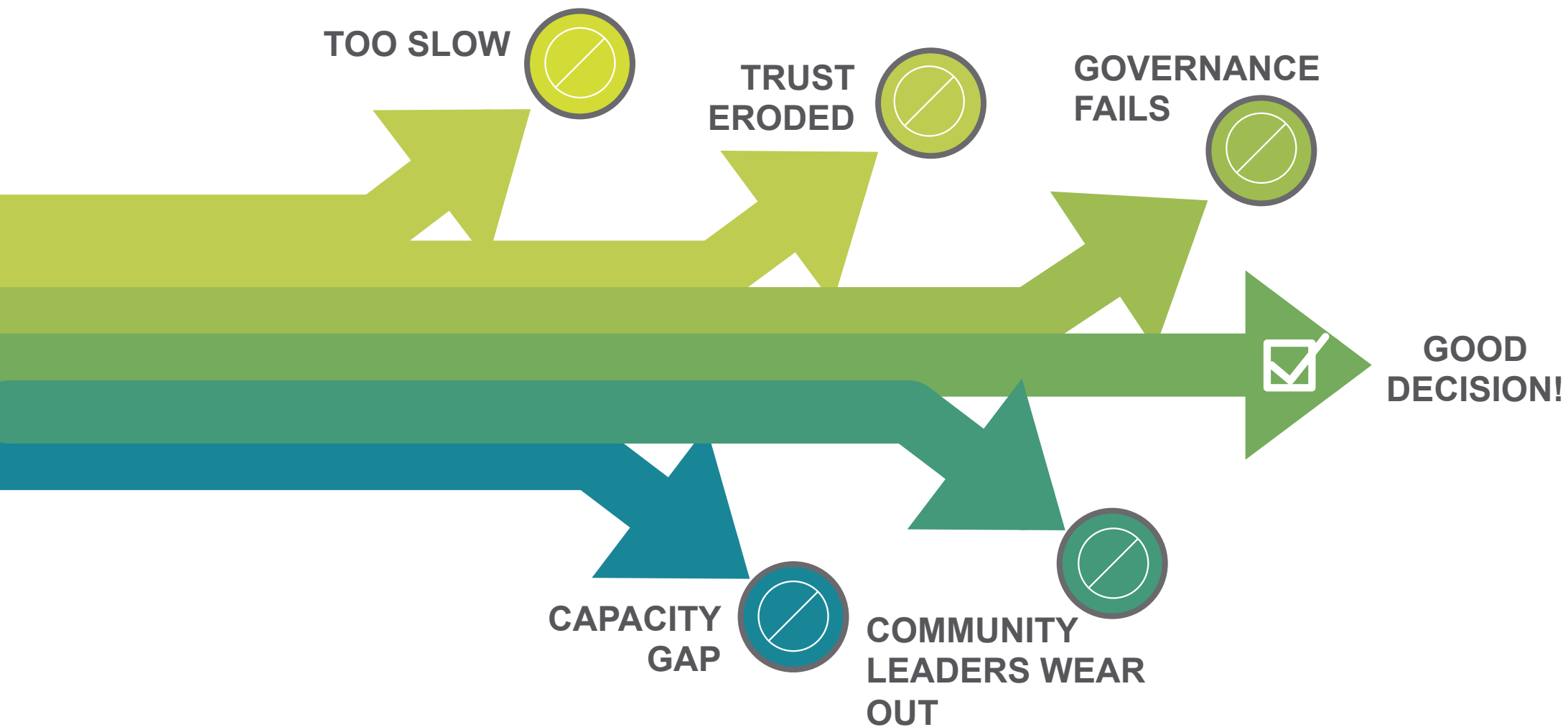
Projects fall into one or more categories; projects leads depend on context

EXHIBIT I. Decision Tree for Cocktail Party

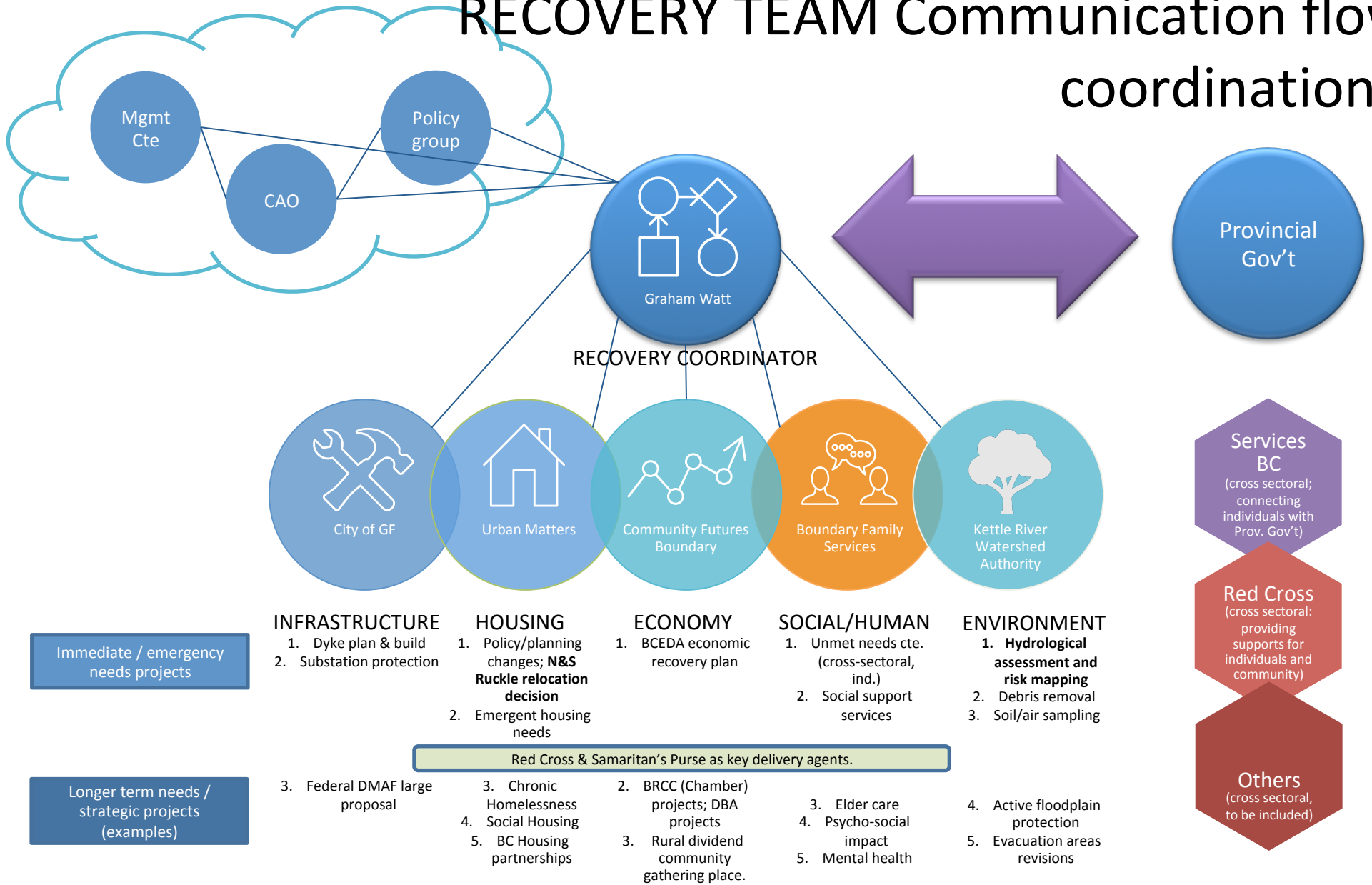


RISKS

(of community-led recovery)



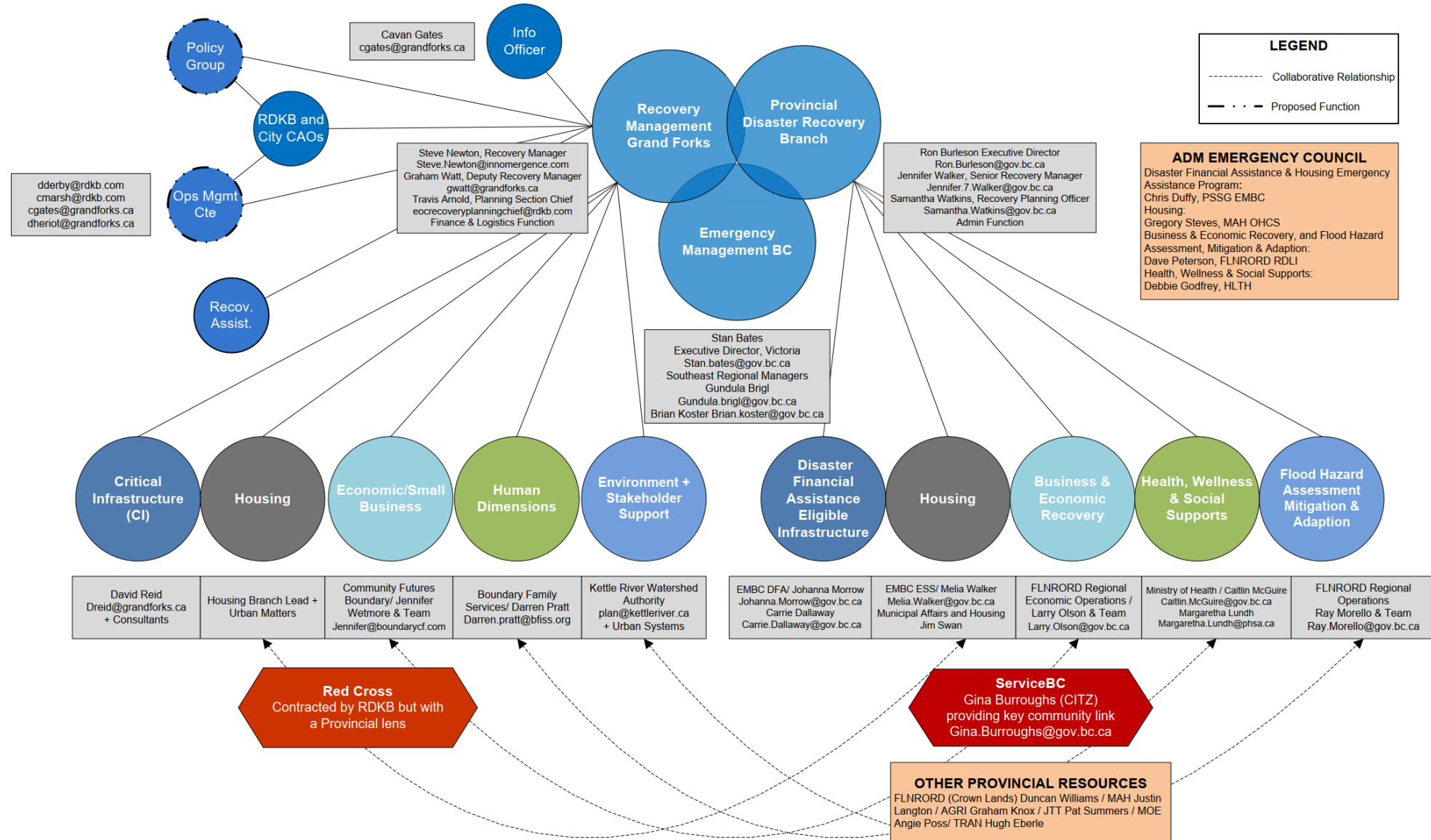
RECOVERY TEAM Communication flows and coordination nodes



GRAND FORKS RECOVERY STRUCTURE

REGIONAL DISTRICT / CITY TEAM

PROVINCIAL CROSS-MINISTRY TEAM



Community Led Economic Recovery

Community Futures' Role in Disaster Recovery in the Boundary Contract with the Regional District to provide **Economic Recovery Services** – approved for one year. What does that mean?

Immediate Economic Loss Sector	Value
Structure/foundation damage/repair	\$10,302,400
Inventory/product	\$826,478
Equipment/Office/Assets	\$1,275,820
Sales/Revenues	\$6,581,165
Other	\$7,169,731
Total	\$26,155,594

Lessons Learned & Challenges Ahead



1.Community
builds
community.

1.Insurance
clarity is low,
including
government's
role.

1.Tools need
to be
mandated
and designed
for recovery.

1.DFA
doesn't deal
well with
businesses.

Be ready.



Questions?

Contact:

Jeremy Stone

jeremy_stone@sfu.ca

Jennifer Wetmore

jennifer@boundarycf.com

Roly Russell

rrussell@rdkb.com

(JESSE WINTER/ STAR METRO)

- Spare slides below here (please include at end pf the powerpoint)

Our objective is to build back better by following these seven strategic objectives:

Protect Public Safety

Foster and Improve Health and Wellness and Support Housing Recovery

Deliver Permanent Solutions

Facilitate Economic Revitalization

Facilitate Environmental Resilience & Adaptation

Engage Community and Stakeholders

Ensure Equitable, Fair and Reasonable Decisions

Community Led Economic Recovery

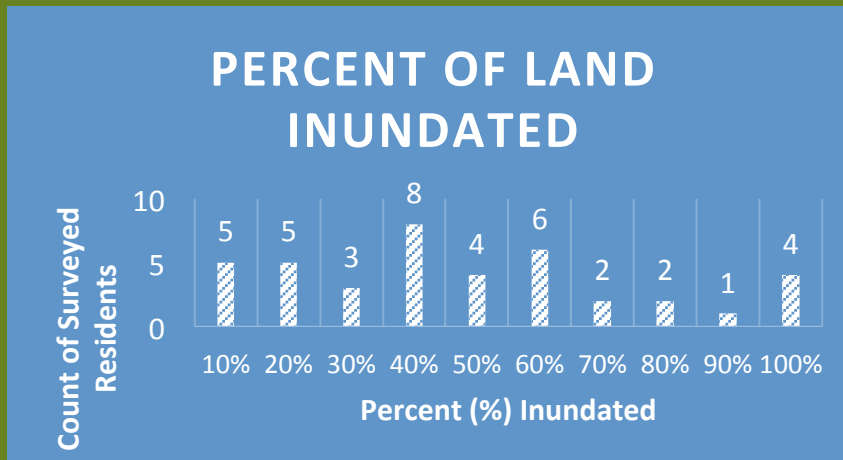
So What Next?

From the work done with BCEDA, multiple requests were made to the Province:

- A request for 2.5 million dollar trust fund to assist business and the ag sector in the region
- A request for funds to assist with downtown revitalization
- A request for funds to create focused economic development
- A request for funds to continue to explore Community Centre/EOC

Community Led Economic Recovery

The nuances of the Ag Sector



From the 41 respondents reporting land inundation, 1760 acres were inundated with floodwaters, with an average of 44% per property.

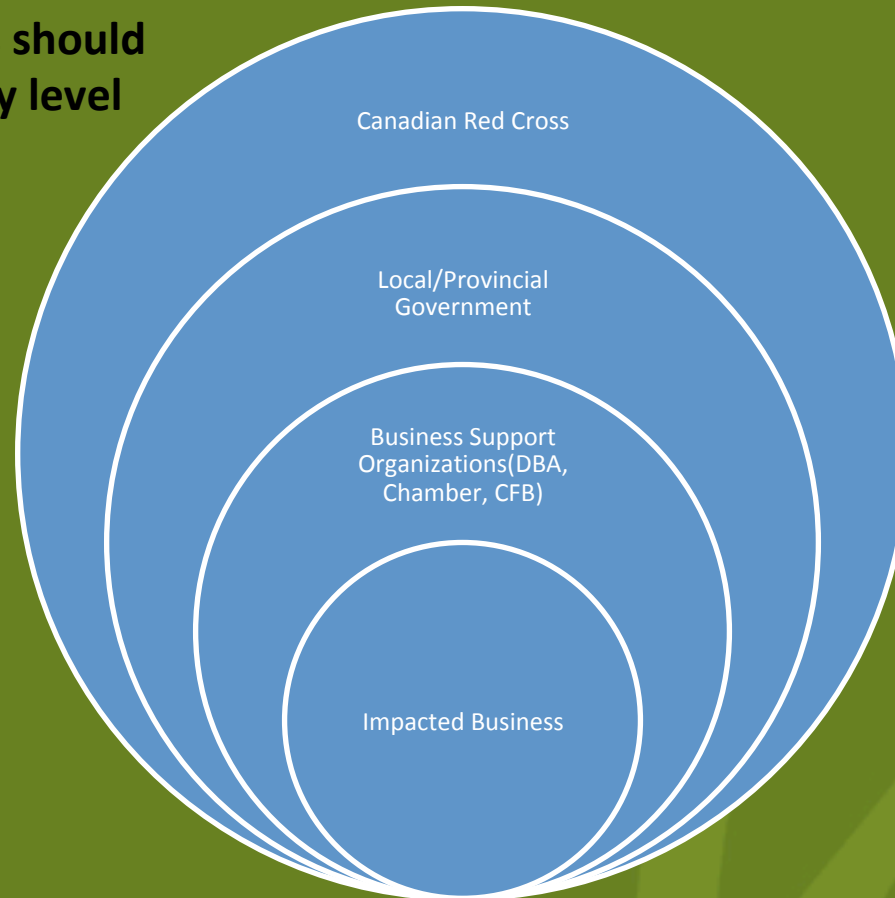


Of the 19 respondents reporting crop losses, the total sum of crop losses was \$637,208 the average loss was \$33,537.26 and the median loss was \$8,989 per property.

* Data collected by Boundary Flood Recovery

Community Led Economic Recovery

Ideally, support mechanisms should be in place at the Community level



By creating a funneled process, we slow an already painstakingly slow process down further.

Community Led Economic Recovery

“It is not the critic who counts; not the man who points out how the strong man stumbles, or where the doer of deeds could have done them better. The credit belongs to the man who is actually in the arena, whose face is marred by dust and sweat and blood; who strives valiantly; who errs, who comes short again and again...who at the best knows, in the end, the triumph of high achievement, and who at the worst, if he fails, at least fails while daring greatly.”

Theodore Roosevelt