



SUSTAINABLE
INFRASTRUCTURE
SOCIETY

Regional Cooperative Networks

Proposals by the
Sustainable Infrastructure Society
in support of

Safe & Sustainable Water for BC



SUSTAINABLE
INFRASTRUCTURE
SOCIETY

[Regional Cooperative Networks](#)

www.SustainIS.Org

SIS Programs

- ❑ SIS creates programs for community water suppliers
- ❑ Work has been greatly supported by the BC Ministries of:
 - Health
 - Community Services
 - Environment.
- ❑ We seek cooperation with others

Purpose of Presentation

- ❑ Note CWS challenges
- ❑ Present practical solutions
- ❑ Outline Regional Cooperative Networks
- ❑ Describe operation
- ❑ Link with SIS programs
- ❑ Suggest role of regional districts & UBCM

Paraphrase of an article by: **Steve E. Hrudehy DSc (Eng) PhD,**
Professor Emeritus, School of Public Health, University of Alberta

- ❑ Walkerton: “..after 8 years and millions of dollars, systemic problems persist”.
- ❑ Many smaller ... communities cannot cope with all the technical and managerial challenges:
- ❑ An inherent structural flaw remains: we need well-resourced treatment systems and highly trained personnel
- ❑ We need regional pooling of operational and managerial expertise, combined with modern remote monitoring technology.
- ❑ Billing should reflect the actual cost of assuring safe water.
- ❑ Sensible investments needed in both drinking-water systems and region wide resources are needed.
- ❑ Safe community drinking water is one of our best public health investments. **We do not need another Walkerton disaster to help us appreciate the true value of our community water supply.**

Sustainable Infrastructure Society

- ❑ Incorporated: 2005 as a non-profit society.
- ❑ Support: BC Ministry of Health &MCS
- ❑ Office: on the campus of UVIC Victoria
- ❑ Linked: Innovation & Development Corporation at UVIC

Mandate:

To assist in the development and application of programs for building the managerial, financial, and operational capacity of water suppliers....in BC.

Advice & Approach

Sustainable Infrastructure Society (SIS) has an advisory board:

- BC Groundwater Association
- BC Water and Waste Association
- Coastal Water Suppliers Association
- Small Water Users Association of BC
- Water Supply Association of BC.

Approach:

- Creates programs that become financially self-sustaining
- Needs seed capital to develop & implement.

Example: Liability Insurance:

Objective: Accessible & Affordable Liability Insurance for CWS

- Development
- Confirmed markets
- Created partnerships with Industry
- Developed a superior insurance product
- Created an online support system

Operation:

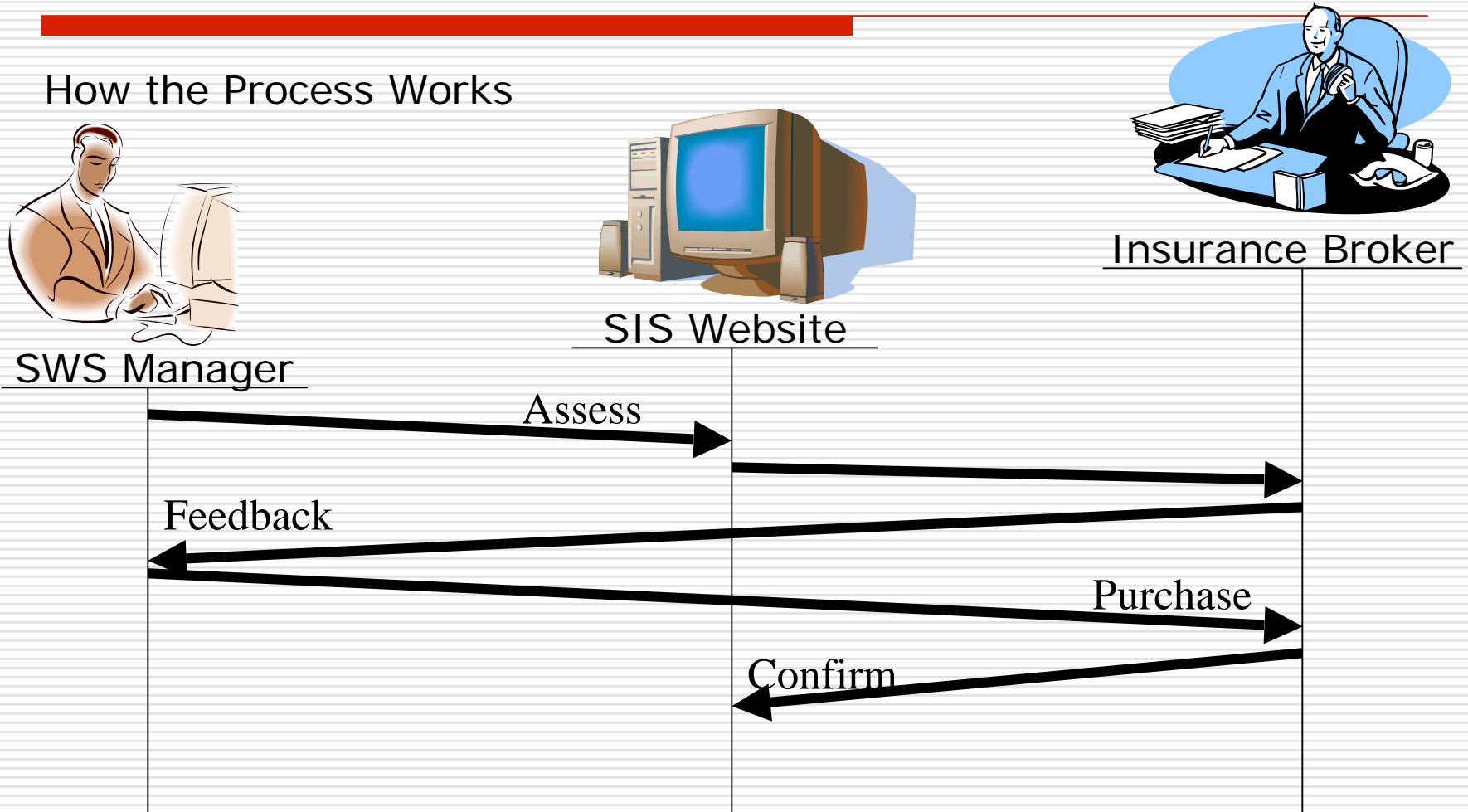
- Communicate via water supplier associations
- Deliver the product.

Results:

- Over 80 systems now insured
- Over \$200,000 saved in premiums

Rating System

How the Process Works



SIS Programs

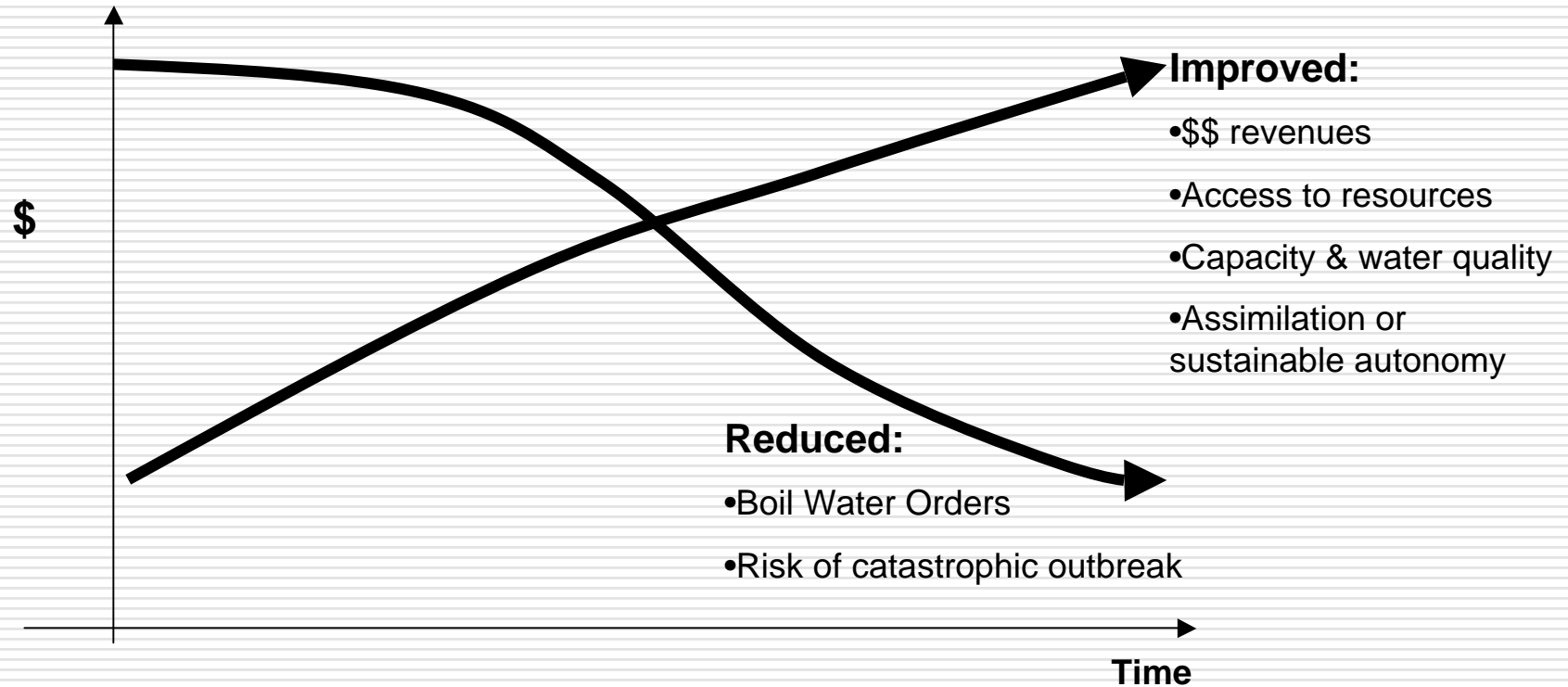
Programs underway

- Liability Insurance
- POE / POU

Programs in development

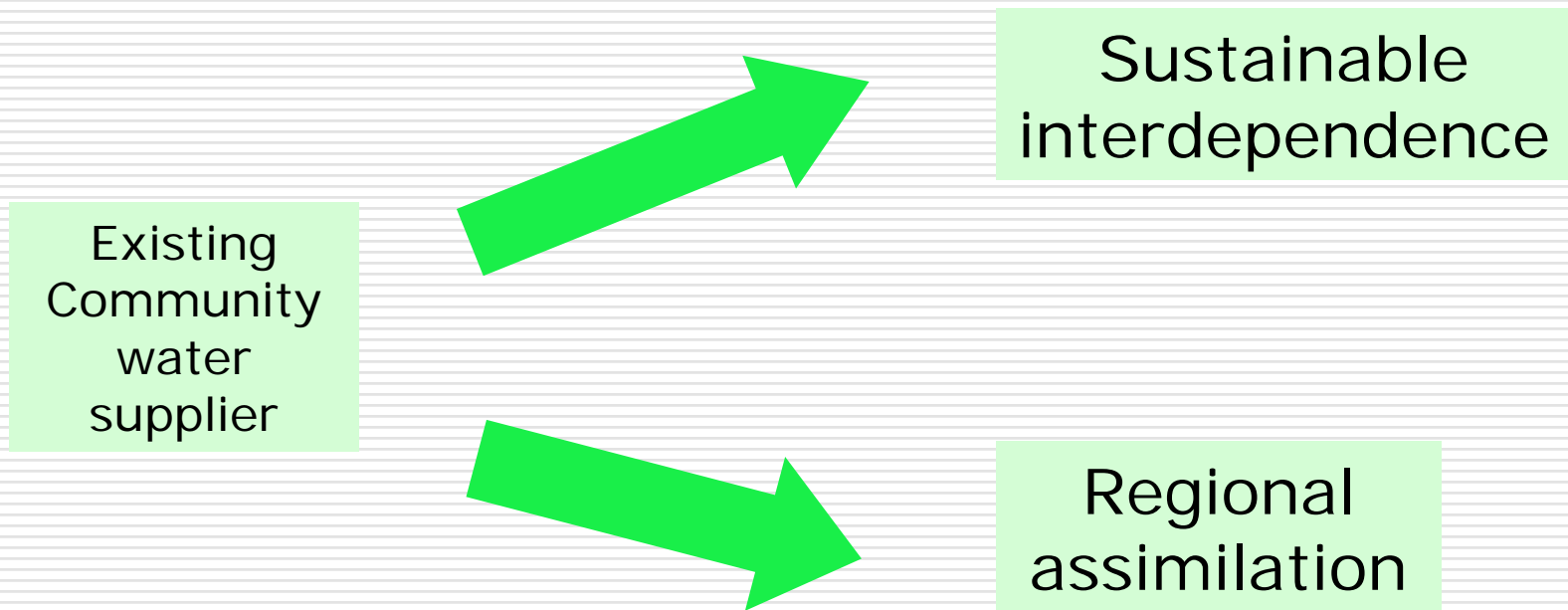
- Operational Assistance Program
- Benefits program
- Modular Water Treatment
- Access to Funding Program
- Scaled SCADA Program
- Watershed Management Program

Benefits to BC

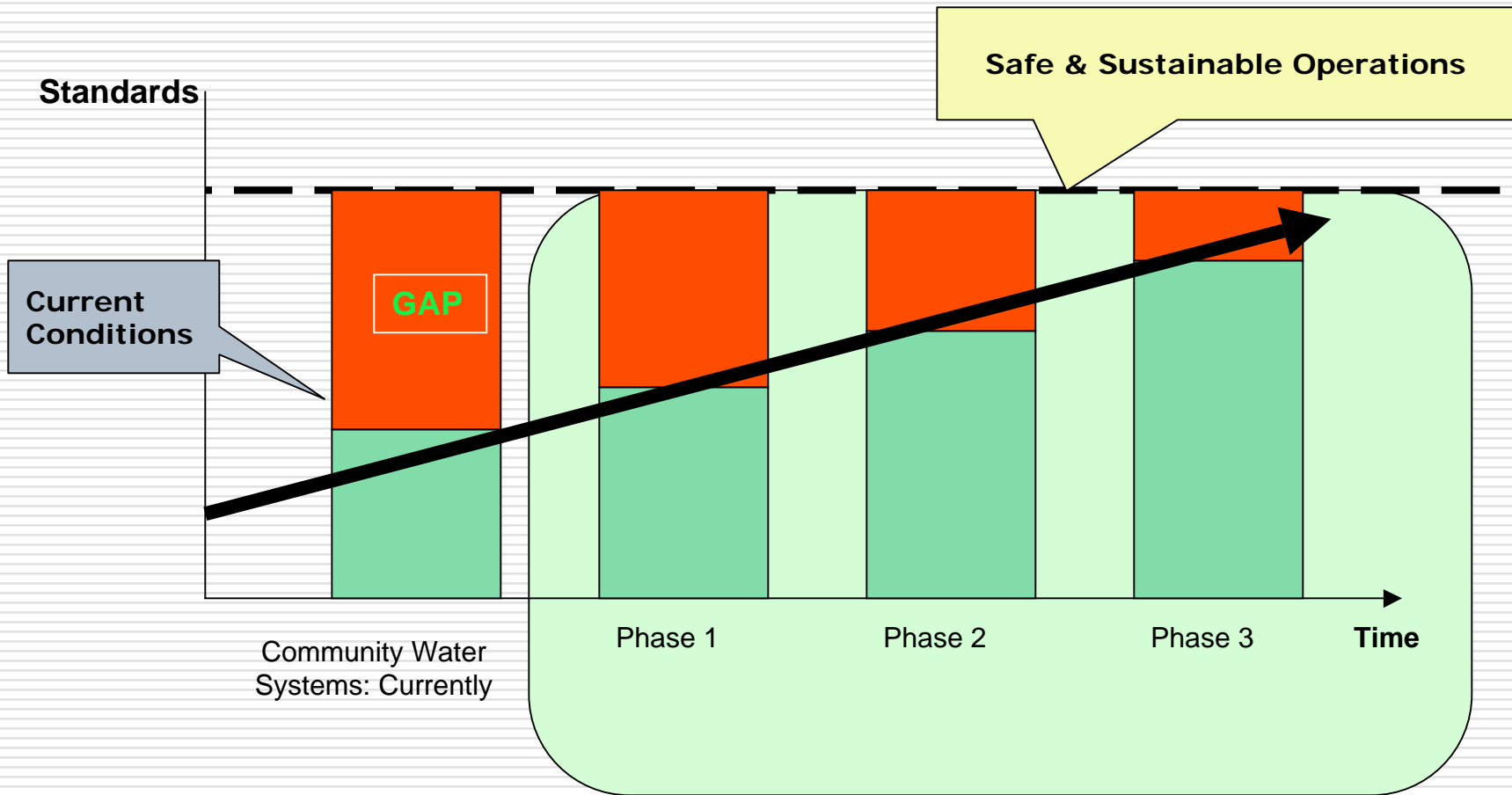


Paths Towards **Safe Water**

Two paths



Closing the Sustainability Gap



Bridging the Gap: **With RCN's**

RCN 's can help to:

- Improve SWS managerial capacity
- Make services & products affordable
- Link SWS with regional government
- Provide improved access to funds
- Communicate the true value of water
- Facilitate rate reviews
- Establish benchmarks
- Upgrade infrastructure

What is a Regional Cooperative Network?

A RCN is:

Levels of government, community water suppliers and other organizations, all working together in a coordinated fashion to build the safety and sustainability of water resources and supplies in BC.

SIS: A Key Role in RCN

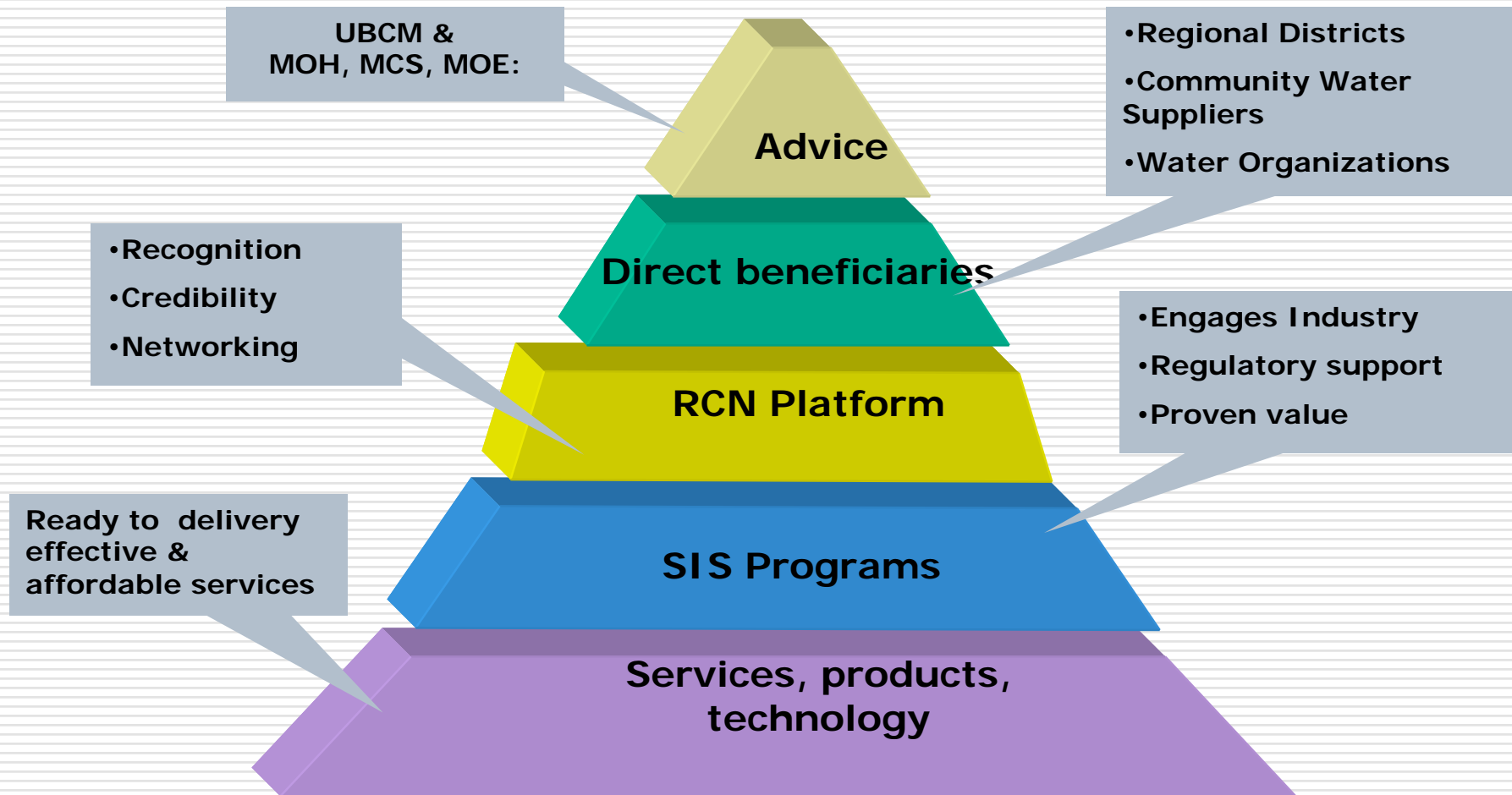
SIS has a key role to play because we:

- Create the practical tools
- Provide convenient access
- Bring groups together
- Talk with government
- Work cooperatively with regulators
- Know Community Water Suppliers (CWS): our “Registered Users”

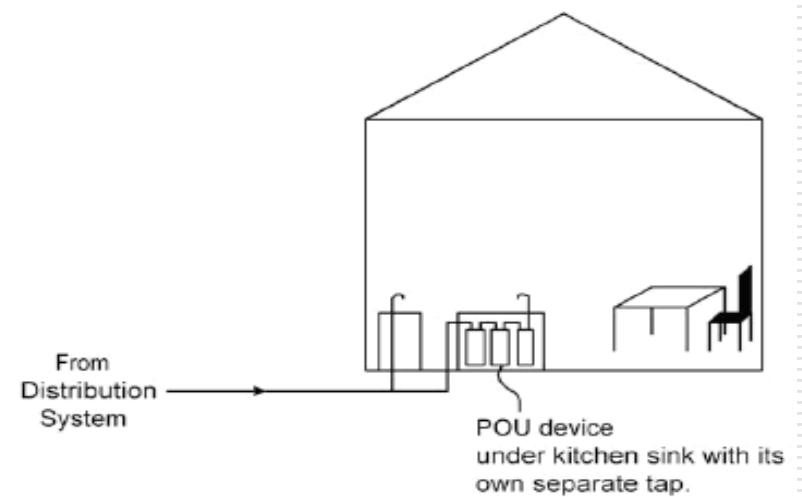
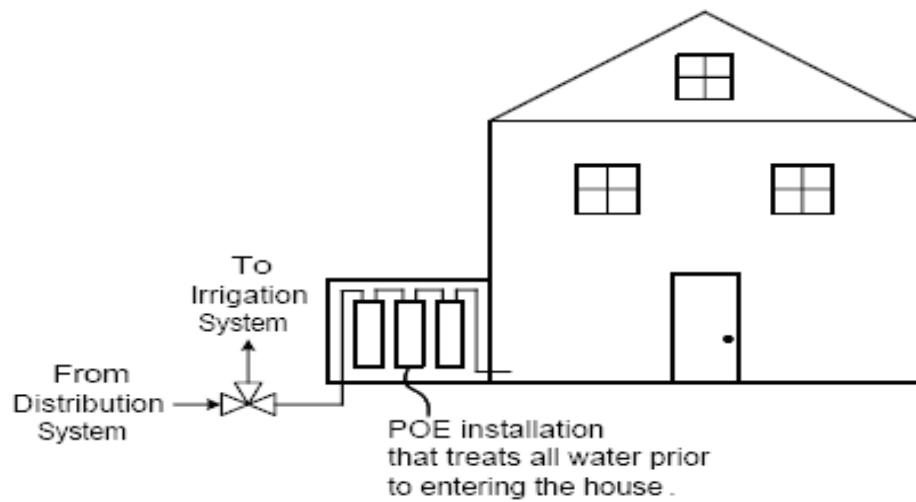
SIS: A Unique Position

- ❑ Support the regulatory process: not a regulator
- ❑ Assist policy development: not a branch of government
- ❑ Embody business disciplines: not a for-profit corporation
- ❑ Formulate services & products: not part of industry
- ❑ Consolidate markets: not business organization
- ❑ Reflect interests of water suppliers: not a water association.

RCN: Integrated Structures



POE /POU Systems



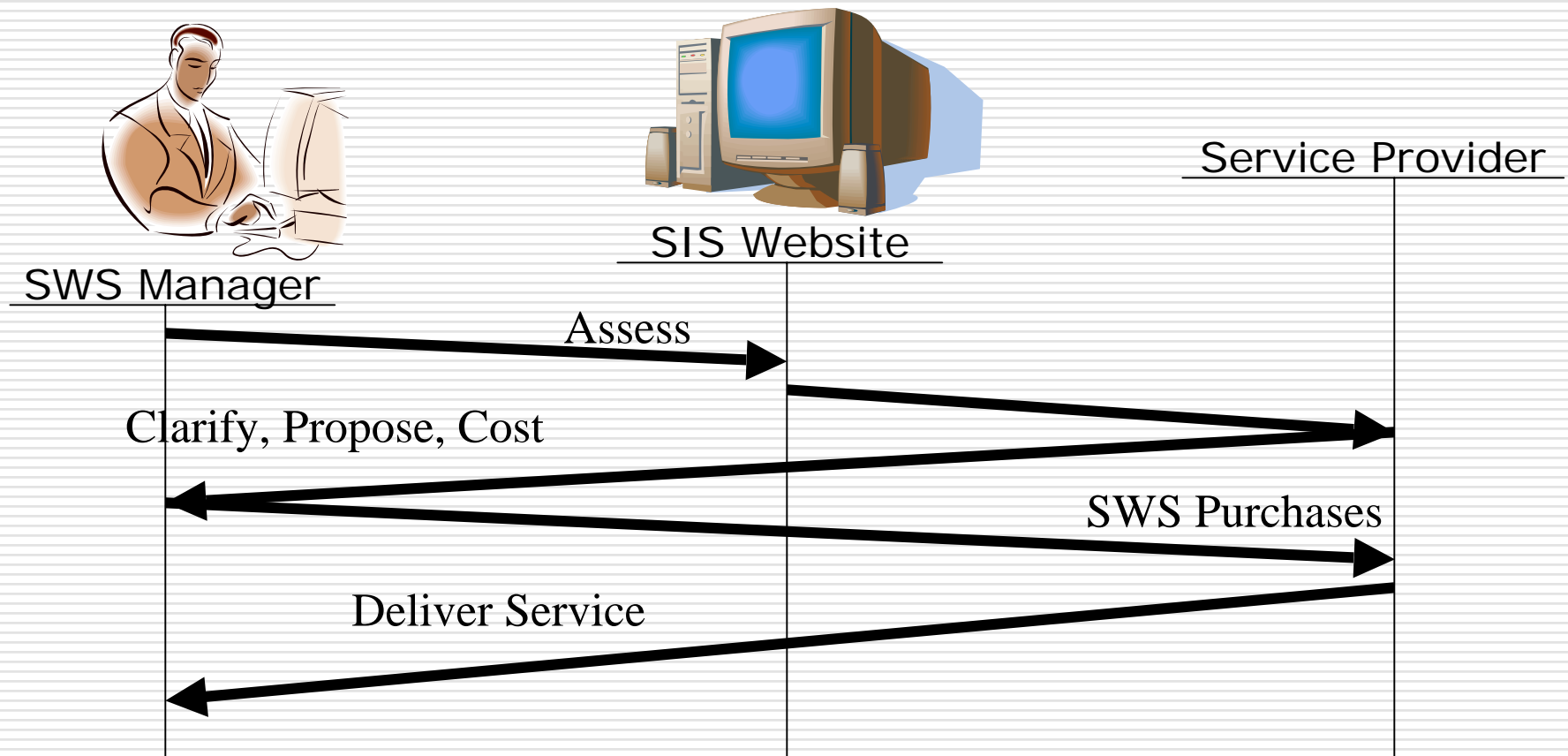
Operational Assistance Program

Assist water supply systems to employ the services of a qualified operator under contract to:

- Provide all operator services, or
- Support work of existing operator, or
- Provide relief services when existing operator:
 - Is sick
 - On vacation
 - Needs experienced assistance.

Operational Assistance Program

How the Process Works



Linked SCADA

(Supervisory Control and Data Acquisition)

Supports delivery of safe supplies:

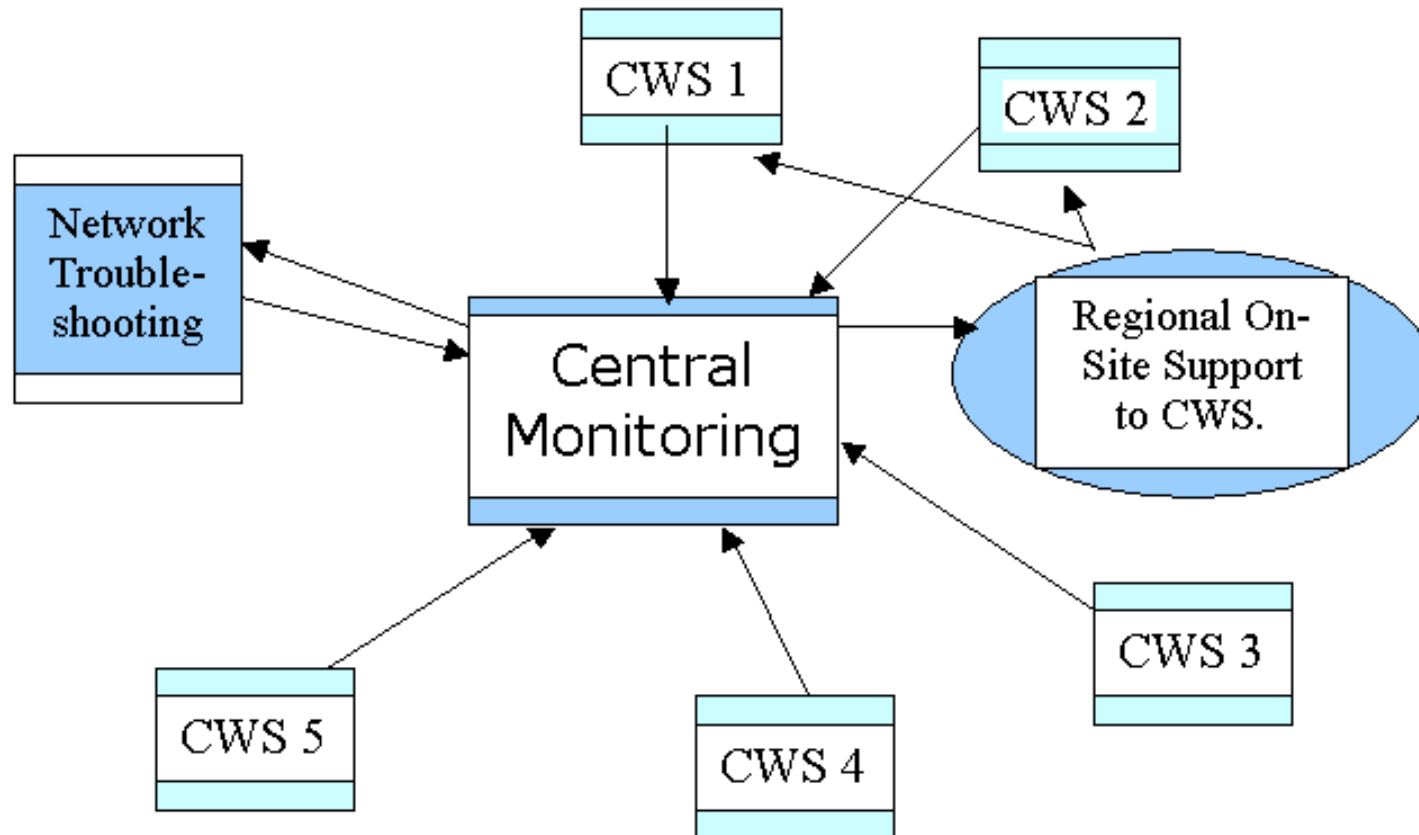
- Monitor
- Control
- Data Acquisition & Display

Supports customer communication.

Supports shared resources & expertise:

- "Circuit rider" serves several CWS
- Provides off-site overview of operations.

Linked SCADA network



Tools to help assimilation

SIS can create tools to:

- Assess the capacity of SWS
- Calculate the costs of upgrading
- Analyse the consequences of assimilation
- Involve stakeholders
- Communicate with customers
- Manage governance & administration

SIS Programs: Summary

- Liability insurance
- POE / POU
- Operational Assistance Program
- Modular Water Treatment
- Access to Funding
- Scaled SCADA
- Benefits program
- Watershed protection
- Assimilation assistance

Subject: Re: **WaterBC Winter 2008 Newsletter**

From: Larry Adams

[mailto:ladams@bowenlandproperties.bc.ca]

Sent: Friday, February 01, 2008 9:21 AM

To: Renee O'Leary

Renee, **thanks for the work you and SIS are doing** to arrange for programs to help with financial issues facing small water systems (i.e. liability insurance, access to funding, staff benefits package). **You're right that with economies of scale, things become possible which are not possible when each small system tries to solve these problems on its own.** Thanks for your coordinating efforts!

Larry Adams

Cowan Point Utility Company Ltd.



Regional Cooperative Networks

www.SustainIS.Org

RCN: Role of R. Districts, UBCM, Ministries

Suggestions:

- Form advisory groups
- Help identify needs
- Examine options to meet needs
- Participate in design of tools
- Provide opportunities for pilot projects
- Provide funding
- Provide feedback.