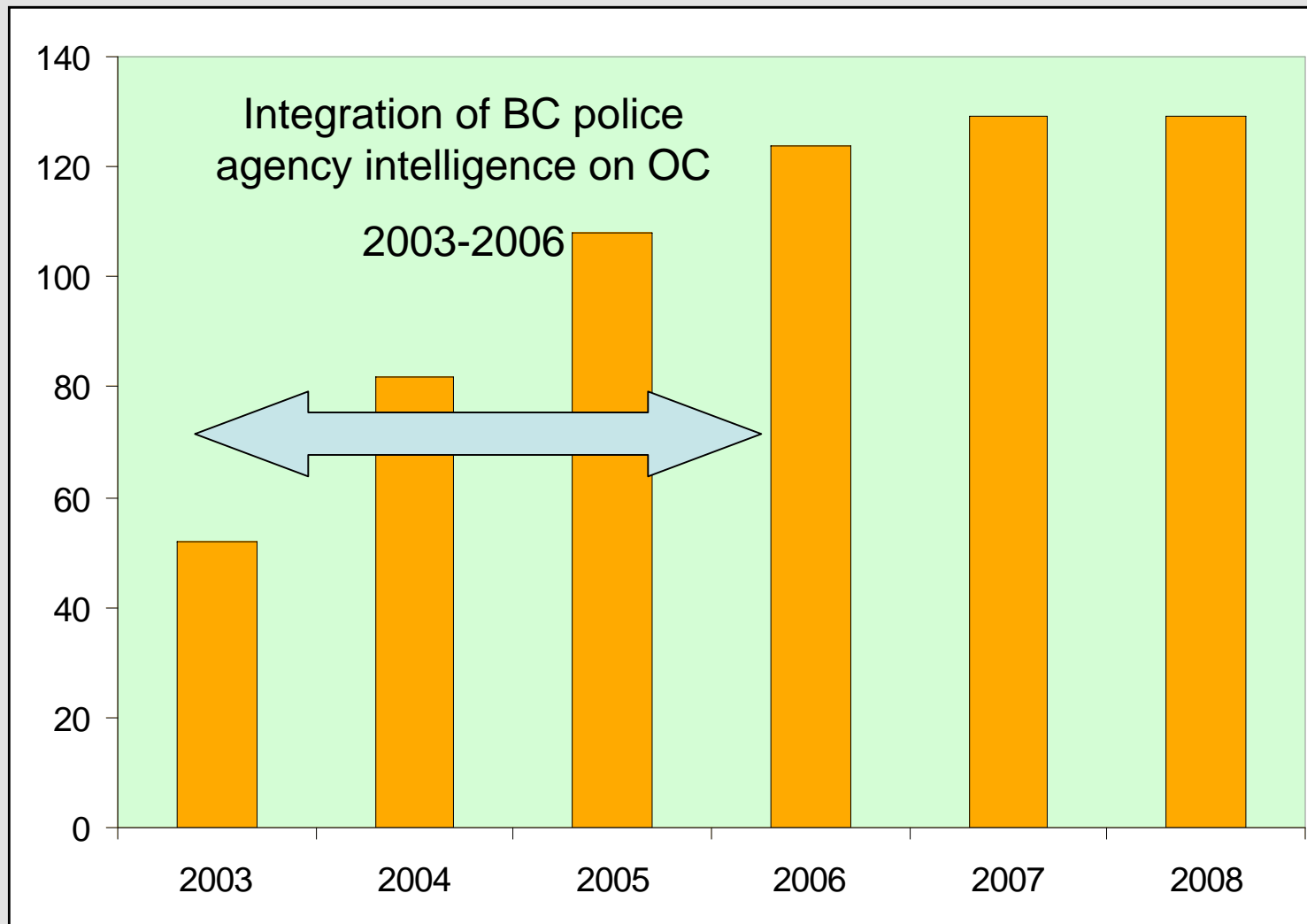




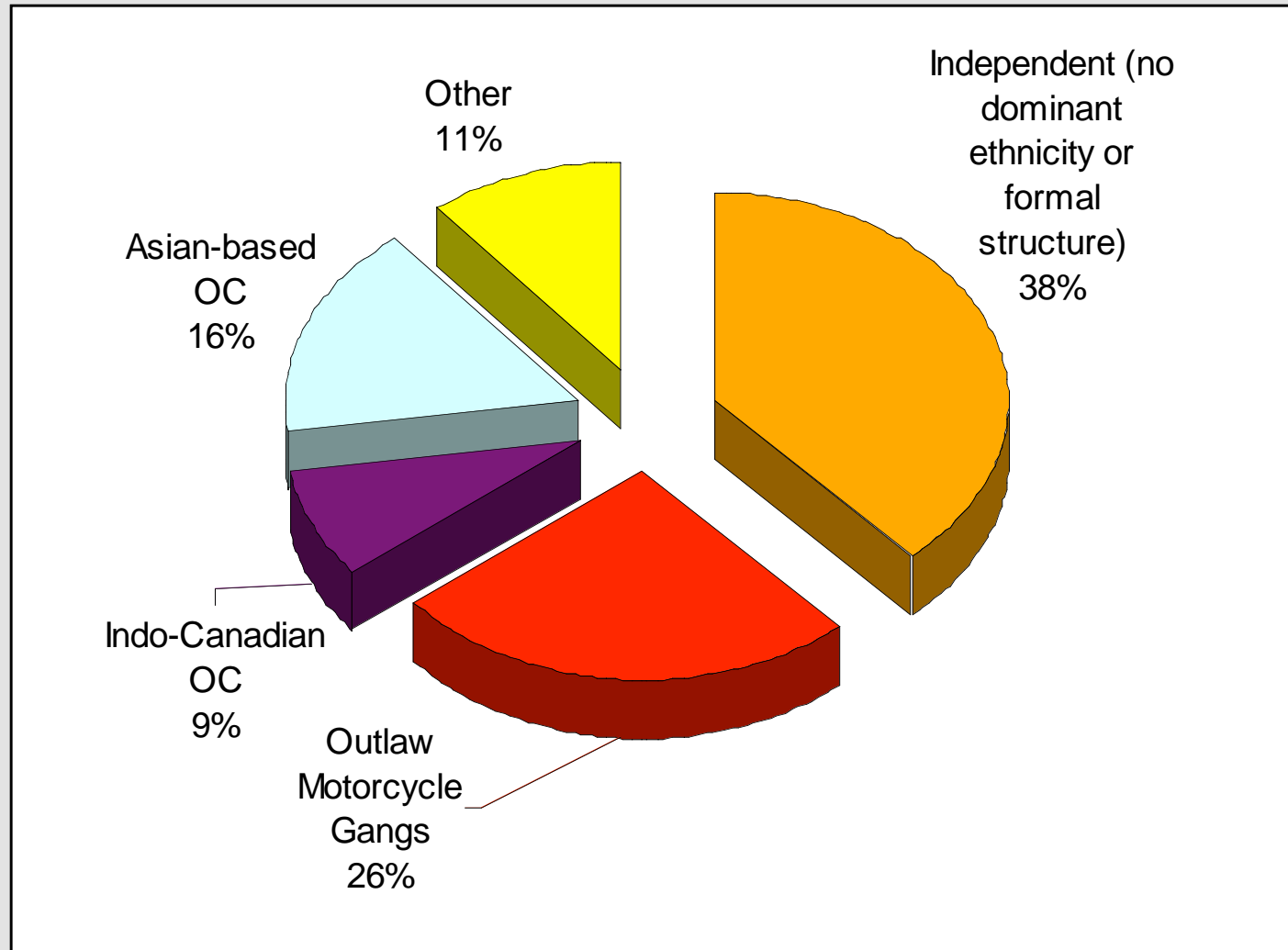
Crime in British Columbia An Overview

*Gary Bass,
Commanding Officer "E"
Division,
Deputy Commissioner
Pacific Region*

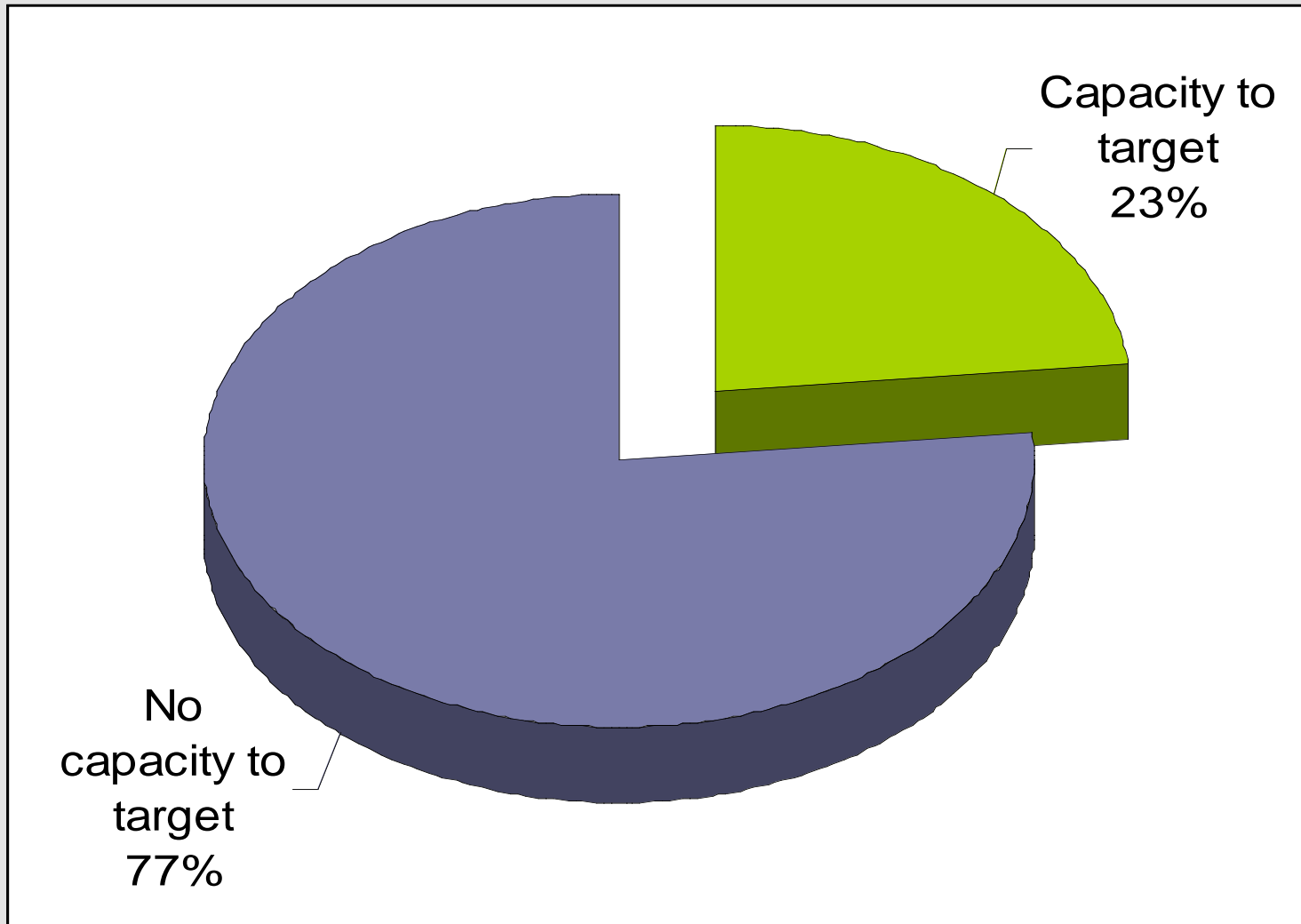
Criminal organizations known to police, BC 2003-2008: integrating intelligence reveals scope of OC



Known active organized crime groups by category, CISBC Provincial Threat Assessment, BC 2007



Necessity of strategic targeting: estimated police capacity to investigate active OC groups, 2007-08

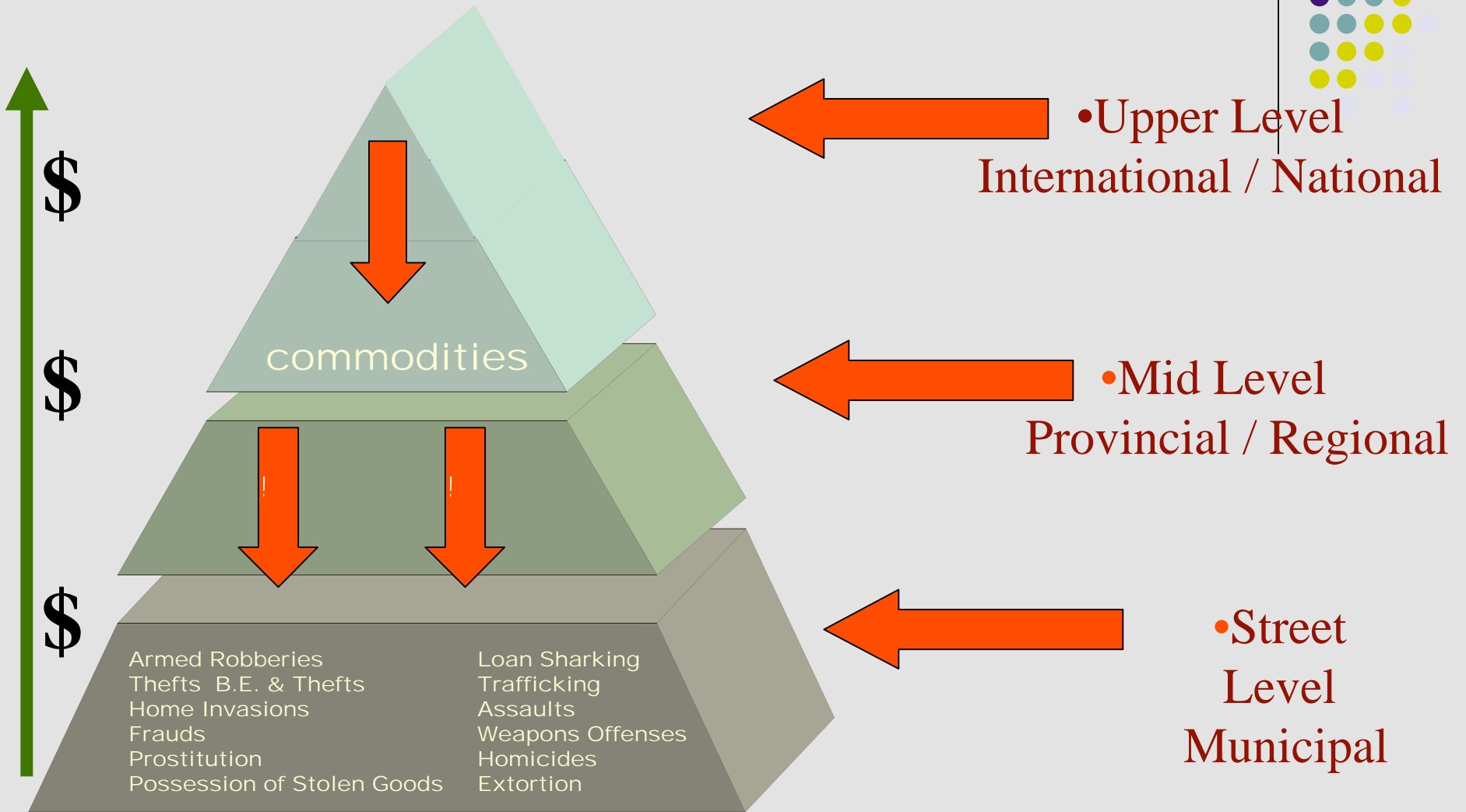




Organized crime: a dynamic challenge

- Different drug markets require distinct response from law enforcement
- Improvements in the marijuana grow situation set against new challenges in illicit synthetic drugs
 - Clandestine laboratories
 - Precursor chemicals
- Violence associated to organized crime remains a major threat

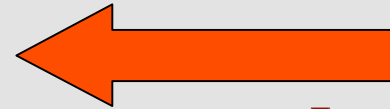
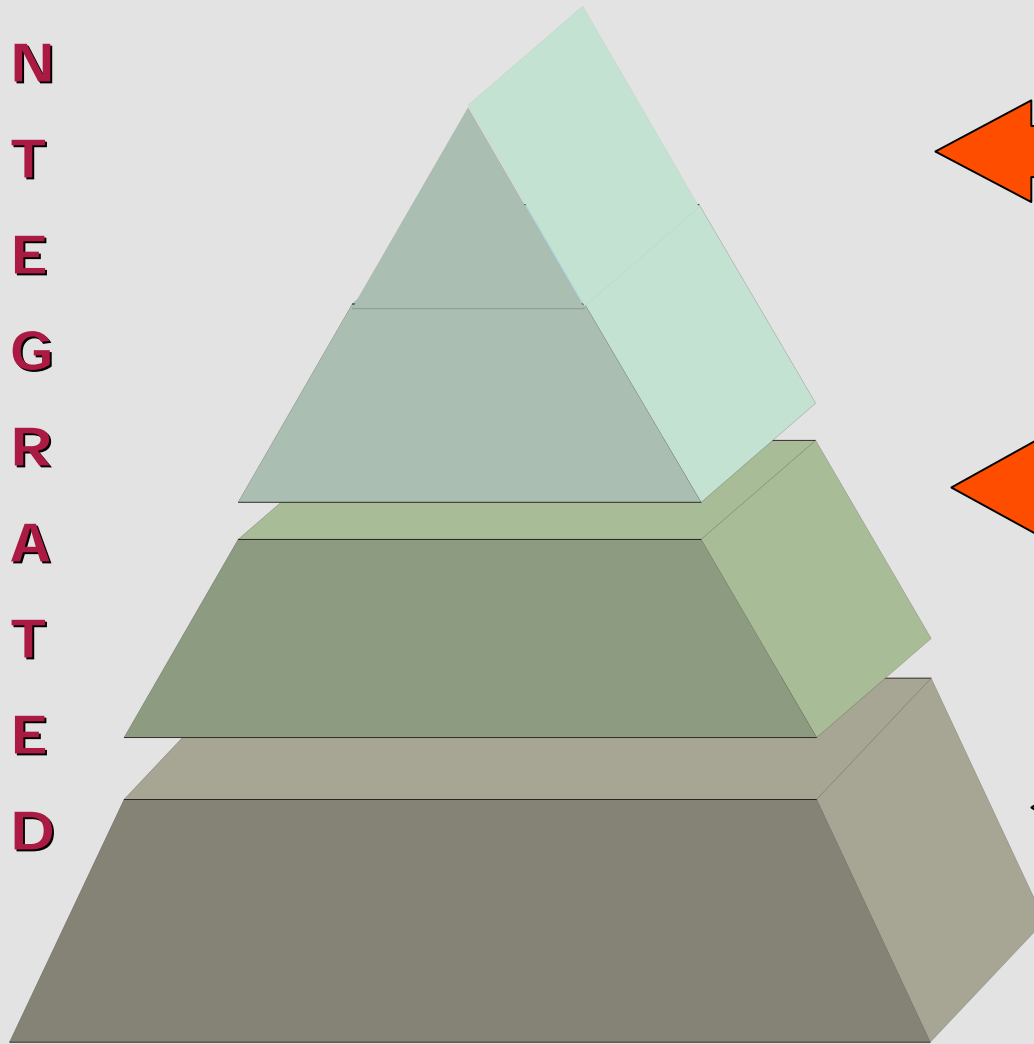
THE CONCEPT OF ORGANIZED CRIME



RCMP STRUCTURE IN THE LMD



I
N
T
E
G
R
A
T
E
D



• ***Federal***

International / National



• ***Provincial***

Mid-Level

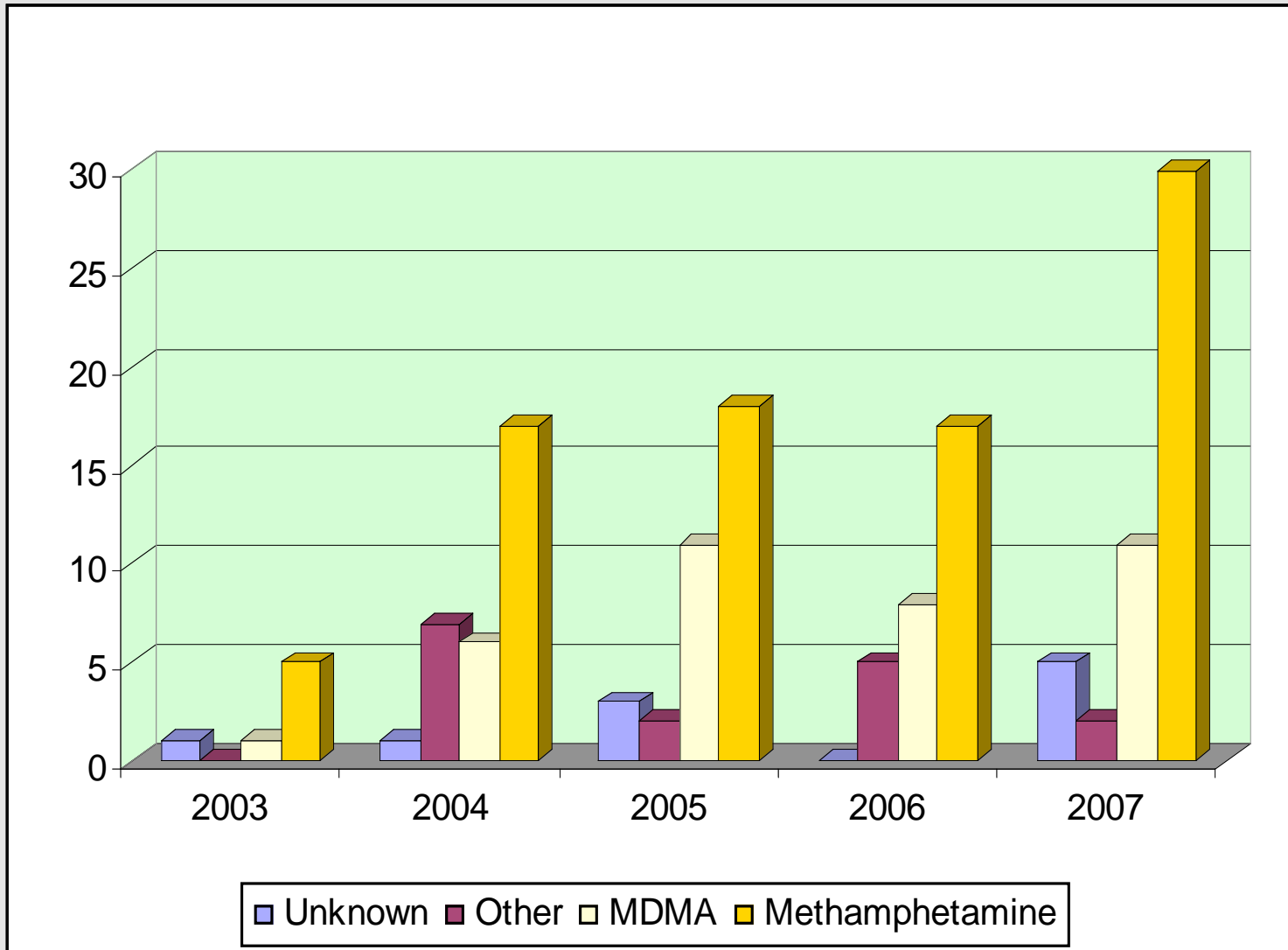


Municipal

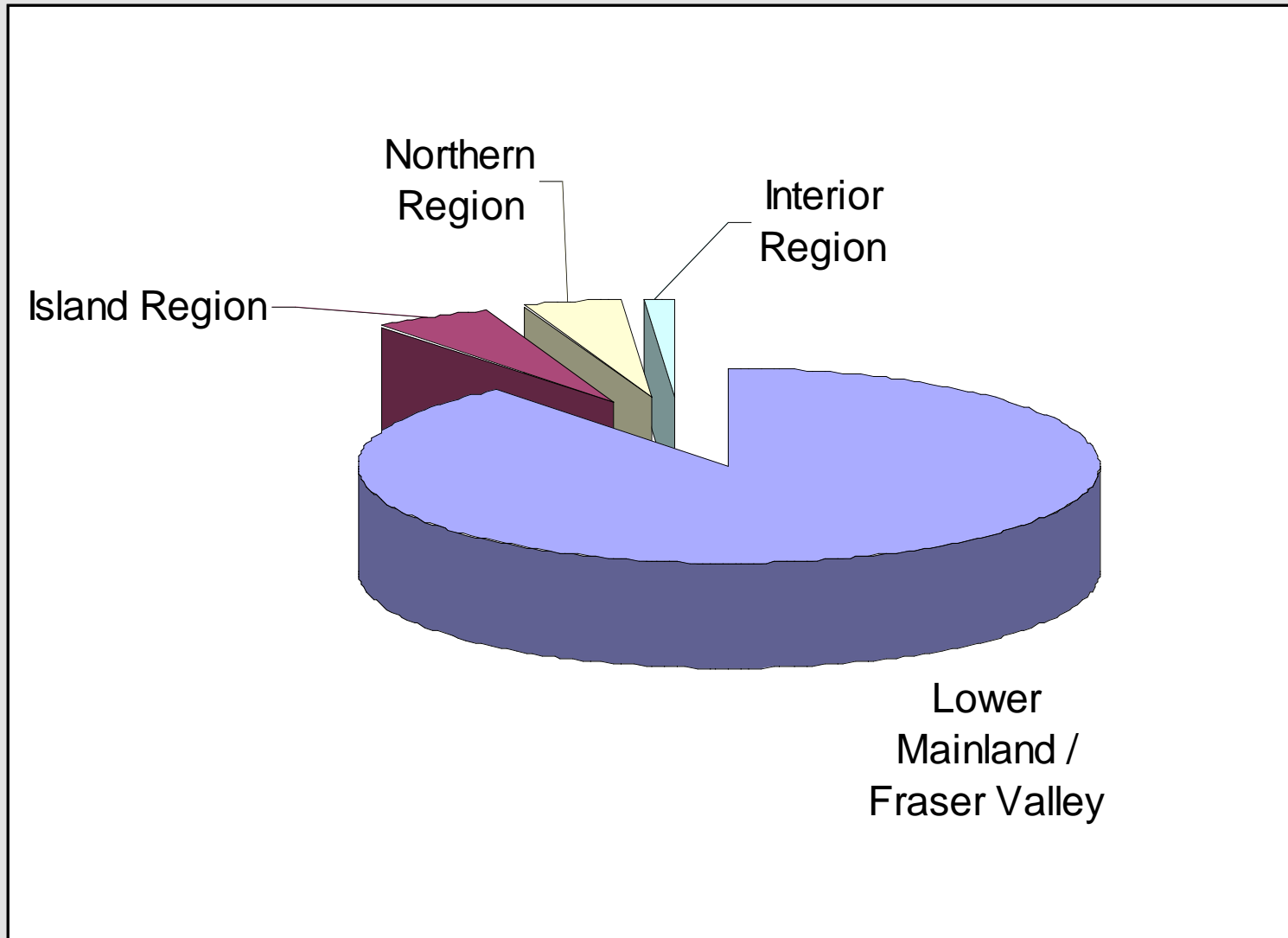
Street Level

SERVICE DELIVERY

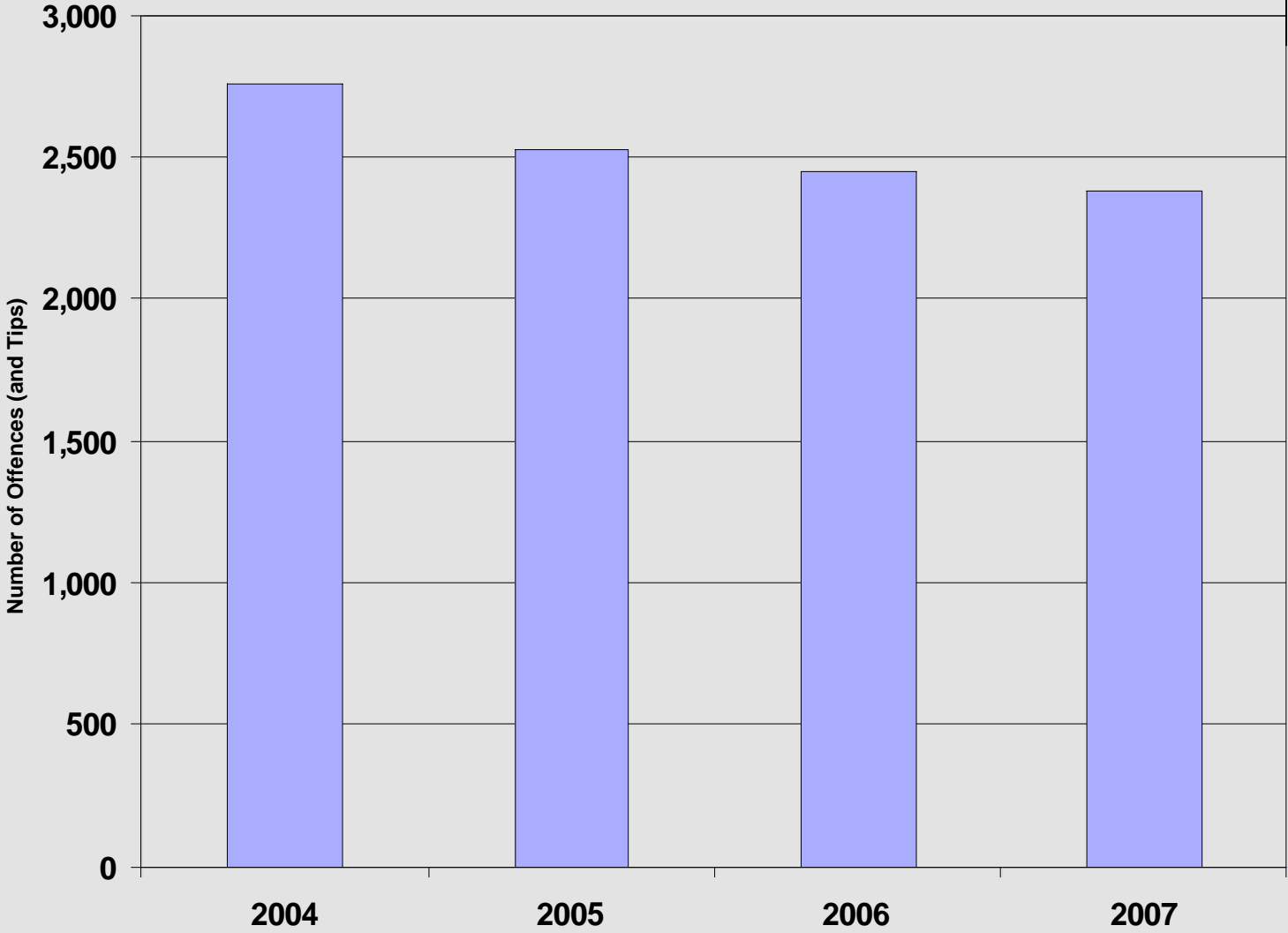
Clandestine synthetic drug labs dismantled in British Columbia



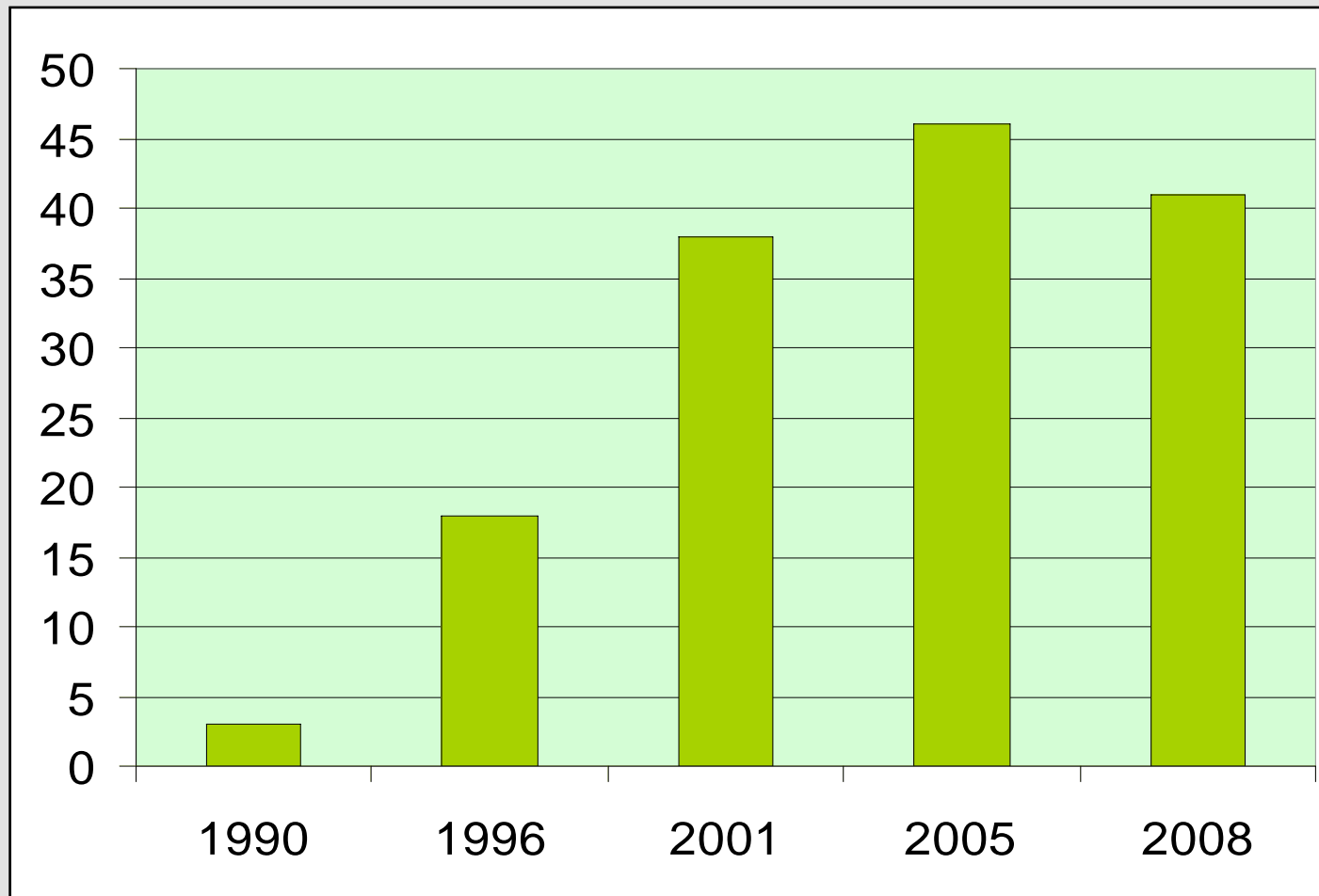
Clandestine synthetic drug labs: distribution in BC 2007



Marihuana Production Offences (Including Tips): Lower Mainland District RCMP

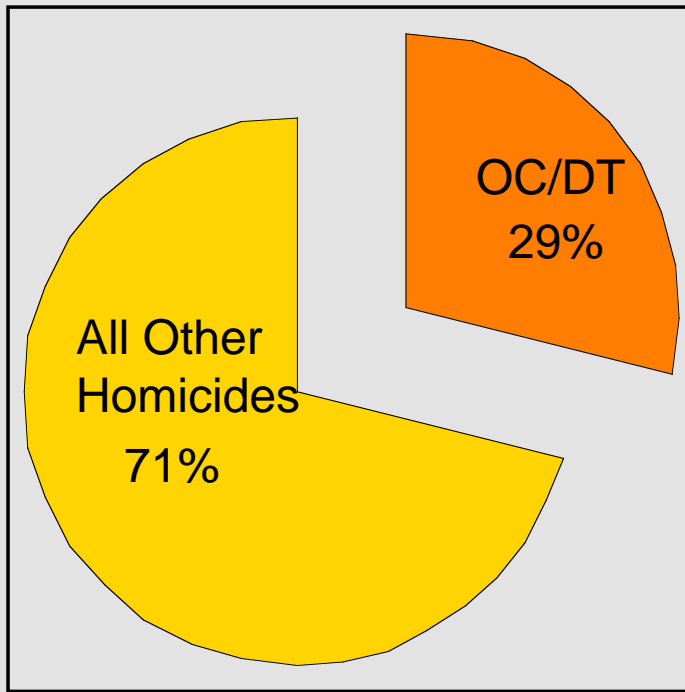


Turning tide on marihuana production? “Hydroponic supply” businesses, Lower Mainland yellow pages 1990-2008, selected years

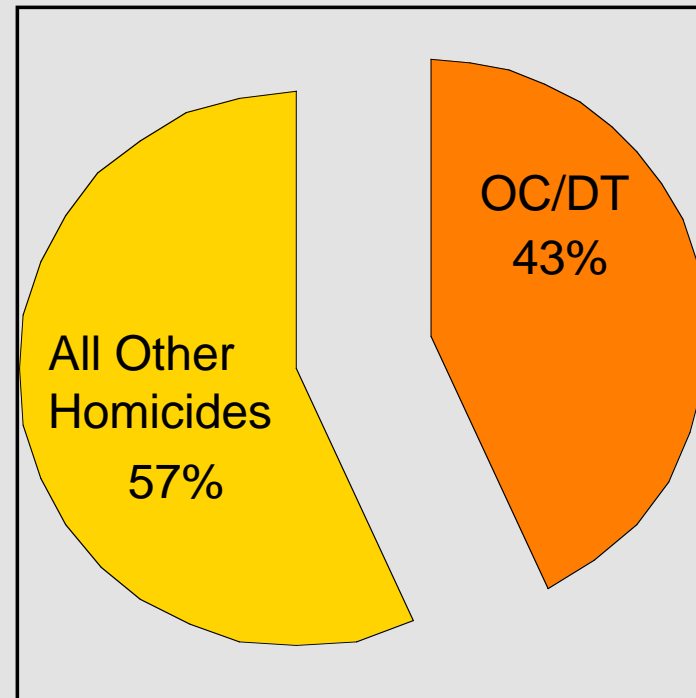


Organized crime & drug trafficking-associated homicides as percentage of total, BC 1998 & 2007

1998



2007





RCMP “E” Division Crime Reduction Initiative: performance on overall/property crime rates

Comparison of RCMP Lower Mainland District with selected Canadian jurisdictions

Data prepared by Criminal Analysis Section &
Operations Strategy Branch, RCMP “E” Division
2008-02-04



Data sources

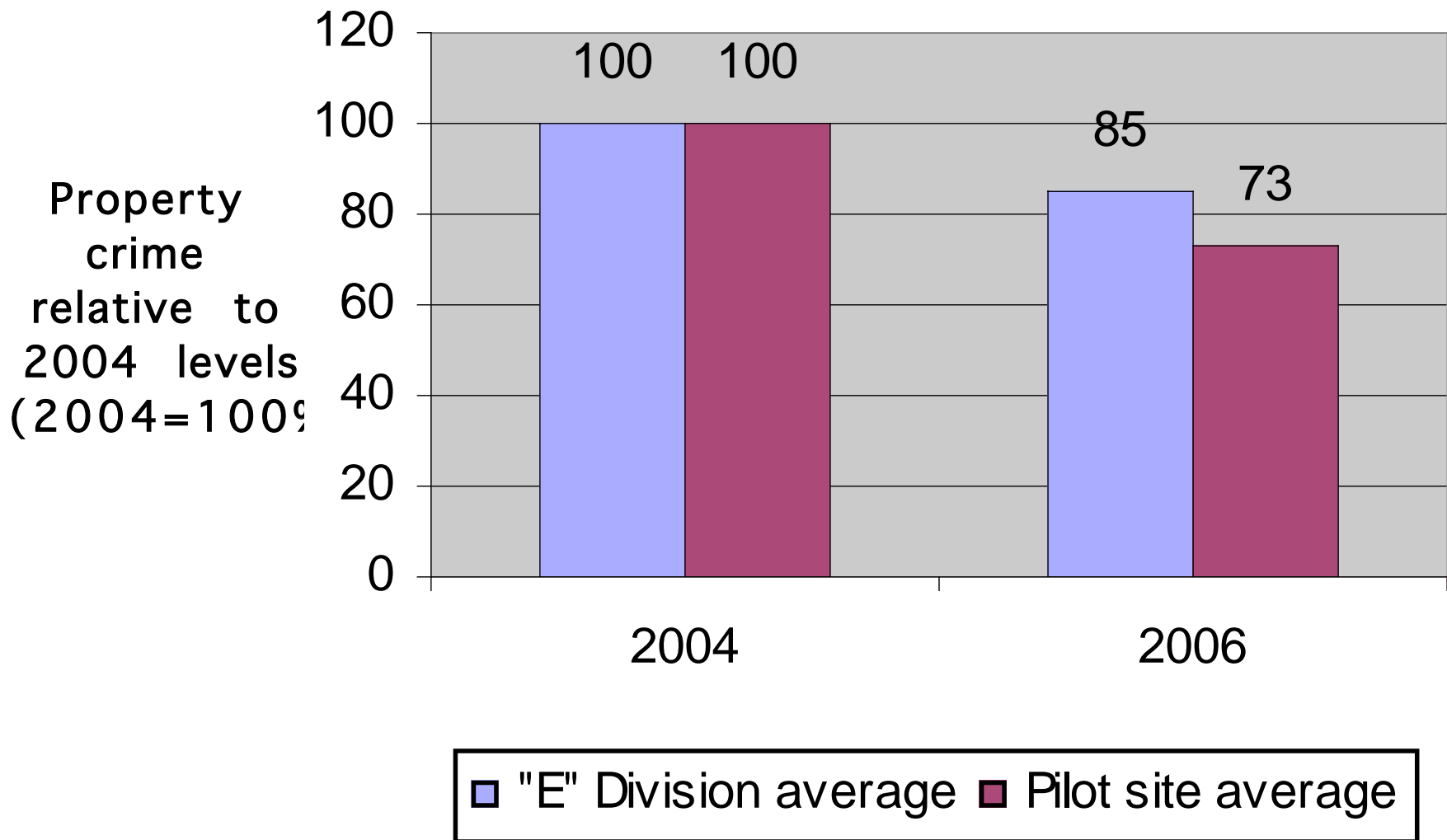
- Published crime rate data 2003-2007
- 2007 data not available in all cases
 - RCMP LMD, Vancouver, Montreal
- Data normalized to show change from prior baseline



Key findings

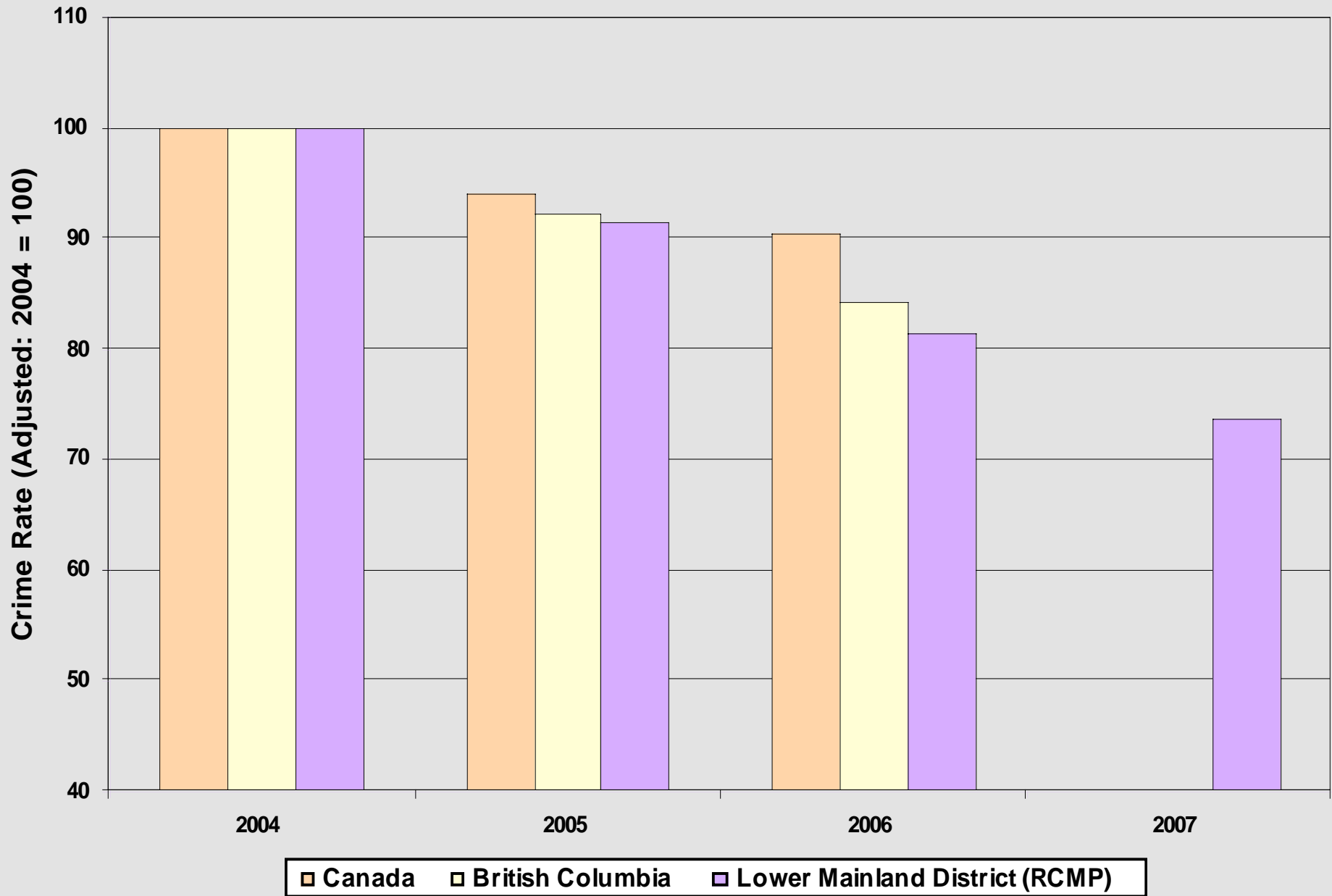
- RCMP LMD and VPD performance on property crime significantly better than national, regional, or similar-force comparisons
- Consistent with both forces' **strategic approach to prolific offending** (national best practice)

CR "pilot sites" performance on property crime 2004-2006 vs Division average

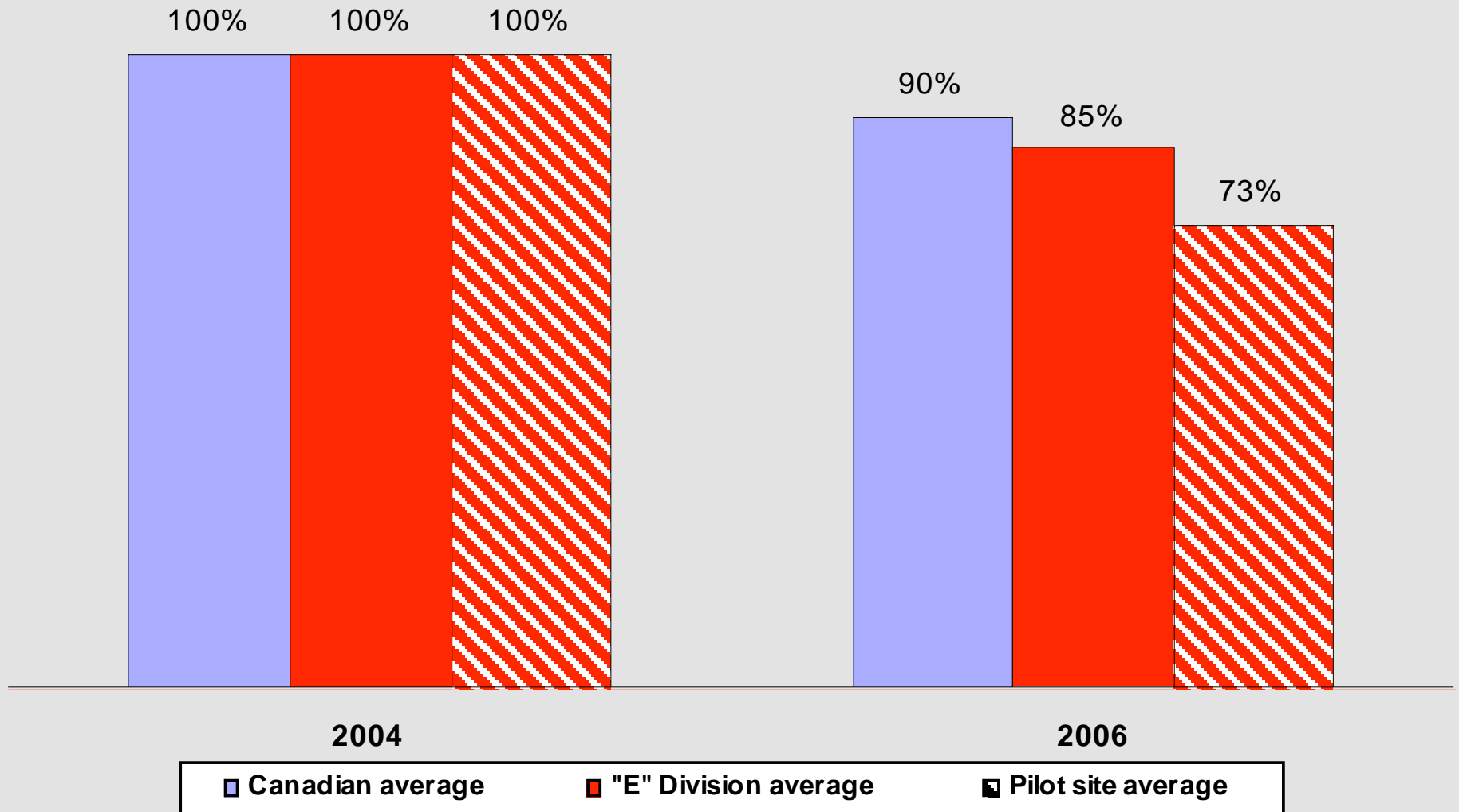


Relative Change in Offending Rates 2004-2007

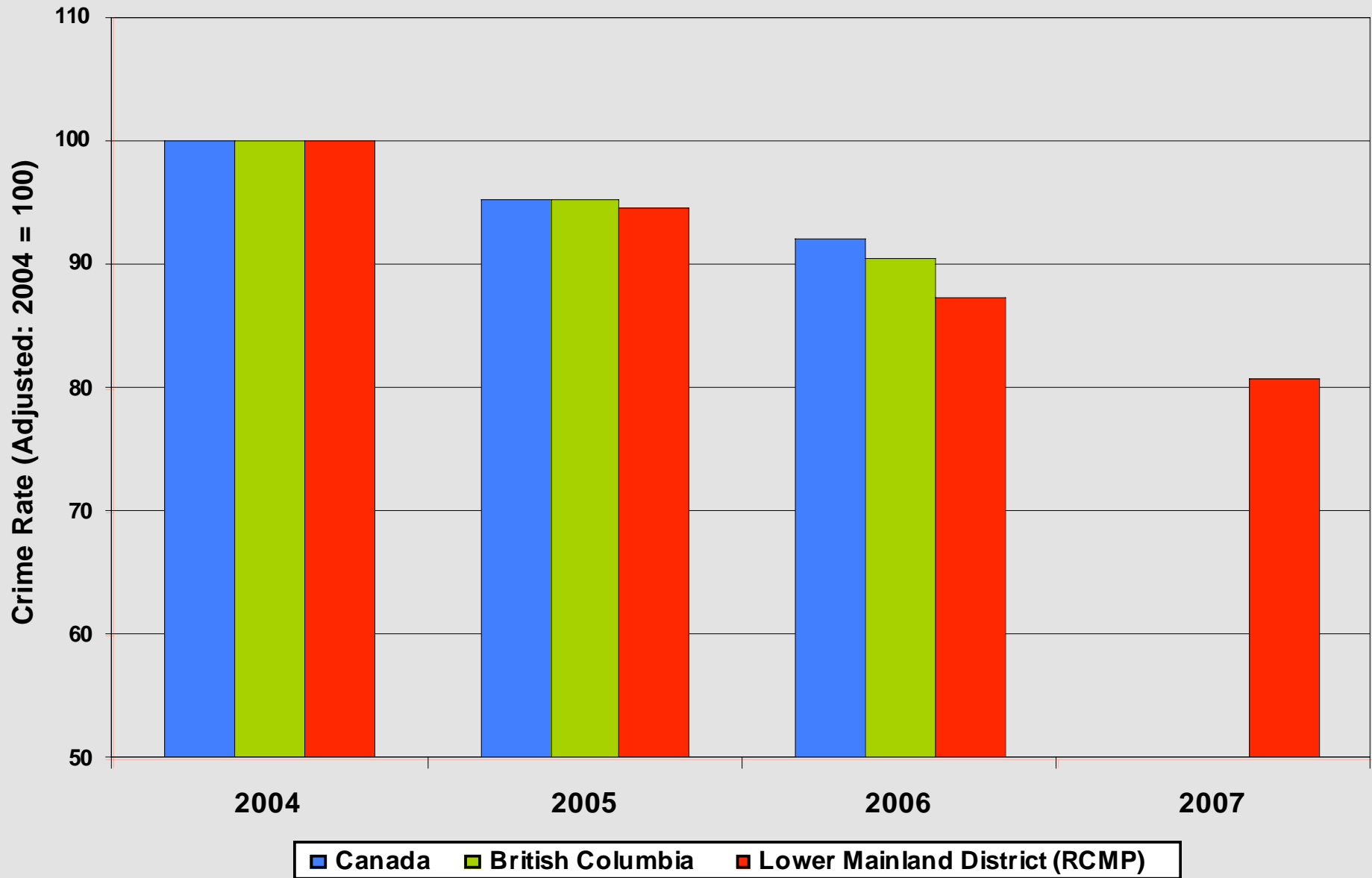
Criminal Code Property Offences



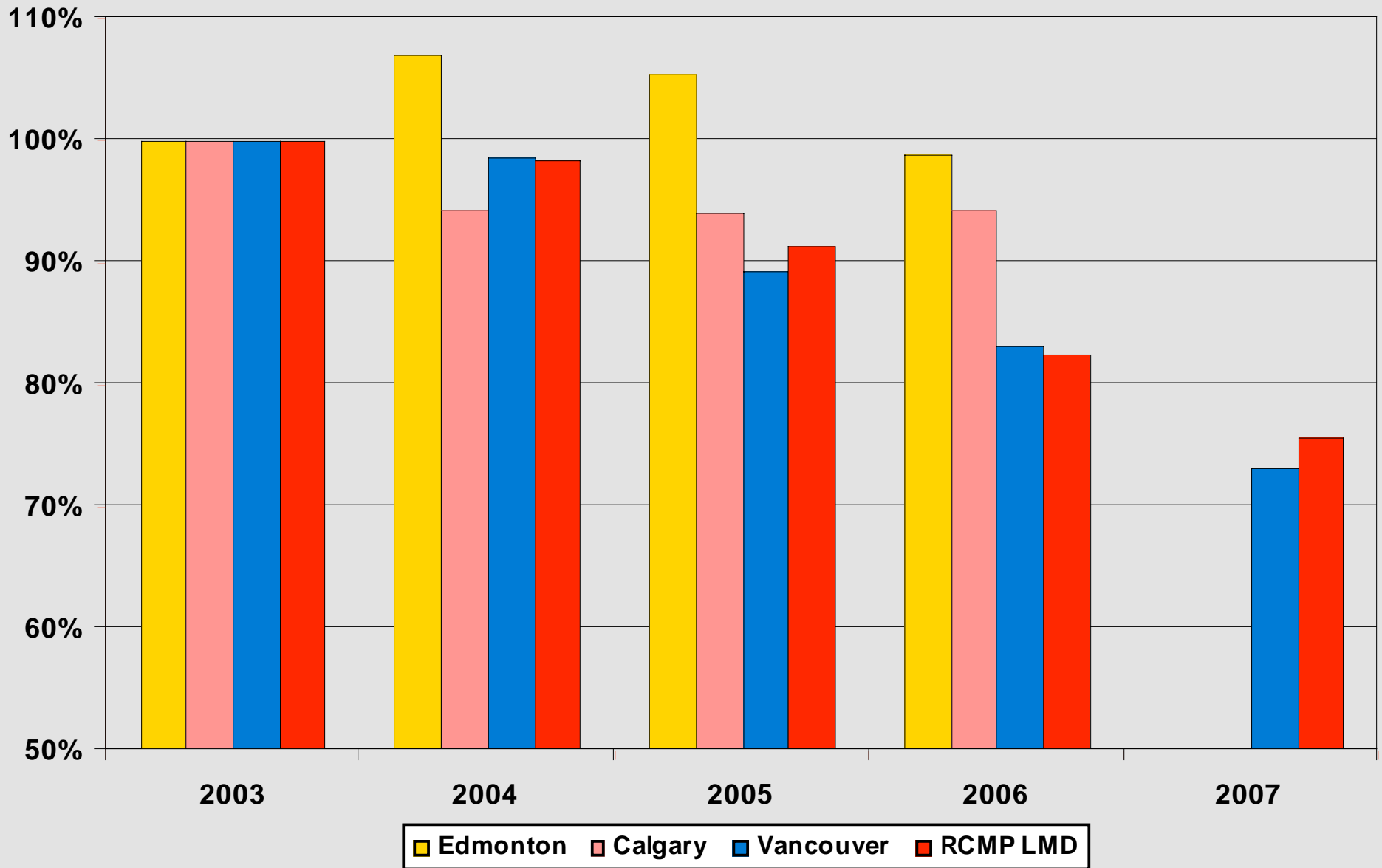
2004-2006 Crime Reduction Initiative Pilot Sites Relative performance re property crime rates (2004 = 100%)



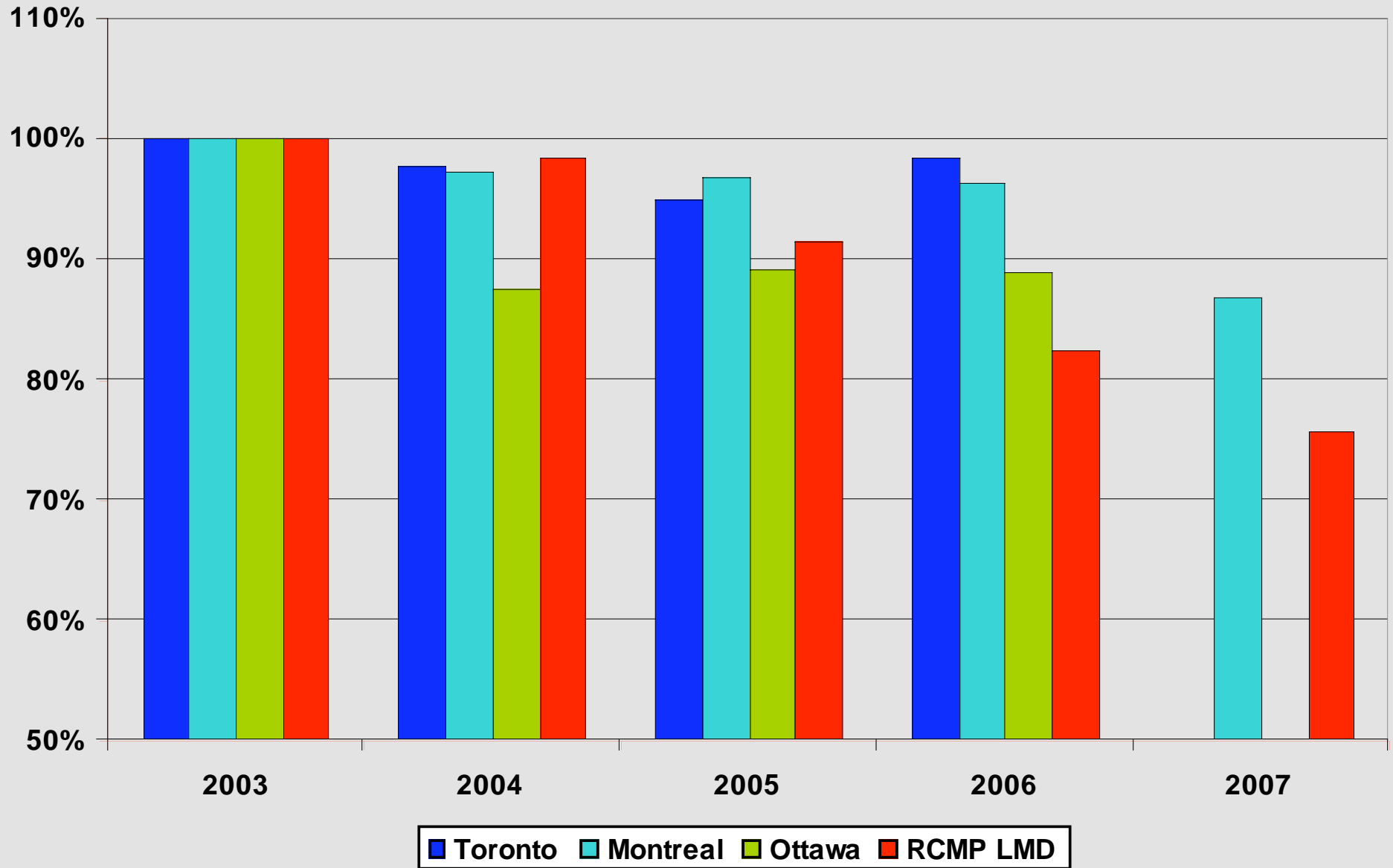
Relative Change in Offending Rates 2004-2007 Total Criminal Code Offences



Change in Property Crime rates: 2003-2007 (2003=100%)

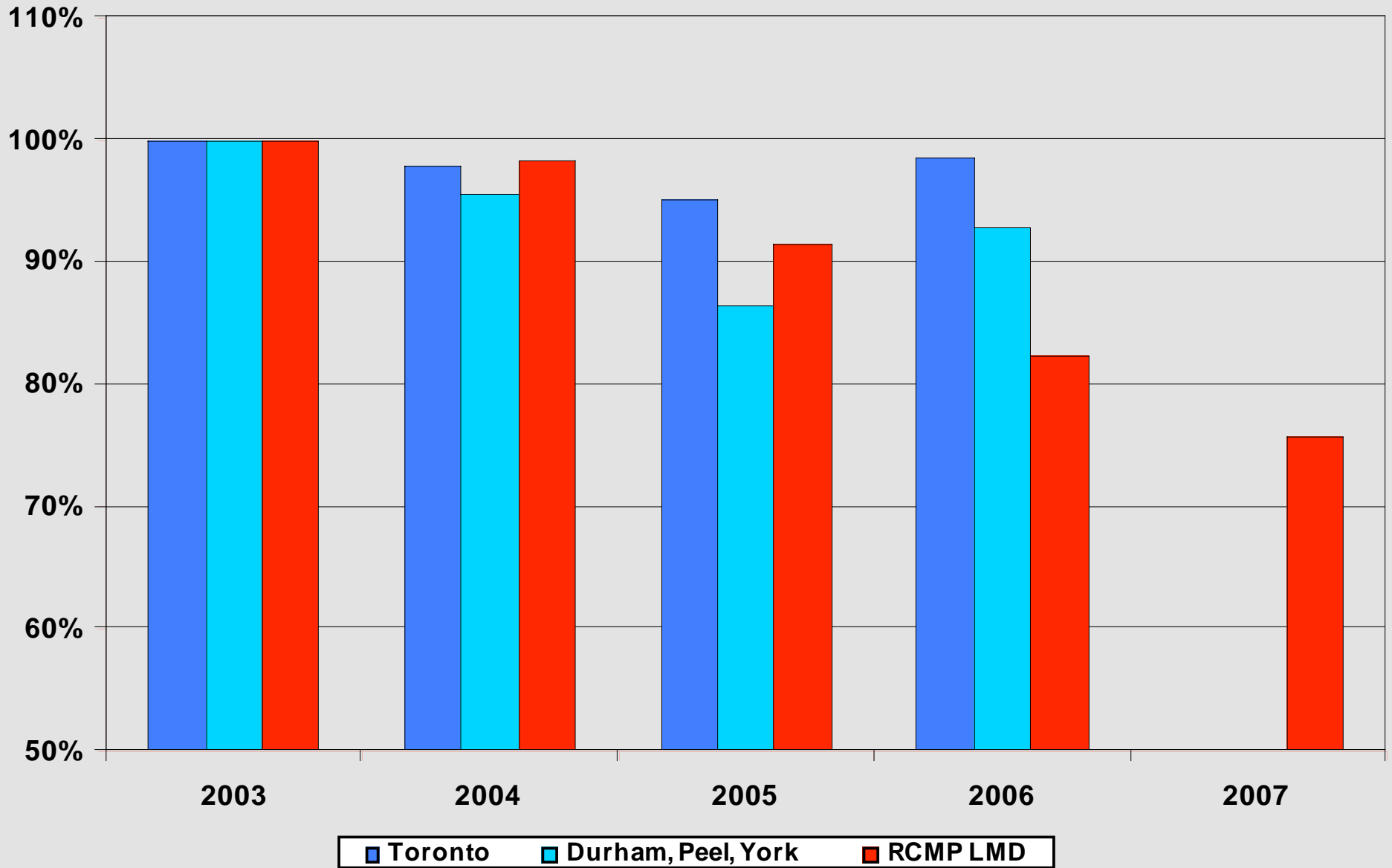


Change in Property Crime rates: 2003-2007 (2003=100%)



RCMP LMD & Toronto-area forces

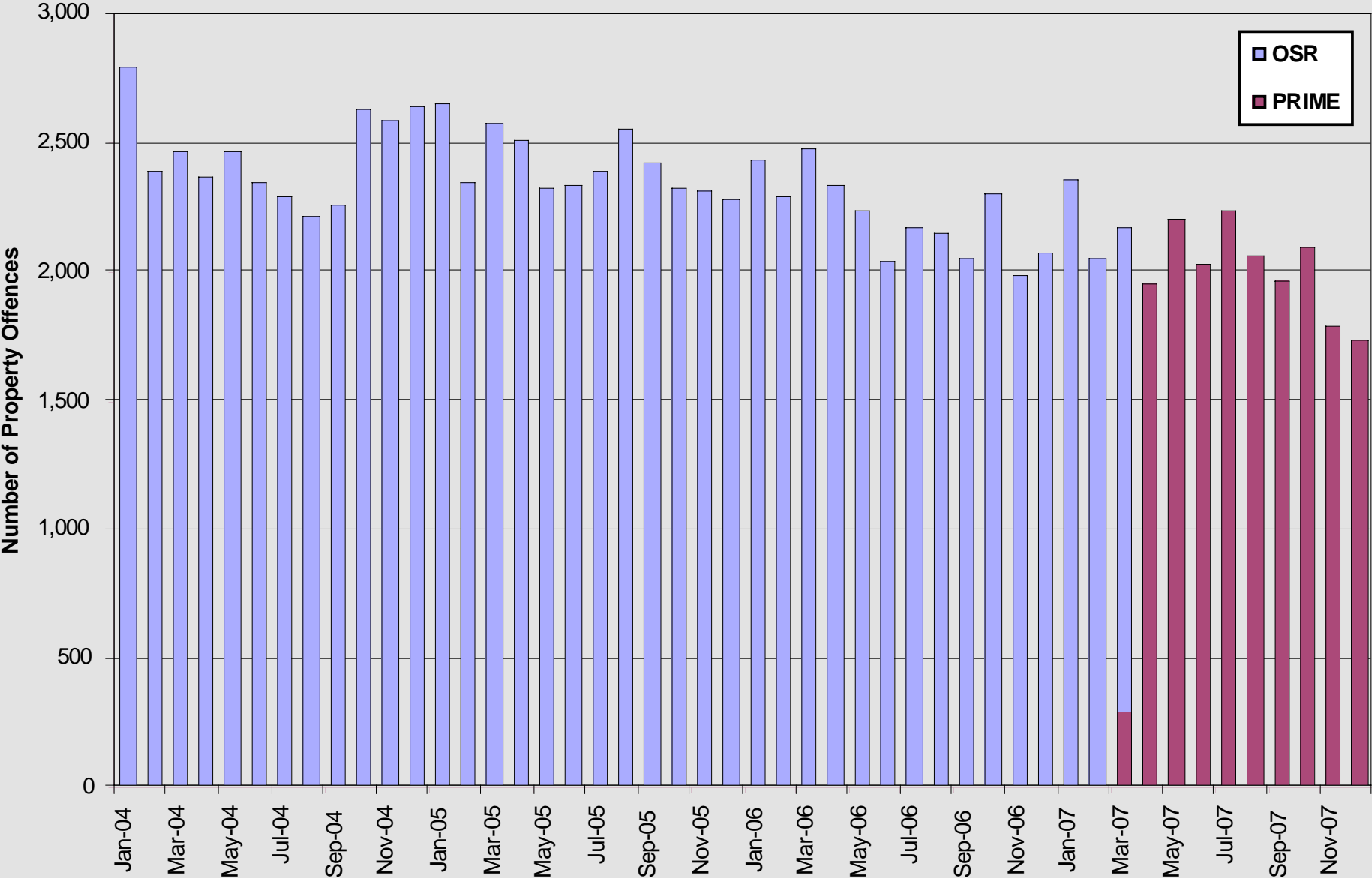
Change in property crime rates: 2003-2007 (2003=100%)



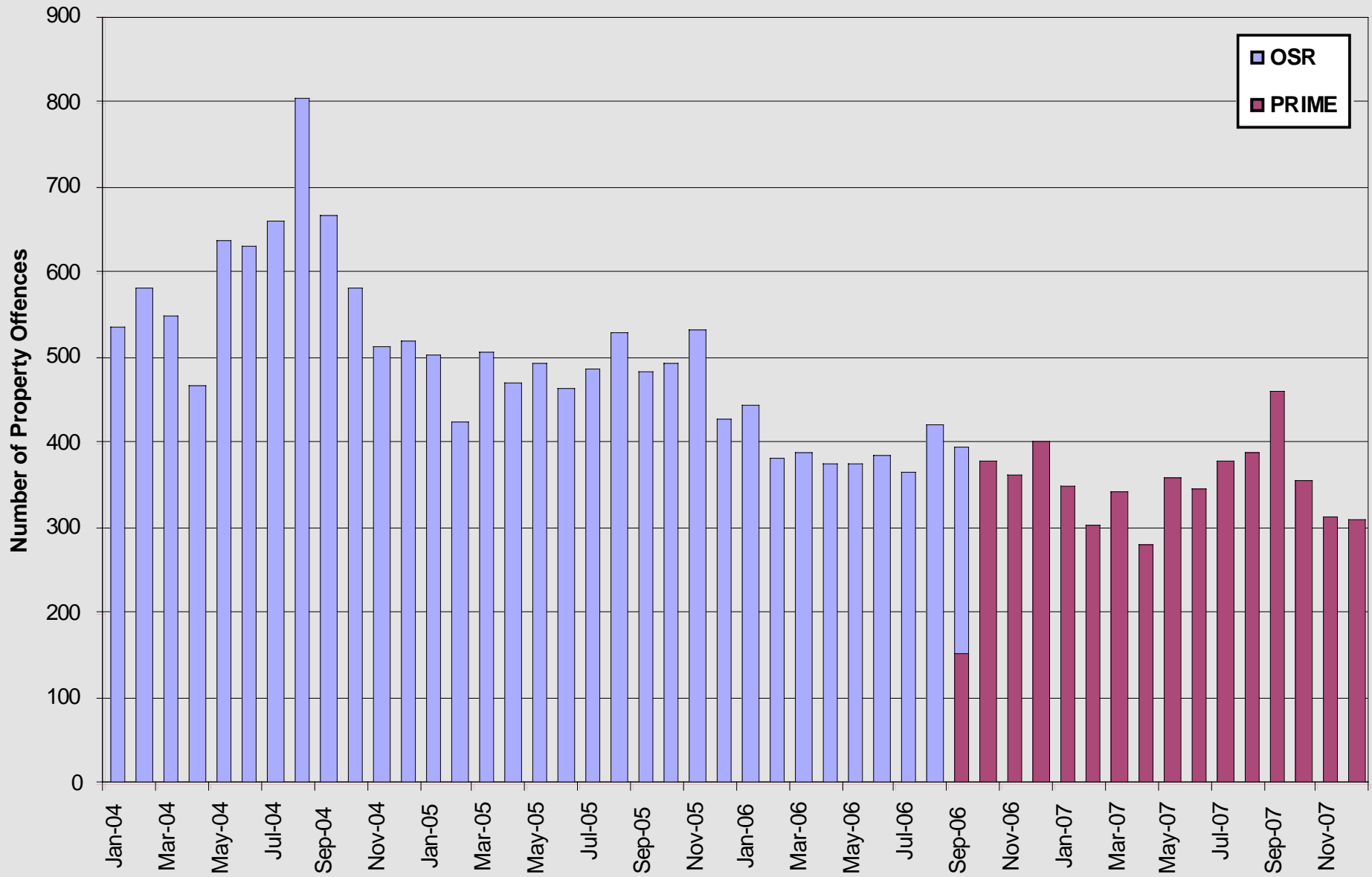
Accounting for other explanations

- RMS transition?
 - NO... there is no change in patterns of decline pre/post RMS change, detachment by detachment
- ‘Designing out’ crime?
 - NO... factoring out motor vehicle theft makes only a marginal difference to the numbers
- Demographics?
 - NO... there is an overall national decline, but LMD decline is statistically distinct

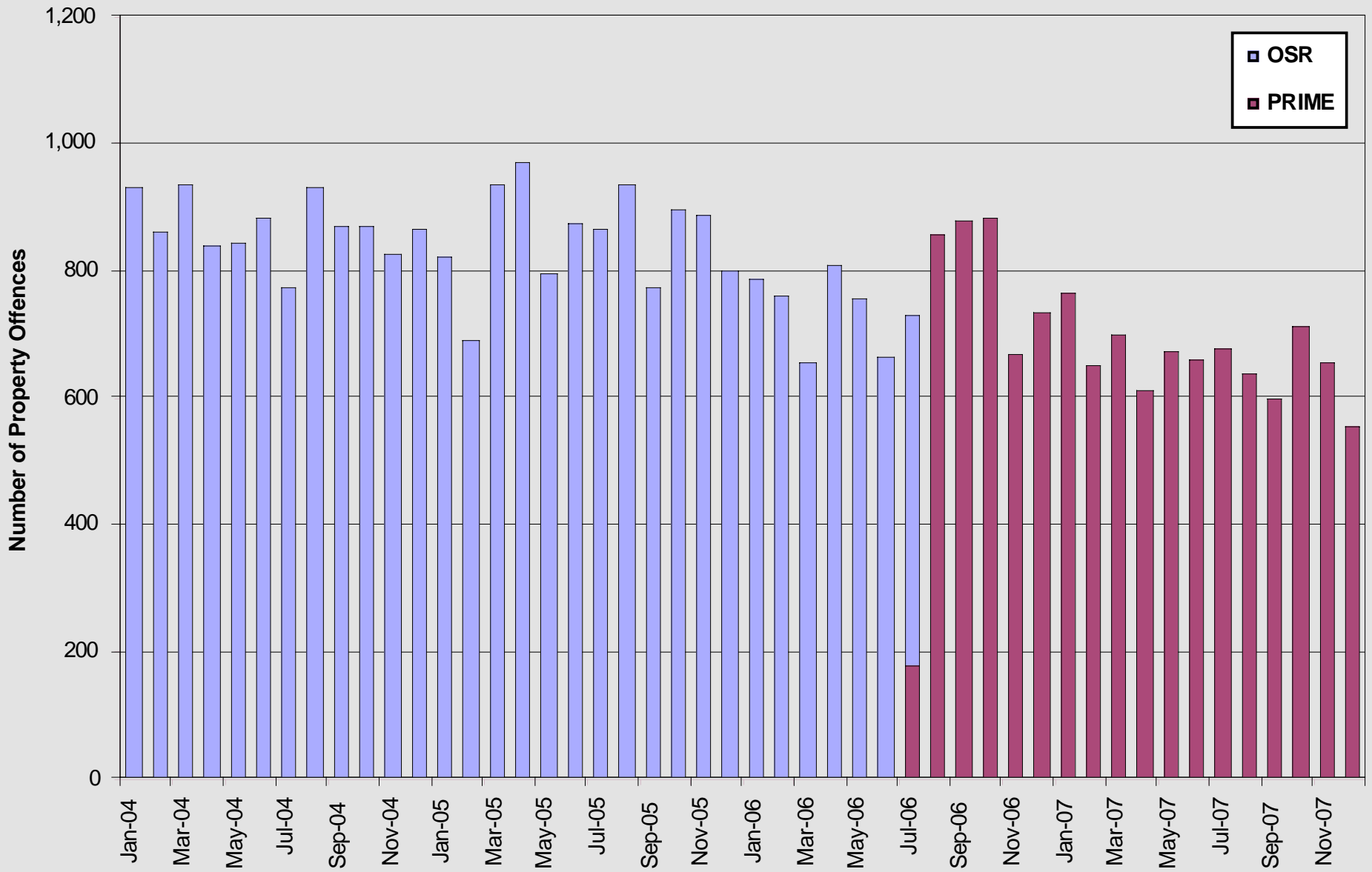
Surrey Detachment: Property Offences



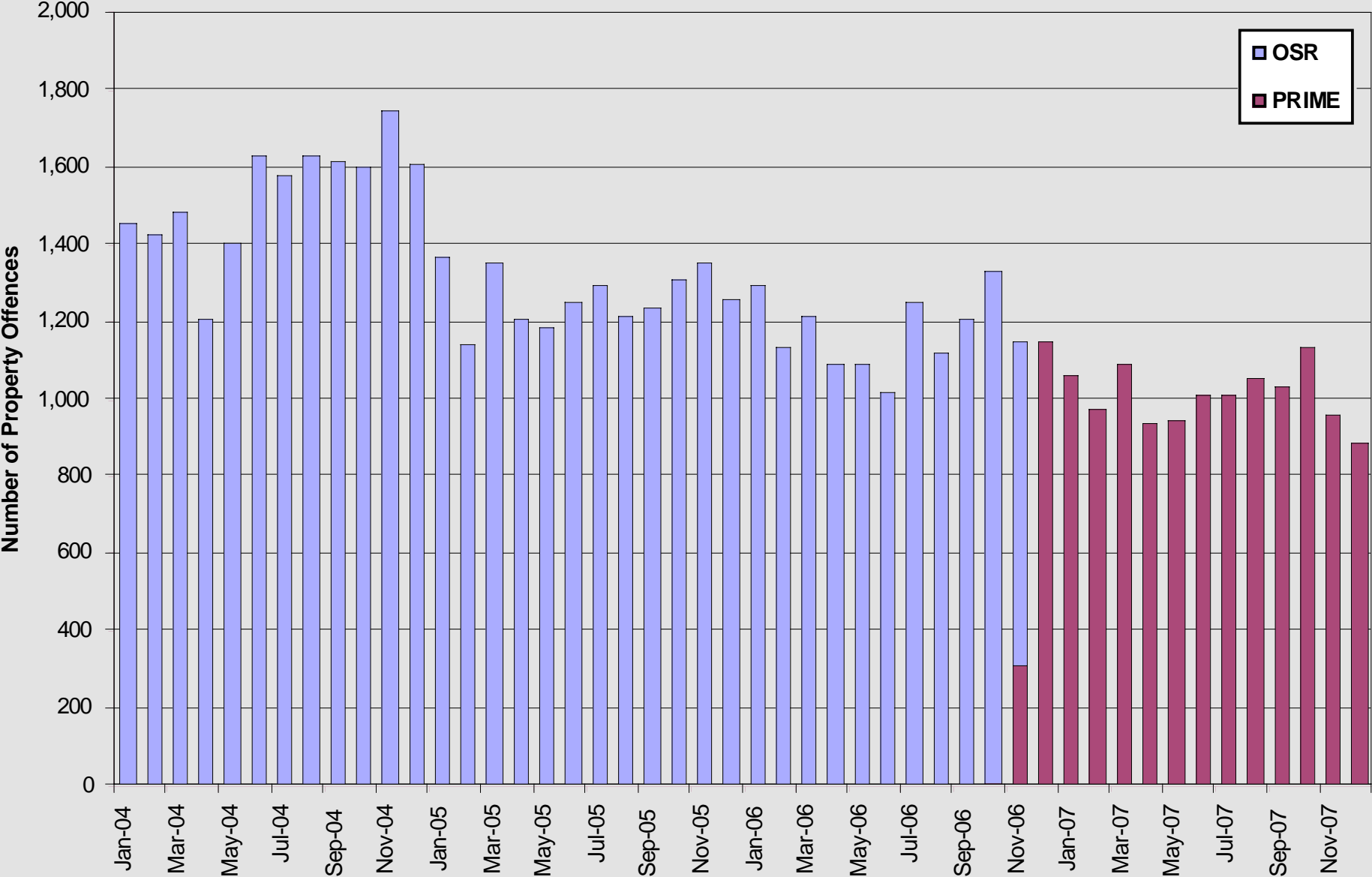
North Vancouver Detachment: Property Offences



Coquitlam Detachment: Property Offences



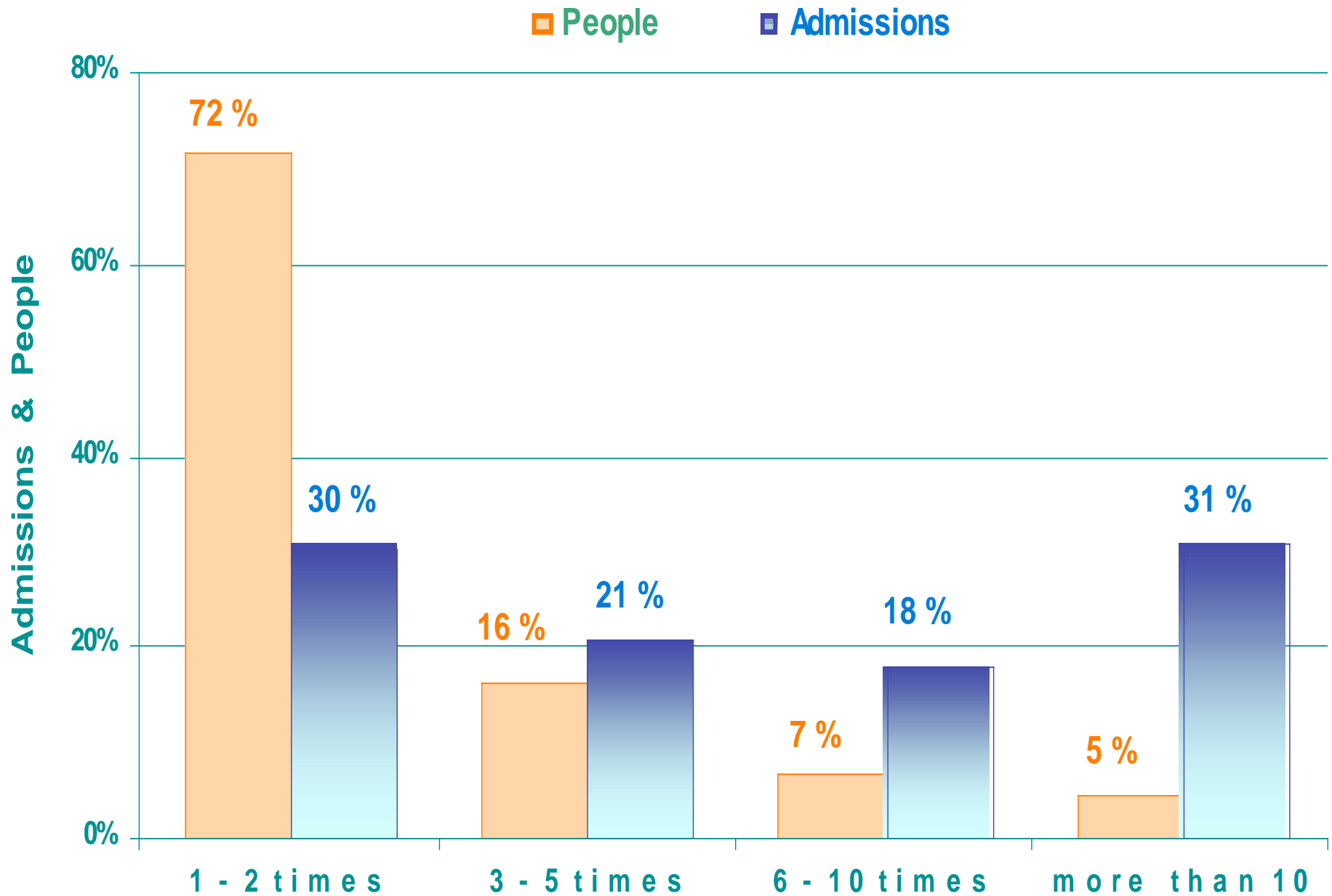
Burnaby Detachment: Property Offences



Prolific offending as an enforcement focus

- 12% of offenders create 49% of provincial corrections admissions 1975-1998 (BC Corrections data)
- Response: detachment focus on repeat offenders, comprehensive court packages, court conditions – commenced pilot sites 2004, rest of Division 2005
- 2004-2006 RCMP Crime Reduction pilot sites
 - Penticton
 - Coquitlam/Ridge Meadows
 - Courtenay/Comox
 - Fraser Lake
 - Port McNeill
- Performance on property crime ahead of all comparison jurisdictions

Recidivism Patterns 1975 - 1998

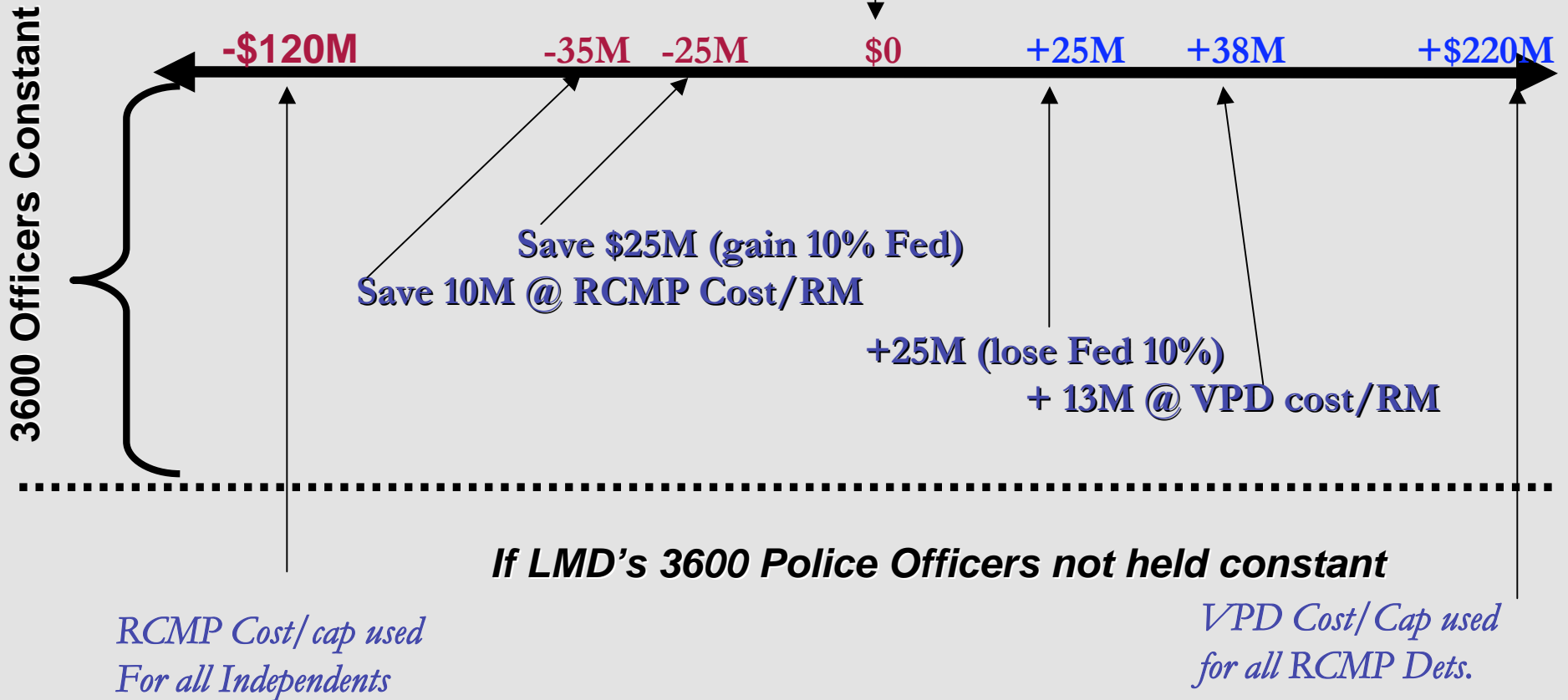


~\$530 Million LMD Policing Cost

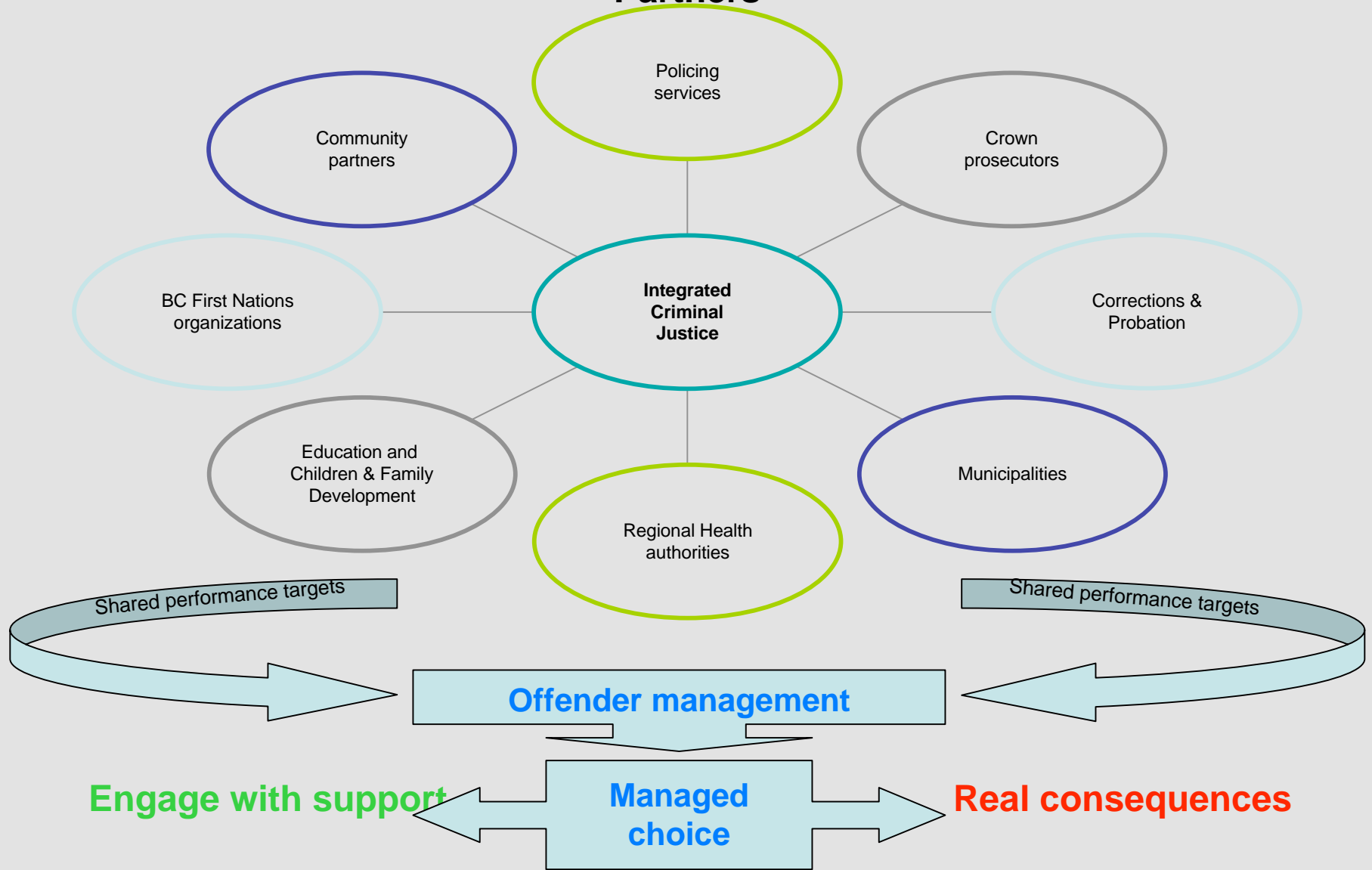
\$530M
Status Quo

RCMP Model

Independent Model



Integrated Criminal Justice and Crime Reduction in British Columbia: Key Partners



An Integrated Criminal Justice System for British Columbia

Cabinet

Provincial Community Safety Steering Committee

Criminal Justice Reform Secretariat

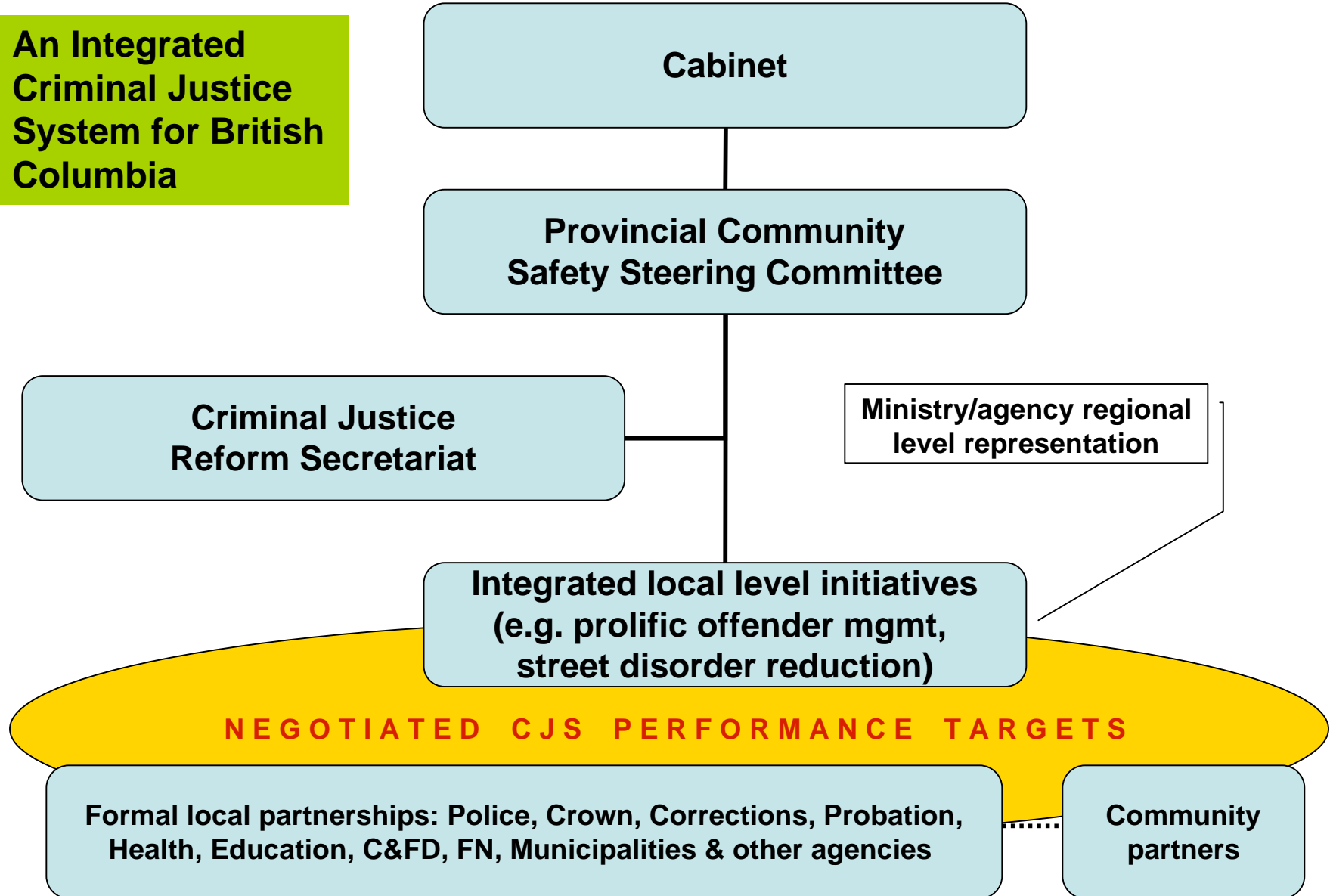
Ministry/agency regional level representation

**Integrated local level initiatives
(e.g. prolific offender mgmt,
street disorder reduction)**

NEGOTIATED CJS PERFORMANCE TARGETS

**Formal local partnerships: Police, Crown, Corrections, Probation,
Health, Education, C&FD, FN, Municipalities & other agencies**

Community partners





Questions and Discussion